



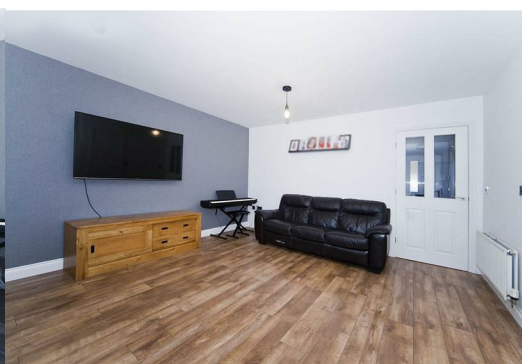
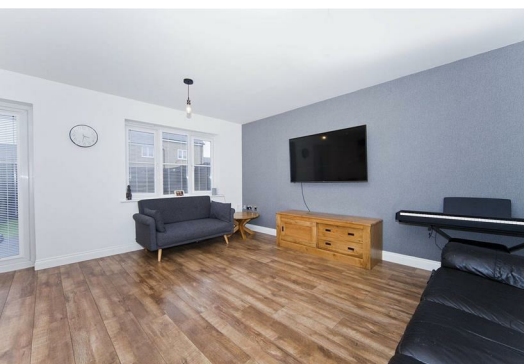
8 Bedale Close

, Hartlepool, TS25 1JH

Offers Over £138,000



Igomove are pleased to announce the listing of this modern three bedroom mid terraced property located on a small development close to all the amenities of Seaton Carew, it also provides; three well proportioned bedrooms, (master boasting en suite facilities), modern bathroom, rear aspect lounge/ diner, excellent contemporary kitchen, guest cloakroom, entrance hall, South facing rear garden, one car driveway, uPVC double glazing, gas central heating, fitted blinds, excellent decor, freehold.



Well presented frontage, lawned garden, one vehicle driveway, front door with canopy over into;

Entrance hall with turned stairs to the first floor, laminate flooring.

Guest cloakroom comprising close coupled WC and pedestal wash basin, tiled backsplash, chrome heated towel radiator, laminate flooring.

Stylish contemporary kitchen fitted with a selection of wall, base and drawer cabinets, complimentary surfaces, subway tiled backsplash, integrated oven, integrated gas hob, integrated stainless multifunction extractor, plumbing for washing machine, space for appliances, stainless sink with chrome mixer tap.

Spacious lounge/ diner with both window and French doors opening to the rear garden, fitted storage cupboard, laminate flooring, modern decor, recessed spotlights.

To the first floor landing there is a fitted storage cupboard.

Master double bedroom located to the rear with immaculate decor and access to;

En suite shower room comprising oversized shower enclosure, close coupled WC and pedestal wash basin, chrome heated towel radiator, complimentary tiling, feature mirrored wall.

Bedroom two is of double proportions with fitted wardrobes and is situated to the front of the property, pretty decor.

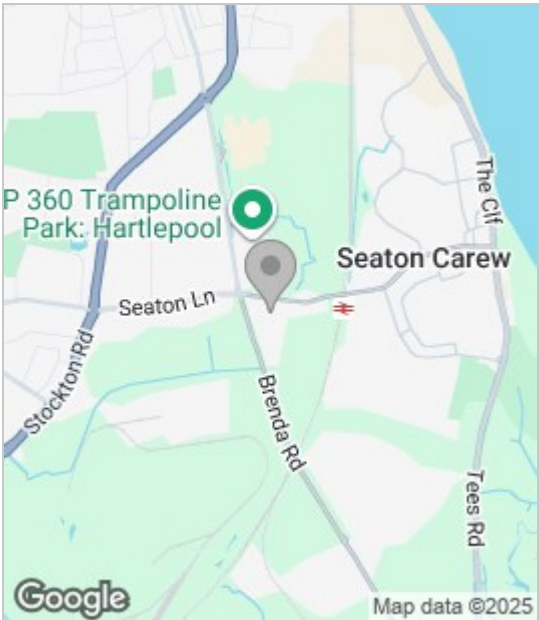
Bedroom three has a rear elevation window and is of single proportions with pristine decor.

The pristine family bathroom comprises bath with shower head tap, close coupled WC and pedestal wash basin, complimentary tiling, stylish decor.

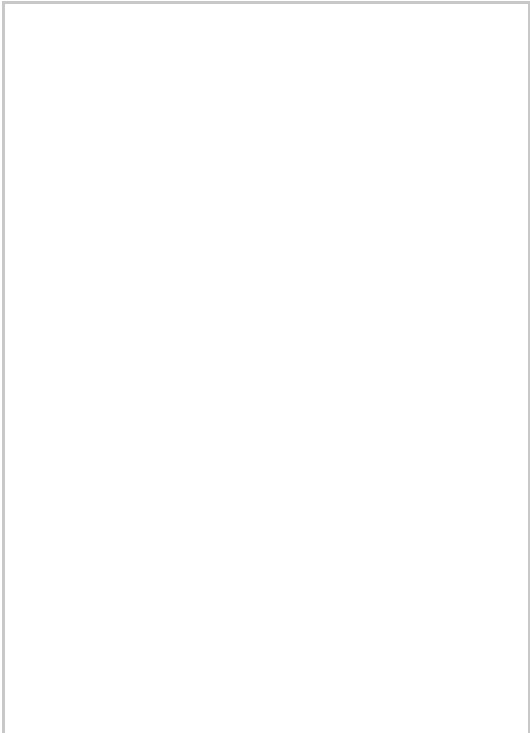
To the rear is an enclosed easy maintenance South facing artificial turf garden with decking area and garden shed.

This modern home on a small development can be viewed by contacting the Igomove team at your earliest convenience.

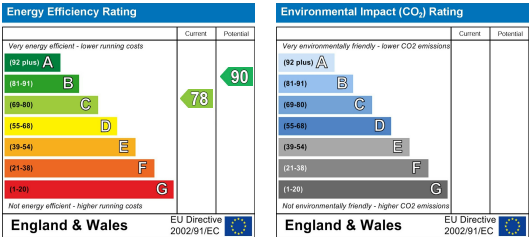
Area Map



Floor Plan



Energy Efficiency Graph



These particulars, whilst believed to be accurate are set out as a general outline only for guidance and do not constitute any part of an offer or contract. Intending purchasers should not rely on them as statements of representation of fact, but must satisfy themselves by inspection or otherwise as to their accuracy. No person in this firm's employment has the authority to make or give any representation or warranty in respect of the property.