



£1,199,995

Greenvale Road, Eltham, SE9 1PQ

Chattertons

EST 1893

This is a picture perfect Corbett house with the all important instant kerb appeal. The house is approached by a beautiful frontage with geometric tiled floor leading to the grand front door. The property has been extended to the rear and into the loft and now offers fantastic family space. The heart of the house is the open plan kitchen diner with bi folds and lantern roof, the rest of the accommodation includes formal lounge with log burner, 5 bedrooms, 2 bathrooms, ground floor cloakroom and utility room. The house features the lovely high ceilings, double glazed sash windows with shutters and column radiators and is stripped back to the stunning bricks. Located close by to great local shops and also very close by to the vast open space of Eltham park and Eltham mainline station which goes direct to London Bridge and Victoria. Right on the doorstep are a great selection of excellent schools. The property is offered to the market chain free.



Picture perfect house
Instant kerb appeal
Extended kitchen diner with lantern roof
Bi fold doors
5 bedrooms and 2 bathrooms

Beautiful frontage

Beautiful green space to the front with brick built wall with wrought iron railings, geometric tiled floor

Entrance hall

Geometric tiled floor, under stairs storage cupboard

Lounge 16' 11" x 14' 10" (5.15m x 4.52m)

Double glazed bay sash window with shutters, log burning stove with fireplace, column radiator, stripped floor boards

Kitchen diner 24' 1" x 23' 3" (7.34m x 7.08m)

Fully fitted wall and base units with granite work surface, inset sink unit with 1.5 bowl and mixer taps, integrated dishwasher, integrated microwave, mercury range cooker with extractor hood, island with granite work surface, integrated wine cooler, bi folding doors to the rear, lantern roof, 2 column radiators, tiled floor

Utility room 6' 7" x 6' 3" (2.01m x 1.90m)

Double glazed window and door to the garden, cupboard housing combi boiler, plumbing for washing machine, tiled floors

Ground floor cloakroom

High level flush wc, wall hung wash hand basin, column radiator, tiled floor

Stairs to the first floor

Carpet runner

Bedroom 2 14' 6" x 13' 5" (4.42m x 4.09m)

Double glazed bay sash window with shutters, column radiator, carpet

Double glazed sash windows
Shutters
Formal lounge with log burner
Utility and ground floor cloakroom
Chain free

Bedroom 3 13' 7" x 9' 11" (4.14m x 3.02m)

Double glazed window with shutters, column radiator, carpet

Bedroom 4 10' 4" x 7' 11" (3.15m x 2.41m)

Double glazed window with shutters, column radiator, carpet

Bedroom 5 9' 5" x 8' 8" (2.87m x 2.64m)

Double glazed window, with shutters, column radiator, carpet

Shower room

Frosted double glazed sash window with shutters, walk in shower, wash hand basin with mixer taps and vanity below, high level flush wc, tiled walls and floor, chrome heated towel rail

Stairs to the top floor

Skylight window, carpet

Bedroom 1 17' 8" x 17' 1" (5.38m x 5.20m)

2 double glazed sash windows with shutters to the rear, 2 skylight windows to the front, eaves storage, stripped floorboards, column radiator

En suite 8' 6" x 7' 10" (2.59m x 2.39m)

Frosted double glazed sash window, free standing bath with mixer taps and shower attachment, low level wc, pedestal wash hand basin, metro tiled walls and stripped floorboards

Rear garden 60' 8" x 28' 3" (18.48m x 8.60m)

Patio area and lawn, side access

Summer house 12' 0" x 9' 2" (3.65m x 2.79m)

Plus extra storage





Greenvale Road, London, SE9

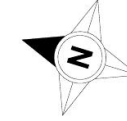
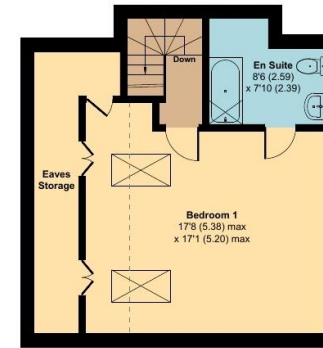
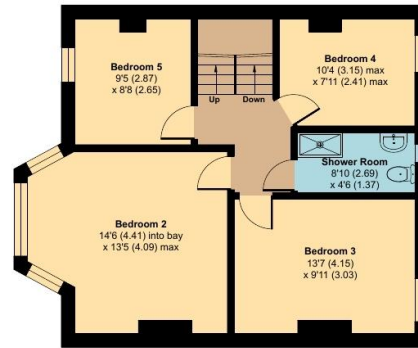
Approximate Area = 1801 sq ft / 167.3 sq m

Limited Use Area(s) = 147 sq ft / 13.6 sq m

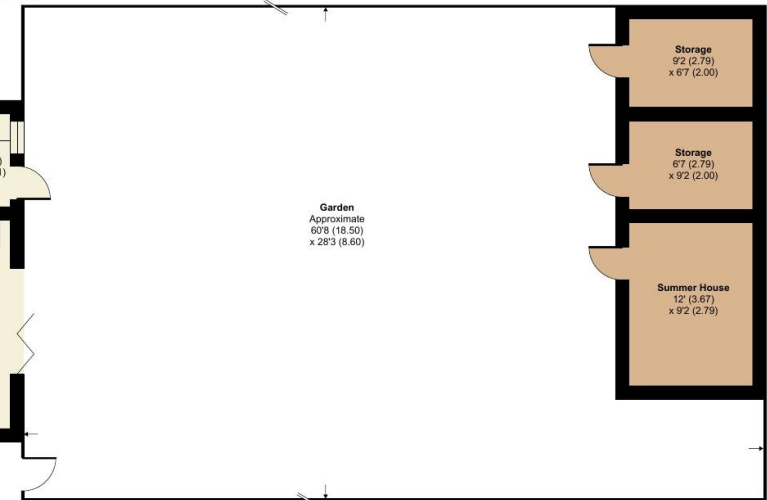
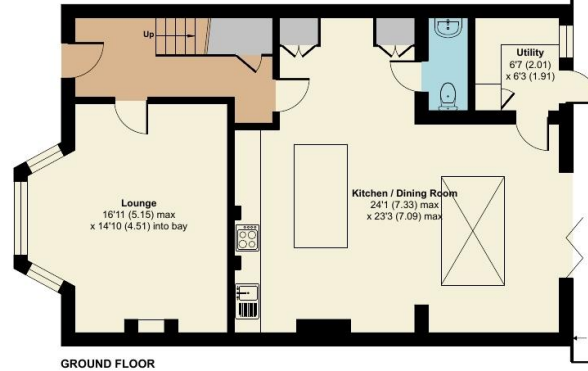
Outbuildings = 230 sq ft / 21.3 sq m

Total = 2178 sq ft / 202.3 sq m

For identification only - Not to scale



Denotes restricted head height



Floor plan produced in accordance with RICS Property Measurement 2nd Edition, Incorporating International Property Measurement Standards (IPMS2 Residential). © nichecom 2026. Produced for Chattertons Estate Agents Ltd. REF: 1421918

All dimensions are approximate and are quoted for guidance only, their accuracy cannot be confirmed. Reference to appliances and/or services does not imply they are necessarily in working order or fit for the purpose. Buyers are advised to obtain verification from their solicitors as to the freehold/leasehold status of the property, the position regarding any fixtures and fittings and where the property has been extended / converted as to Planning approval and Building Regulation compliance. These particulars do not constitute or form part of an offer or contract, nor may they be regarded as representations. All interested parties must themselves verify their accuracy. Where a room layout is included this is for general guidance only, it is not to scale and its accuracy cannot be confirmed. Ref Code:

020 8859 4000

405 Footscray Road
New Eltham SE9 3UL

sales.neweltham@chattertons.org.uk

Chattertons

EST 1893