

# ELPHINSTONE ROAD

SOUTHSEA | HAMPSHIRE | PO5 3HR



£599,950  
Freehold

- Impressive Semi-Detached House with Parking
- Five Double Bedrooms Over Four Floors
- Located within Central Southsea : Outbuilding/ Store
- Walking Distance to Shops and Seafront
- West Facing Court Yard Garden : 16 Solar Panels
- Period Features Throughout This Home
- Offered with No Forward Chain
- Viewing Advised!



## In Brief

Currently the flexible accommodation spans four floors, offering a total of 290 square meters of living space with high ceilings. The layout includes five bedrooms, three shower rooms, family bathroom, and a variety of functional areas. The house boasts a spacious kitchen, two living rooms, and a dining room, providing ample space for family living and entertaining. Additional rooms include an office, three utility rooms, a WC on each level and a good-sized rear garden with side access, benefitting from being west facing. The interior showcases a mix of traditional and modern elements. The entrance hallway features a grand chandelier and a carpeted staircase with ornate railings. Both living rooms is elegantly appointed with period furniture, feature fireplaces, and large windows allowing natural light to flood the space. The kitchen is well-equipped with wooden cabinetry and appliances, including a range hood. The bedrooms are spacious with some featuring fireplaces. The bathrooms are updated, with one showcasing a striking blue and white checkered floor and a glass-enclosed shower.

£599,950

## KEY FACTS

TENURE: Freehold

EPC RATING: 'C'

COUNCIL TAX BAND: 'E'



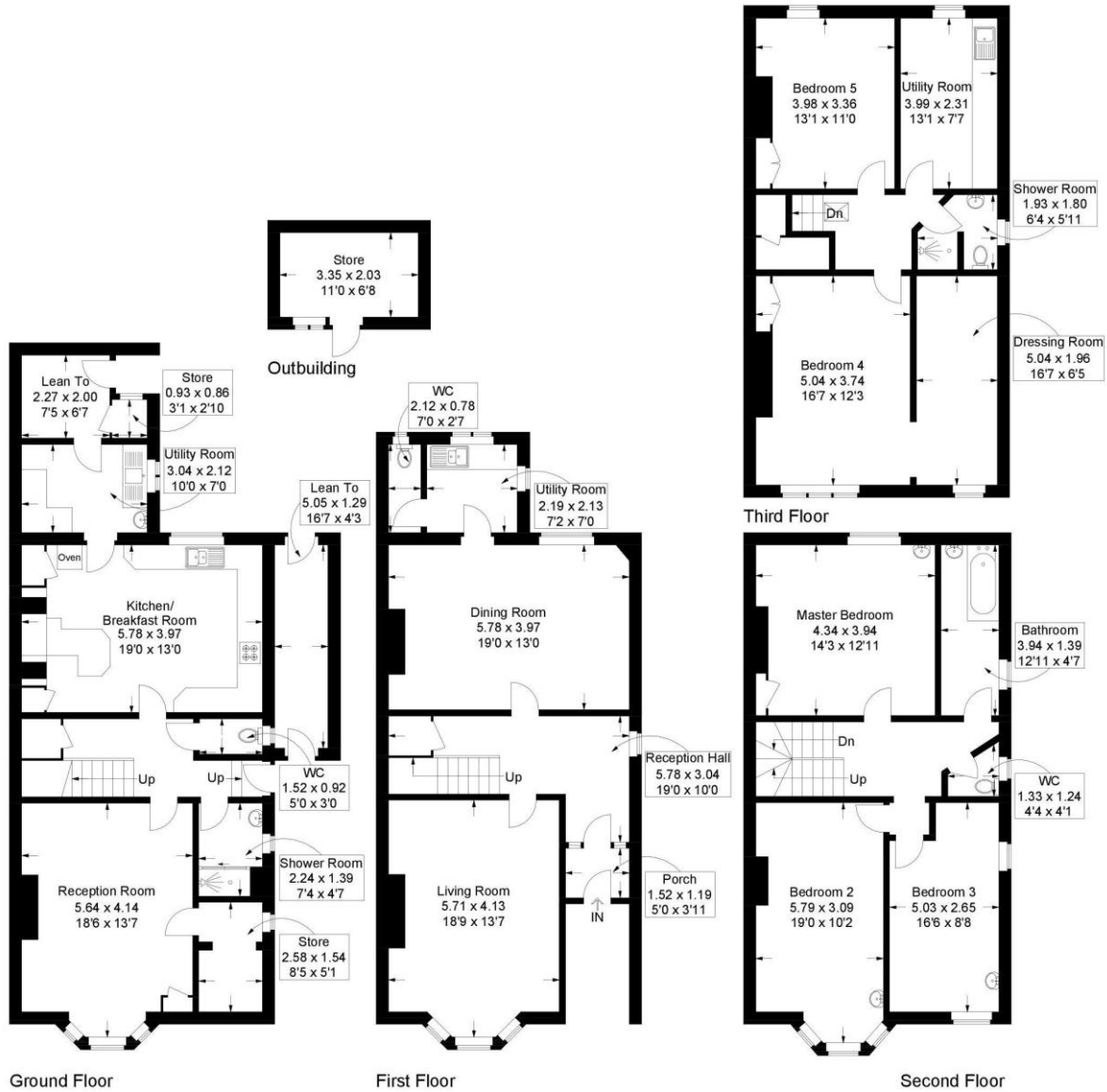
# ELPHINSTONE ROAD

SOUTHSEA | HAMPSHIRE | PO5 3HR



**Elphinstone Road, Southsea**

Approximate Gross Internal Area = 290.5 sq m / 3127 sq ft  
 Outbuilding = 7 sq m / 75 sq ft  
 Total = 297.5 sq m / 3202 sq ft



This plan is for layout guidance only. Not drawn to scale unless stated. Windows and door openings are approximate. Whilst every care is taken in the preparation of this plan, please check all dimensions, shapes and compass bearings before making any decisions reliant upon them.

**Southsea**  
 Sales & Lettings  
 7/9 Stanley Street,  
 Southsea, PO5 2DS  
 Tel: 023 9281 5221

**Old Portsmouth & Gunwharf Quays**  
 Sales & Lettings  
 The Seagull, 13 Broad Street,  
 Old Portsmouth, PO1 2JD  
 Tel: 023 9281 5221

**Drayton & Out of Town**  
 Sales & Lettings  
 139 Havant Road,  
 Drayton, PO6 2AA  
 Tel: 023 9221 0101

**London**  
 Sales & Lettings  
 Mayfair Office, Cashel House,  
 15 Thayer Street, W1U 3JT  
 Tel: 0870 112 7099

**Southsea**  
 Admin Centre  
 12 Marmion Road,  
 Southsea, PO5 2BA  
 Tel: 023 9282 2300

[www.fryandkent.com](http://www.fryandkent.com)



The services or appliances, plumbing, heating or electric installations have not been tested by the selling agent so we are unable to confirm that they are in working order. Whilst we endeavour to make our sales details accurate and reliable, they should not be relied upon as statements or representations of fact, and do not constitute any part of an offer contract. The seller does not make or give, nor do we or our employees have the authority to make or give, any representation or warranty in relation to the property.

