



**1 Pingle Rise**  
, Matlock, DE4 3TN  
**£612,500**





## 1 Pingle Rise

, Matlock, DE4 3TN

A stunning 5 bedroom detached family home, situated in this sought-after development built by reputable builders, William Davis. Offering 2475 sqft of spacious living accommodation over three storeys, the property benefits from a beautiful south westerly facing patio and garden, incredible views towards Riber Castle and driveway providing ample off street parking and double garage.

The ground floor comprises; Entrance porch and inner hallway, open plan living space with log burning stove, dining kitchen with bay window, integrated appliances and patio doors to the rear garden, separate utility room, study/snug, downstairs WC.

The first floor comprises; An impressive master suite with built in wardrobe space and ensuite shower room, two generous double bedrooms and family bathroom with bath and separate shower.

The second floor comprises; A further two double bedrooms and shower room.

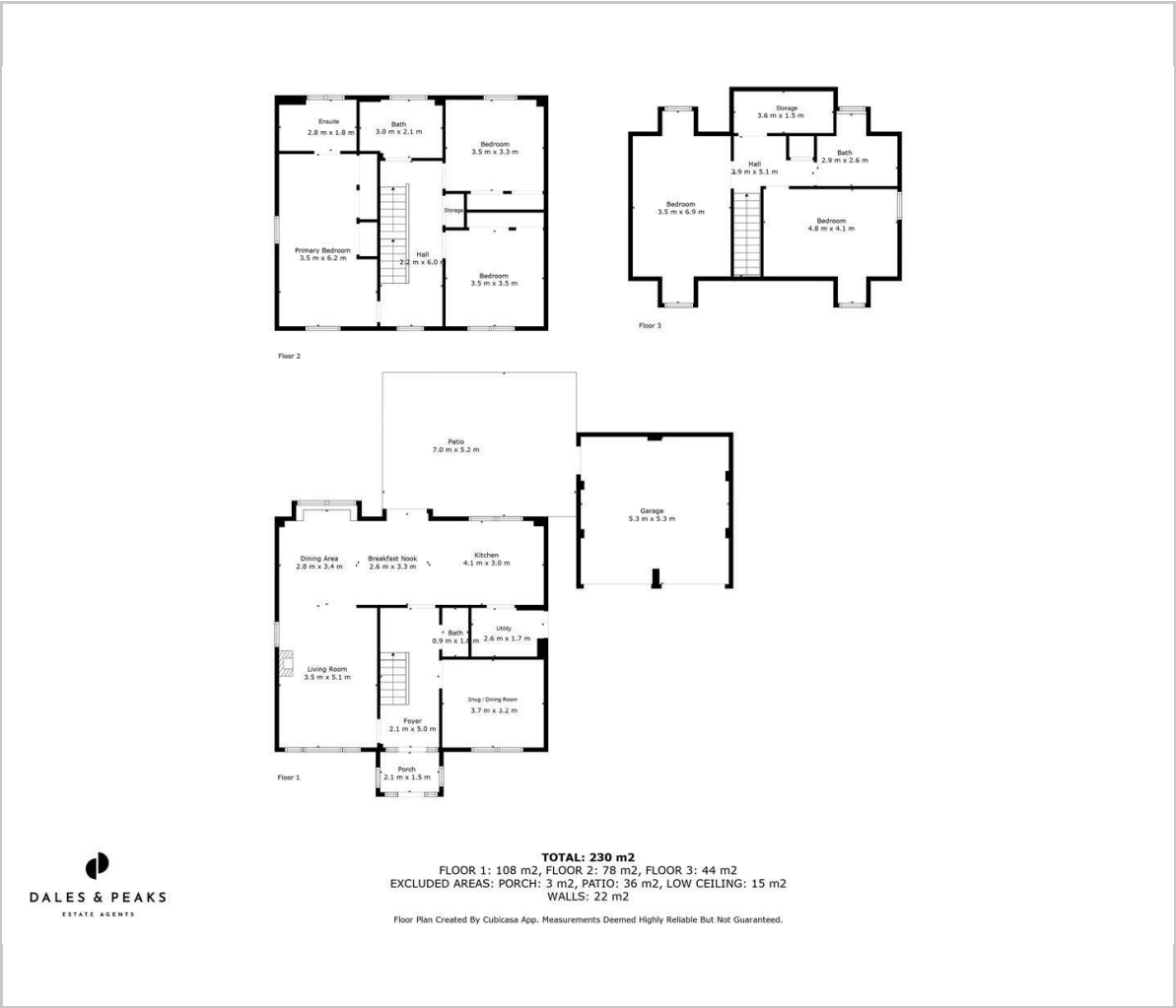
**Dales and Peaks ForwardMove**  
- Please read







Floor Plan

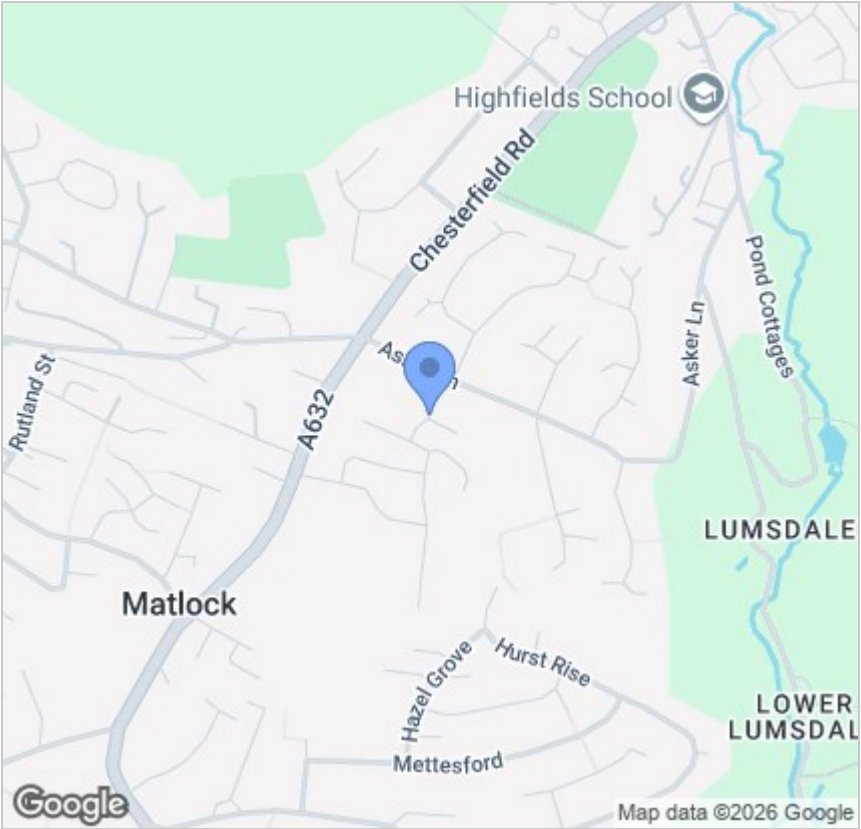


Viewing

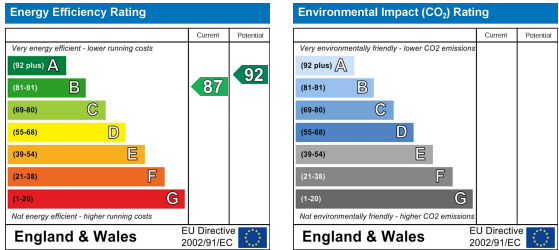
Please contact our Chesterfield Office on 01246 567540 if you wish to arrange a viewing appointment for this property or require further information.

These particulars, whilst believed to be accurate are set out as a general outline only for guidance and do not constitute any part of an offer or contract. Intending purchasers should not rely on them as statements of representation of fact, but must satisfy themselves by inspection or otherwise as to their accuracy. No person in this firms employment has the authority to make or give any representation or warranty in respect of the property.

Area Map



Energy Efficiency Graph



131 Chatsworth Road, Chesterfield, Derbyshire, S40 2AP  
T: 01246 567540



E: info@dalesandpeaks.co.uk  
www.dalesandpeaks.co.uk