



**Forge Fields, Lydiard Millicent – SN5 3WS**  
Wiltshire

Guide Price **£425,000**  
**mcfarlane**  
property.com

## Forge Fields

Lydiard Millicent, Wiltshire

- Detached FOUR Bedroom House
- SOUTH Facing Garden
- Sought After Village Location
- Quiet Cul-De-Sac Position
- Versatile Accommodation
- Enclosed Rear Gardens and Open Plan frontage
- Focused and Motivated Clients

A well presented Four Bedroom detached home located in the sought after village of Lydiard Millicent.

This well cared for family home offers flexible and versatile accommodation over two floors with an enclosed walled rear garden with southerly aspect.



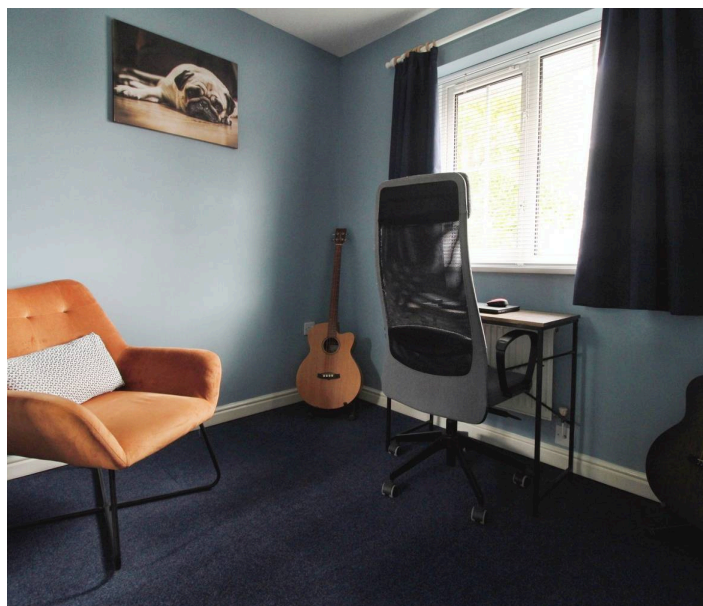
## Forge Fields

Lydiard Millicent, Wiltshire

Lydiard Millicent is a delightful picturesque Village Lydiard Millicent and positioned approximately 3.5 miles (6 km) west of the centre of Swindon. The parish contains the hamlets of Lydiard Green, Lydiard Plain, Greatfield and Green Hill. There is a local pub The Sun Inn that is well respected locally.

Council Tax band: E

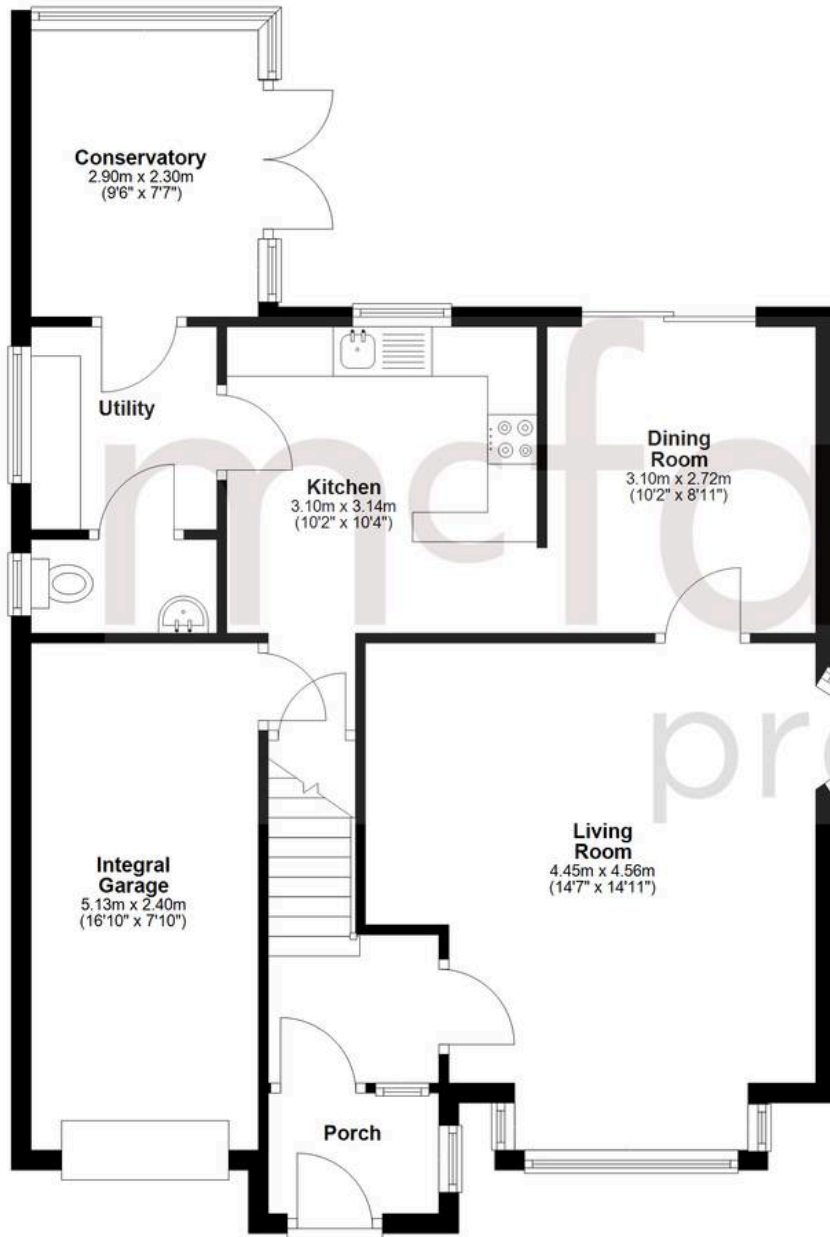
Tenure: Freehold



**mcfarlane**  
property.com

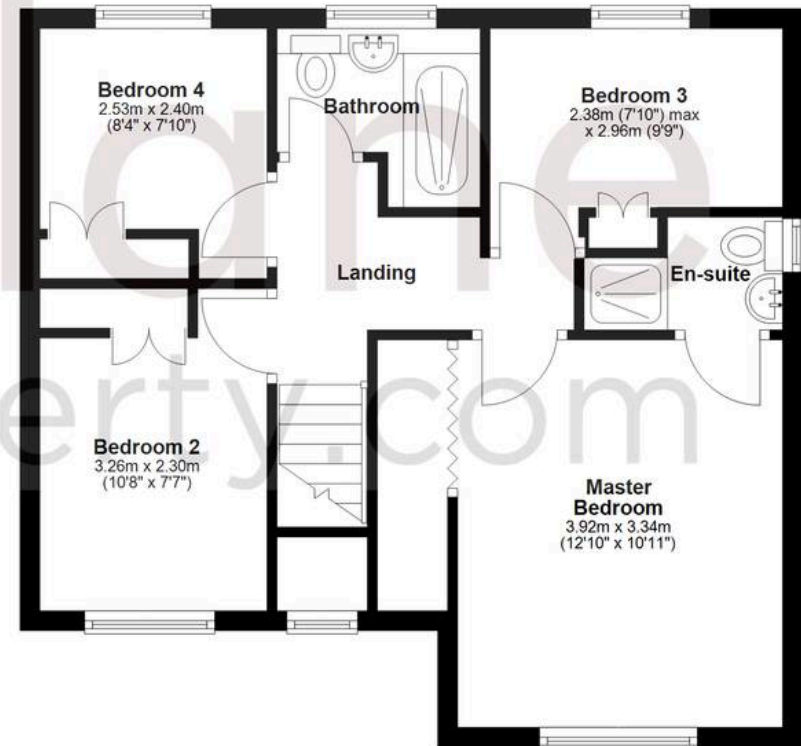
## Ground Floor

Approx. 74.1 sq. metres (797.5 sq. feet)



## First Floor

Approx. 49.0 sq. metres (526.9 sq. feet)



Total area: approx. 123.0 sq. metres (1324.4 sq. feet)

Agents Note: Whilst every care has been taken to prepare these sales particulars, they are for guidance purposes only. All measurements are approximate and for general guidance purposes only and whilst every care has been taken to ensure their accuracy, they should not be relied upon and potential buyers are advised to recheck the measurements.