



235 Old Church Road, Coventry, West Midlands, CV6 7DZ

Offers In The Region Of £200,000

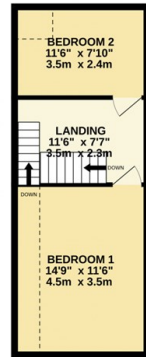
- Modern Interior

- Loft Conversion

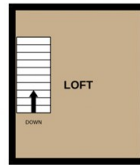
GROUND FLOOR
476 sq ft. (44.2 sq m.) approx.



1ST FLOOR
348 sq ft. (32.2 sq m.) approx.



2ND FLOOR
154 sq ft. (14.3 sq m.) approx.



TOTAL FLOOR AREA: 976 sq ft. (90.7 sq m.) approx.
While every attempt has been made to ensure the accuracy of the floorplan contained herein, measurements of doors, windows, rooms and any other items are approximate and no responsibility is taken for any error, omission or misstatement. This plan is for guidance purposes only and should be used as such by any prospective purchaser. The services, systems and appliances shown have not been tested and no guarantee as to their operability or efficiency can be given.
Made with Metropix (2023)



Directions

Viewings

Viewings by arrangement only.
Call 02477360158 to make an appointment.

Council Tax Band

A

EPC Rating:

Energy Efficiency Rating		Current	Potential
<i>Very energy efficient - lower running costs</i>			
(92 plus) A			
(81-91) B			
(69-80) C			
(55-68) D			
(39-54) E			
(21-38) F			
(1-20) G			
<i>Not energy efficient - higher running costs</i>			
England & Wales	EU Directive 2002/91/EC		