



Porchester Square, W2

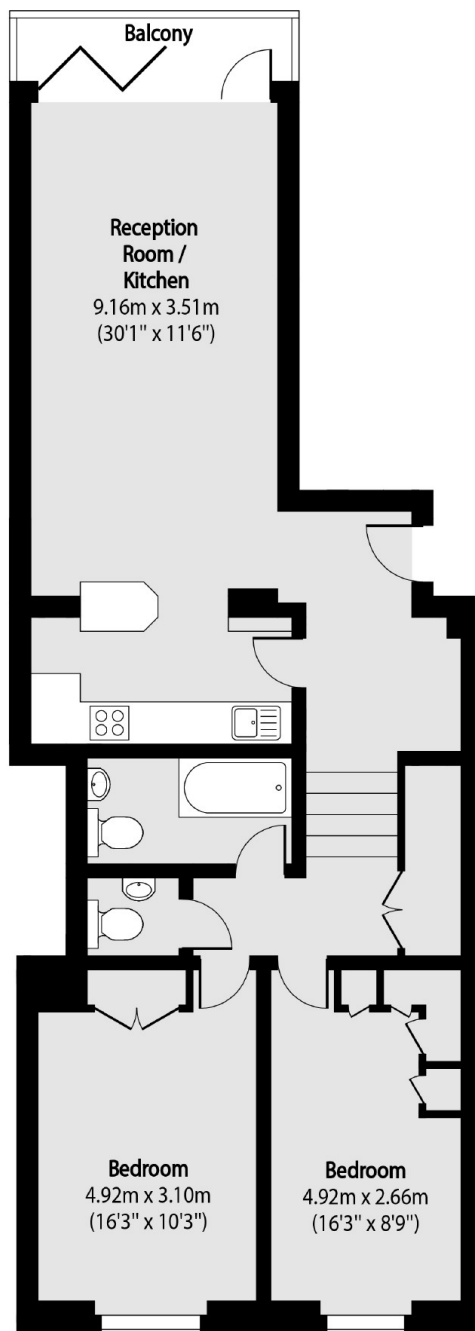
£3,500 Per week

A newly refurbished apartment in this portered block with two large bedrooms, family bathroom with separate WC and a spacious open plan kitchen. Available immediately.

Features

- Lift
- Day time porter
- Communal gardens
- Balcony
- Fitted wardrobes
- Washer/Dryer

Porchester Square, London, W2



Total area (approx): 84.96 sq m (915 sq. ft)

Balcony total area (approx): 3.51 sq m (37 sq. ft)