



Cornforth Lane, NW7

£675,000

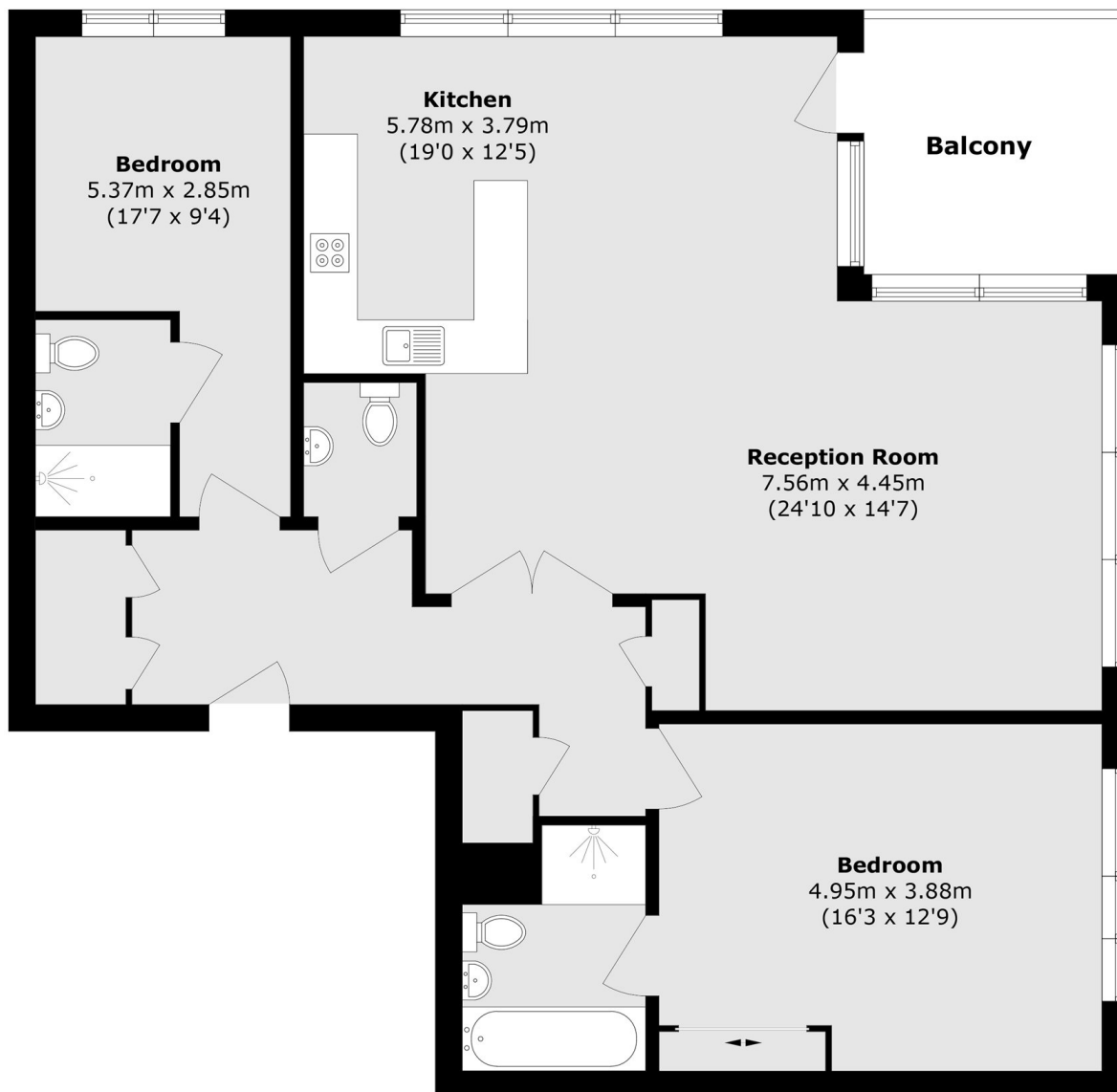
Spanning at nearly 1,200sqft is this stunning two bedroom apartment set within a modern development. With an on-site gym, concierge, an open plan kitchen/reception room with floor to ceiling windows and a private balcony. This apartment also has wrap-a-round views of Totteridge Valleys and is remarkably bright. The property also includes two private parking spaces.

Cornforth Lane is located about a mile from Mill Hill East station and offers picturesque views over Folly Brook. The development falls within the catchment area for well-regarded local schools and is just a short drive from both Finchley Central and Mill Hill Broadway. Both areas offer a variety of restaurants, coffee shops and supermarkets.

Features

- Two Double Bedrooms
- Open Plan
- Gym
- Concierge
- Stunning Views
- Underground Parking
- Lots of Natural Light

Cornforth Lane, London, NW7



Total area (approx.): 109.5 sq. m (1178.6 sq. ft)

Balcony area (approx.): 8.7 sq. m (93.6 sq. ft)