



£600,000

Wolsey Close, Southall, UB2



- 3 Bedroom
- Semi Detached
- Almost 950 Sq Ft Outbuilding
- 1,089 Sq Ft Accommodation
- Off Street Parking
- Private Garden

Located in a quiet cul de sac close to Hanwell is this, 3 bedroom, semi detached, family home, with off street parking and almost 950 sq ft of rarely available outbuildings. With 1,089 sq ft of accommodation the property comprises entrance hallway, reception room, large store, dining room, extended kitchen and shower room. Upstairs has 3 bedrooms and family bathroom. Further benefits include, off street parking, private garden and enviable 949 sq ft of outbuildings with another parking space and rear access from Tentelow Lane. Wolsey Close has good transport links and in an excellent school catchment area.



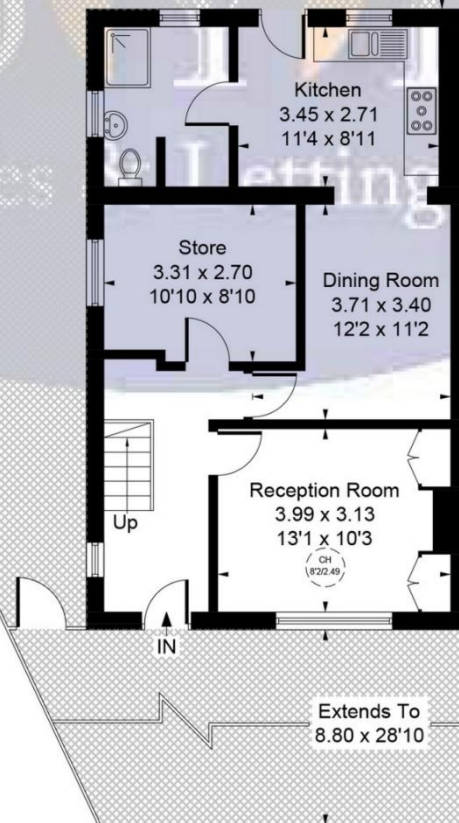
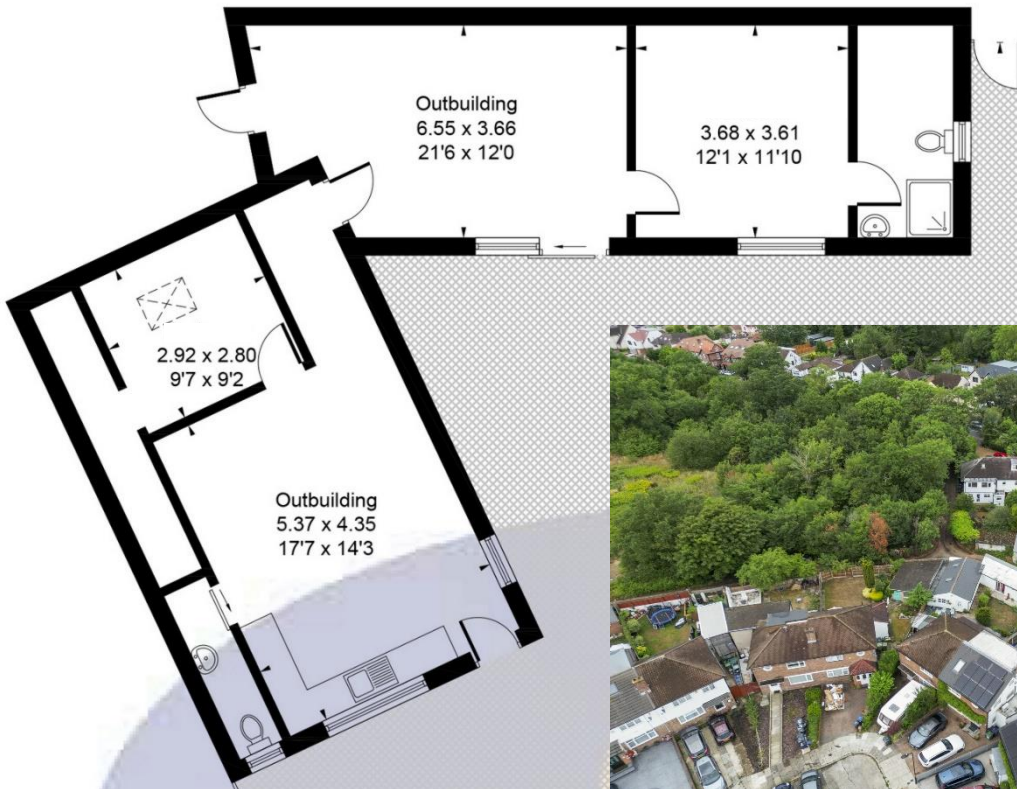


Wolsey Close, UB2 4NQ

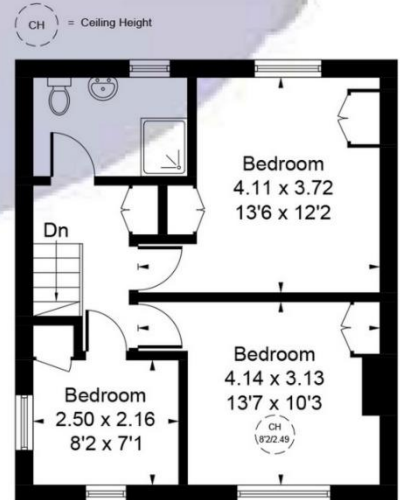
Approximate Gross Internal Area = 101.17 sq m / 1089 sq ft

Outbuilding = 88.15 sq m / 949 sq ft

Total = 189.32 sq m / 2038 sq ft



Ground Floor
59.52 sq m / 641 sq ft



First Floor
41.65 sq m / 448 sq ft

Whilst every attempt has been made to ensure the accuracy of the floor plan contained here, measurements of doors, windows, rooms and any other items are approximate and no responsibility is taken for any error, omission, or mis-statement. This plan is for illustrative purposes only and should be used as such by any prospective purchaser.

© Vizion Property Marketing Produced for Doyle Sales & Lettings

Map



VIEWING BY APPOINTMENT WITH AGENTS DOYLE SALES & LETTINGS

11 Broadway Buildings,Boston Rd,Hanwell,London,W7 3TT T: 020 8840 0171 E: info@doylesalesandlettings.co.uk W: www.doylesalesandlettings.co.uk

General: While we endeavour to make our sales particulars fair, accurate and reliable, they are only a general guide to the property and, accordingly, if there is any point which is of particular importance to you, please contact the office and we will be pleased to check the position for you, especially if you are contemplating travelling some distance to view the property.

Measurements: These approximate room sizes are only intended as general guidance. You must verify the dimensions carefully before ordering carpets or any built-in furniture.

Services: Please note we have not tested the services or any of the equipment or appliances in this property, accordingly we strongly advise prospective buyers to commission their own survey or service reports before finalizing their offer to purchase.

THESE PARTICULARS ARE ISSUED IN GOOD FAITH BUT DO NOT CONSTITUTE REPRESENTATIONS OF FACT OR FORM PART OF ANY OFFER OR CONTRACT. THE MATTERS REFERRED TO IN THESE PARTICULARS SHOULD BE INDEPENDENTLY VERIFIED BY PROSPECTIVE BUYERS OR TENANTS. NEITHER DOYLE SALES & LETTINGS NOR ANY OF ITS EMPLOYEES OR AGENTS HAS ANY AUTHORITY TO MAKE OR GIVE ANY REPRESENTATION OR WARRANTY WHATEVER IN RELATION TO THIS PROPERTY.

YOUR HOME IS AT RISK IF YOU DO NOT KEEP UP REPAYMENTS ON A MORTGAGE OR OTHER LOAN SECURED ON IT.

Written quotations available on request. All loans secured on property. Life assurance is usually required.

EPC Rating D

