

## Gibbs Green, W14

### £500,000

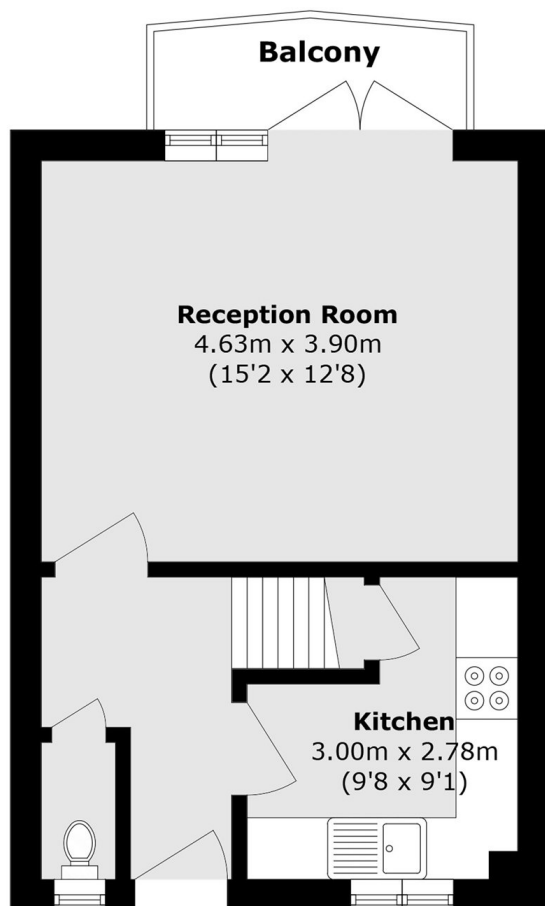
A newly refurbished three bedroom apartment offering split-level living, excellent space and a private balcony. The property is situated over the ground and first floors in a popular purpose built development. The property benefits from a separate kitchen, a modern bathroom and excellent storage space.

Gibbs Green is located in the West Kensington estate and is best accessed off Beaumont crescent. Well placed for West Kensington and Barons Court underground station and the A4 for easy access into and out of central London.

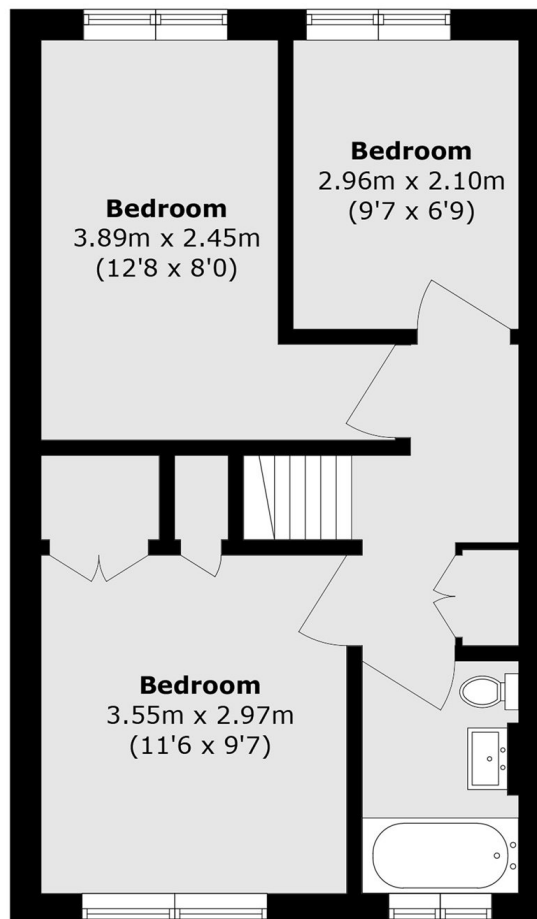
### Features

- No Onward Chain
- Three Bedrooms
- Split Level
- Long Leasehold
- Close To Tubes
- Modern

# Gibbs Green, London, W14



**Ground Floor**



**First Floor**

Total area (approx.): 70.9 sq. m (763.2 sq. ft)

Balcony area (approx.): 3.1 sq. m (33.4 sq. ft)