



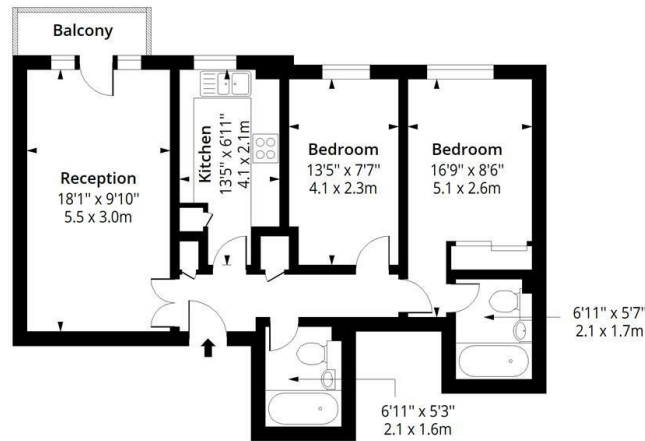
Flat 7, 8 Dock Street, London, E1 8JR

£2,800

- Two double bedrooms
- Master bedroom with en-suite
- Private balcony overlooking internal courtyard
- Spacious and bright reception room
- Well-maintained communal areas
- Excellent access to the City

Florin Court E1

Approx. Gross Internal Area 660 Sq Ft - 61.31 Sq M
Approx. Gross Balcony Area 26 Sq Ft - 2.42 Sq M



Second Floor

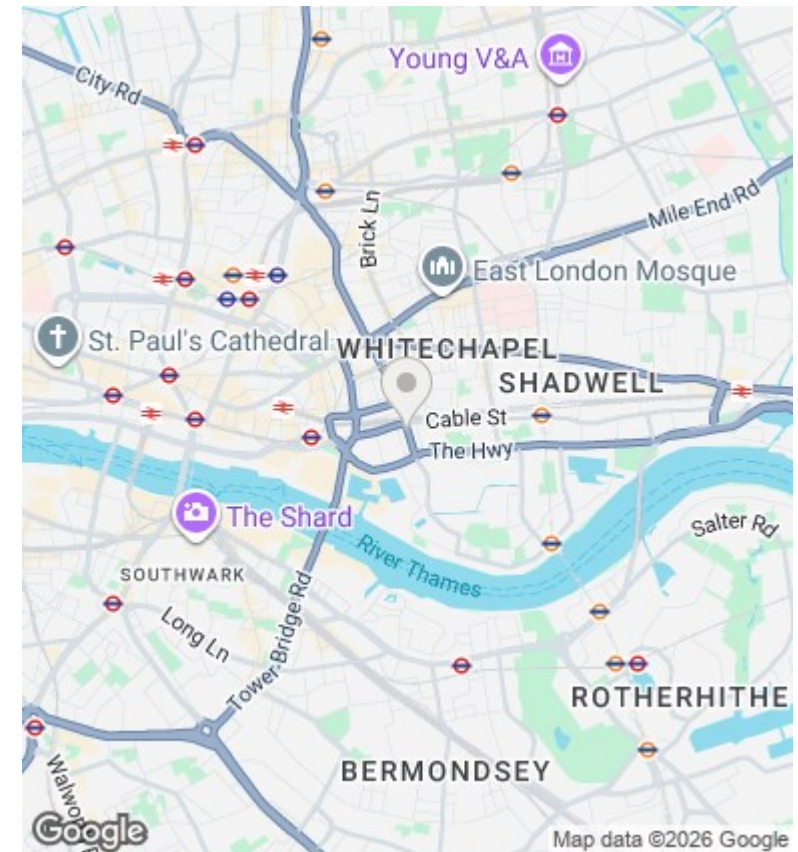
Floor Area 660 Sq Ft - 61.31 Sq M



Measured according to RICS IPMS2. Floor plan is for illustrative purposes only and is not to scale. Every attempt has been made to ensure the accuracy of the floor plan shown, however all measurements, fixtures, fittings and data shown are an approximate interpretation for illustrative purposes only. 1 sq m = 10.76 sq feet.

lpaplus.com

Date: 11/2/2026



Directions

Viewings

Viewings by arrangement only. Call 0208 075 4927 to make an appointment.

Council Tax Band

D

EPC Rating:

C

Energy Efficiency Rating		
	Current	Potential
Very energy efficient - lower running costs		
(92 plus) A		
(81-91) B		
(69-80) C	79	79
(55-68) D		
(39-54) E		
(21-38) F		
(1-20) G		
Not energy efficient - higher running costs		
England & Wales	EU Directive 2002/91/EC	