



## Hereford Road, W2

£750,000

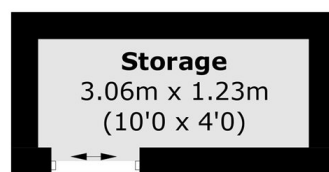
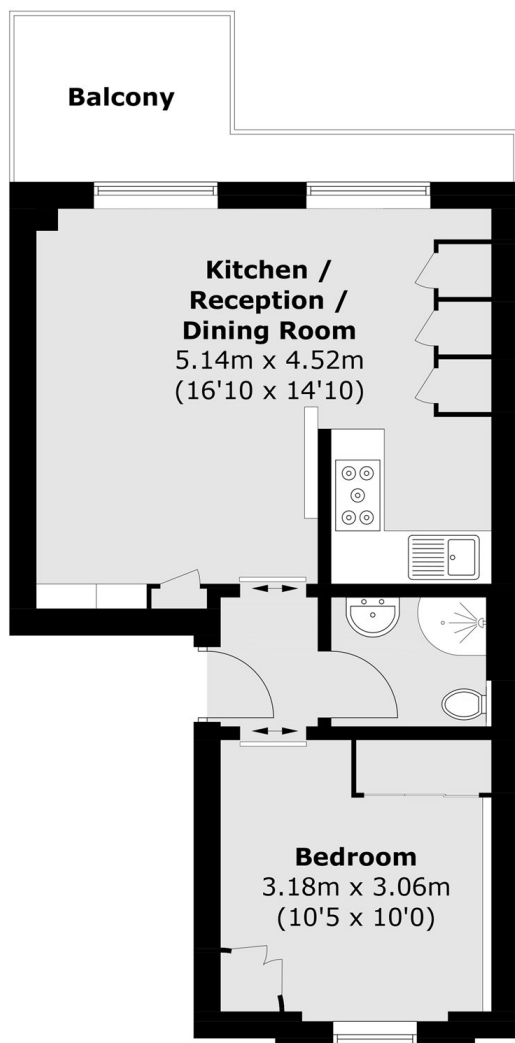
A beautiful refurbished one bedroom apartment located on the first floor of this converted Victorian House. The apartment features high ceilings, parquet flooring throughout, and a fully fitted kitchen with high end modern appliances.

Berrington House, Hereford Road is ideally located between Westbourne Grove and Notting Hill Gate. Hyde Park is a short walk away as are the transport links of Queensway, Bayswater and Notting Hill Gate.

### Features

- One Double Bedroom
- First Floor
- Private Balcony
- Access To Princes Square
- Ample Storage
- White Stucco Fronted

# Hereford Road, London, W2



**Above Shower/ Hall**



**First Floor Half Landing**

## First Floor

Total area (approx.) 37.9 sq. m (407.9 sq. ft)  
Balcony (approx.) 6.3 sq. m. (67.8 sq. ft)  
Storage Above Shower/ Hall area (approx.) 3.7 m. (39.8 sq. ft)  
Storage area (approx.) 1.3 sq. m. (14.0 sq. ft)