



# Falcon

01752 600444

## 32 Reddicliff Close

Plymstock, Plymouth, PL9 9QJ

Guide Price £525,000 - £550,000





## In Brief

### Impressive extended 4 double-Bed Home with Views, Style & Landscaped Garden

<b>Reception Rooms</b>	Large living room and fabulous kitchen / diner extension	<b>Parking</b>	Driveway parking for two cars plus garage
<b>Bedrooms</b>	4 double bedrooms + ensuite	<b>Council Tax</b>	D
<b>Heating</b>	Gas central heating ( new boiler in 2024 )		
<b>Area</b>	1747 sq ft		
<b>Tenure</b>	Freehold		

## Description

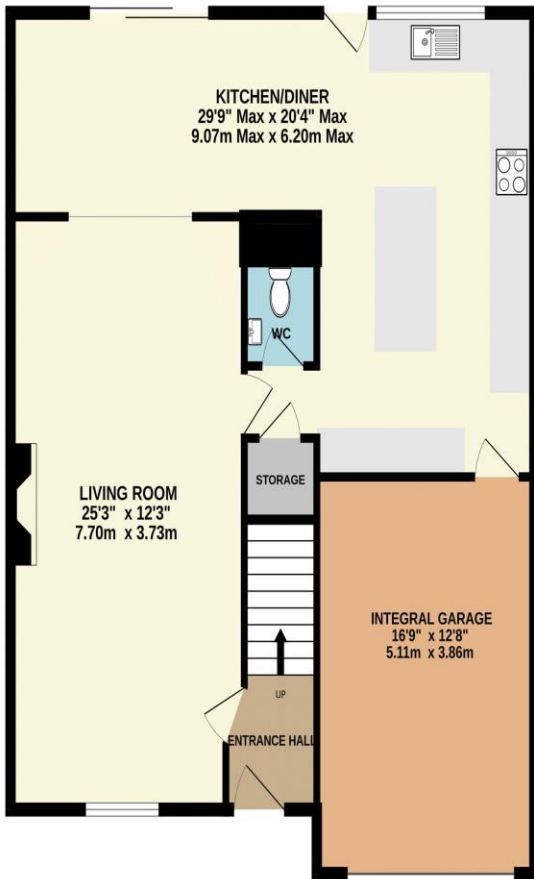
Positioned in an exceptional and highly sought-after residential location, this stylish and extended four-bedroom detached family home enjoys far-reaching views towards Plymouth and the distant moors. Beautifully presented throughout, the property offers contemporary living in a truly prime setting. A welcoming reception hallway leads to a spacious living room, which flows seamlessly via an archway into the impressive kitchen/diner – the true heart of the home. Finished to a high standard, it features sleek modern units, integrated appliances, and a central island with breakfast bar, perfect for both everyday living and entertaining. There is also a downstairs W/C and internal access to the garage, which benefits from an electric up-and-over door. Upstairs, four generous double bedrooms provide excellent accommodation, with the principal suite offering a particularly spacious feel, a large ensuite, and attractive open views to the rear. Lovingly owned, extended, and updated over the past 23 years, the home also benefits from gas central heating with a new boiler installed in 2024. Outside, the beautifully landscaped garden is a standout feature, with lawn and contemporary composite decking, enhanced by stylish glass and chrome balustrades. Ideally located close to excellent schools, including Plymstock School, this is a superb executive home combining space, style, and fabulous views.

Need A Mortgage?

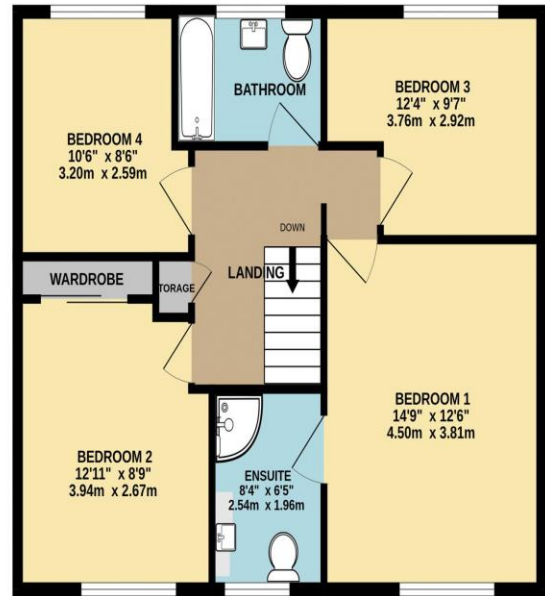
Don't pay more than you need to for your mortgage advice:  
ours is only £195 paid when you move!

# Floor Plans

GROUND FLOOR  
1022 sq.ft. (94.9 sq.m.) approx.



1ST FLOOR  
725 sq.ft. (67.4 sq.m.) approx.



TOTAL FLOOR AREA : 1747 sq.ft. (162.3 sq.m.) approx.  
Made with Metropix ©2026





We have not tested any apparatus, equipment, fixtures and fittings or services and so cannot verify that they are connected, in working order or fit for the purpose. Neither have we had sight of the legal documents to verify the Freehold or Leasehold status of any property; or sight of any consents, including Planning Permissions, building Regulations and Breaches of Covenants that may be required for alterations to the property. A buyer is advised to obtain verification from their Solicitor and/or Surveyor. Items shown in photographs are NOT included unless specifically mentioned within the Sales Particulars. Any floor plans on these details are not drawn to scale and are intended for guidance only

Falcon Property is an Introducer to Bradleys Financial Management Ltd. They are appointed representatives of Sesame Ltd who are authorised and regulated by the Financial Services Authority. Bradleys do not charge for mortgage advice, however a fee paying option is available. Typical fee is £195. Bradleys Financial Management: 16 Mannamead Road, Mutley, Plymouth, PL4 7AA

**Your home may be repossessed if you do not keep up repayments on your mortgage.**

