



4 Gas Street

Platt Bridge, Wigan, WN2 5LT

Price £129,995



It is with great pleasure to offer For Sale this spacious 2 bedroom mews in popular area of Wigan. The property is on a small development close to transport links, local amenities and both Wigan, Leigh and Bolton town centre all within driving distance. The property briefly comprises of an entrance / vestibule, living area with stairs to first floor accommodation, modern fitted kitchen / diner with French doors to rear garden and downstairs W.C. To the first floor the landing provides access to 2 spacious bedrooms and family bathroom with three piece suite in white with shower over bath. The property is warmed by Electric Heating and also benefits from UPVC double glazing throughout and a neutral decor. Externally there is a small front garden and low maintenance rear garden with rear gated access and there is an allocated parking space. Early internal viewing is a must and this property will appeal to first time buyer or buy to let investor. No Upward Chain.



GROUND FLOOR

Entrance / Porch

Lounge

Kitchen / Diner

W.C.

FIRST FLOOR

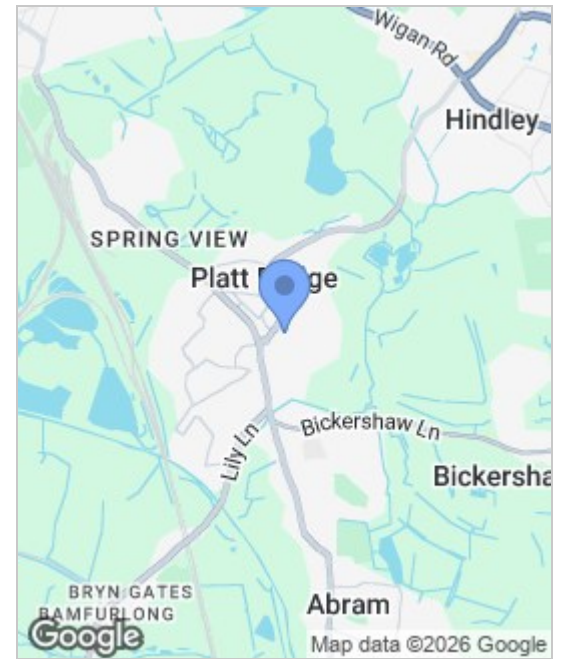
Master Bedroom

Bedroom 2

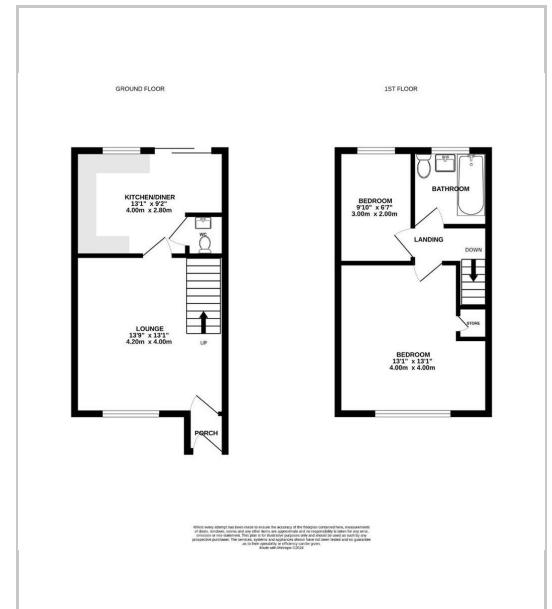
Bathroom

EXTERNAL

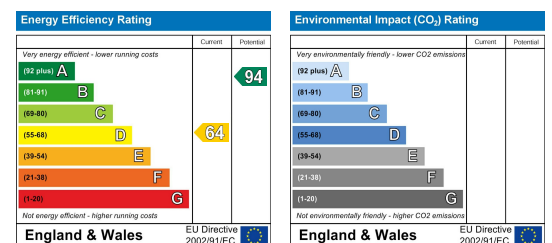
Area Map



Floor Plans



Energy Efficiency Graph



These particulars, whilst believed to be accurate are set out as a general outline only for guidance and do not constitute any part of an offer or contract. Intending purchasers should not rely on the representation of fact, but must satisfy themselves by inspection or otherwise as to their accuracy. No person in this firm's employment has the authority to make or give any representation or warranty in relation to the property.



Sapphire Homes (North) Ltd 80 Market Street, Wigan WNI 1HX
 T 01942 494944 E info@sapphirehomes.co.uk W www.sapphirehomes.co.uk VAT 183 759 366

specialists in sales, Lettings & Property Investments