

## Hansel Road, NW6

### £700,000

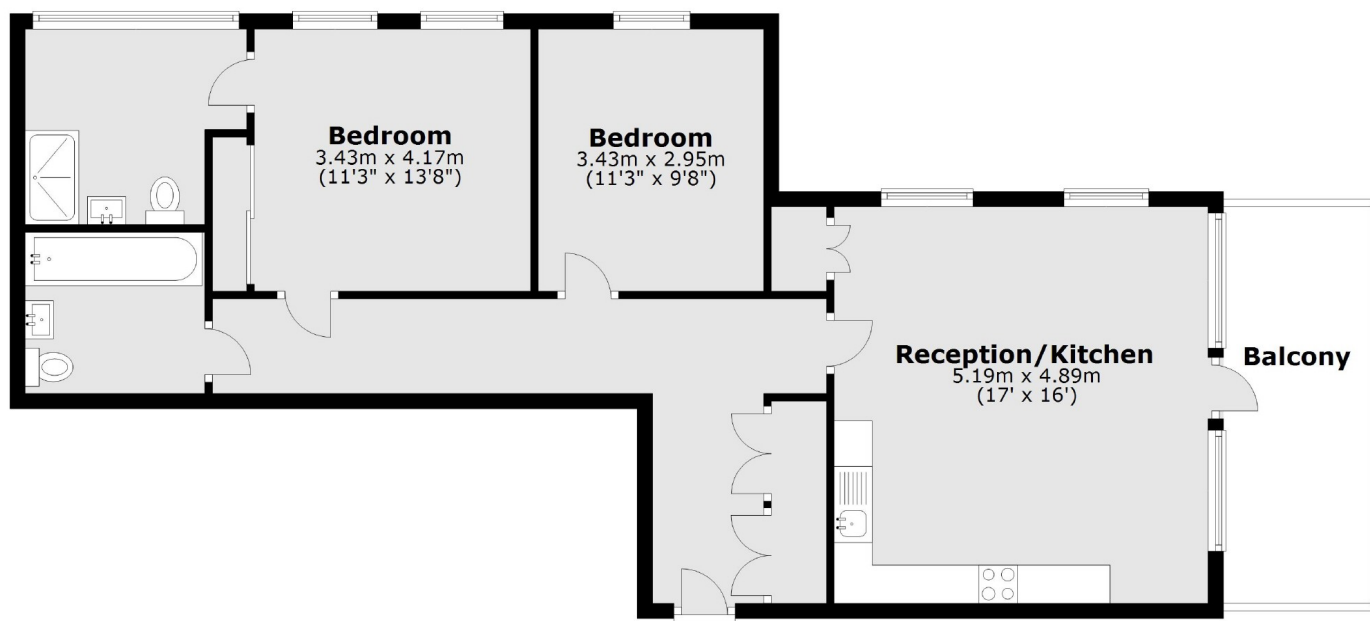
A stunning third floor flat set in a modern purpose-built block. Bright and spacious with high specification interiors, this property features two double bedrooms, two bathrooms and a private balcony accessible through the open plan reception/kitchen.

Ideal location next to Paddington Recreation ground, offering both the tranquillity of Maida Vale and Little Venice, and the vibrant energy of Kilburn Park and Queens Park.

### Features

- Lift & Key Fob Access
- Two Bathrooms
- Open Plan Reception/Kitchen
- Private Balcony
- Modern Development
- Communal Gardens

# Hansel Road, London, NW6



Main area: Approx. 80.1 sq. metres (862.4 sq. feet)  
Plus balconies, approx. 10.5 sq. metres (113.1 sq. feet)

## Dexters

Maida Vale  
298 Elgin Avenue  
London  
W9 1JS  
Sales  
020 7266 2020

Energy Rating: B. We aim to make our particulars both accurate and reliable. However they are not guaranteed; nor do they form part of an offer or contract. If you require clarification on any points then please contact us, especially if you're traveling some distance to view. Please note that appliances and heating systems have not been tested and therefore no warranties can be given as to their good working order.

 **RICS** | Regulated  
Estate Agent  
and Letting Agent

[dexters.co.uk](https://dexters.co.uk)