



Elvington, King's Lynn, PE30 4TB

welcome to

Elvington, King's Lynn

William H Brown are delighted to offer to market this spacious and versatile three bedroom detached home, located within close proximity of the Queen Elizabeth Hospital. Viewing highly recommended!



Kitchen

Wall and Base Units, Integrated Oven, Electric Hob, Sink and Mixer tap, Window to Front, Space for Appliances, Radiator

Lounge

Window to Front, Two Radiators, Sliding Door to Garden Room

Garden Room

Windows to Rear, Double Doors to Rear, Radiator

Utility Area

Office

Window to Rear

Cloakroom

WC, Hand Wash Basin

Bedroom One

Window to Front and Rear, Radiator, Built in wardrobes

Bedroom Two

Windows to Front and Rear, Built in wardrobes, Radiator

Bedroom Three

Window to Rear, Built in wardrobes, Radiator

Bathroom

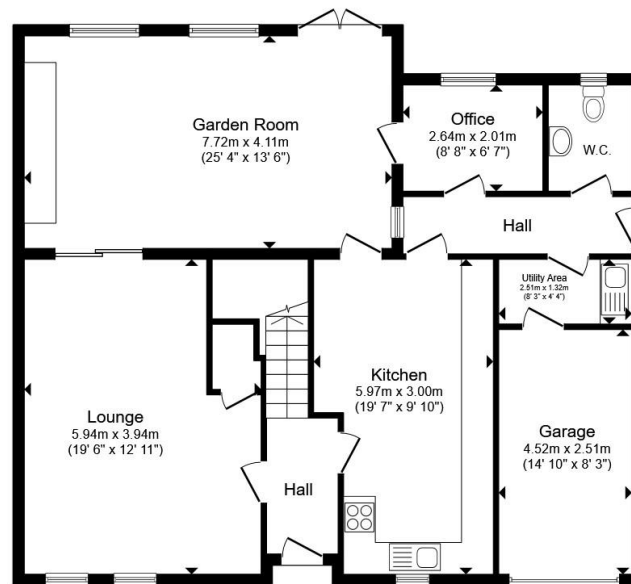
Bath, Hand Wash Basin, Radiator, Window

Wc

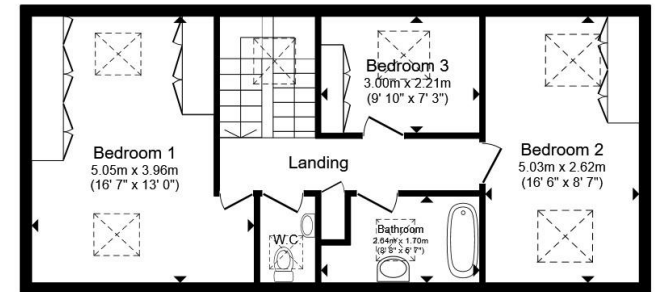
WC, Hand Wash Basin, Window

Outside

Driveway Parking to Garage and Enclosed Rear Garden



Ground Floor



First Floor

Total floor area 169.3 m² (1,822 sq.ft.) approx

This floor plan is for illustrative purposes only. It is not drawn to scale. Any measurements, floor areas (including any total floor area), openings and orientation are approximate. No details are guaranteed, they cannot be relied upon for any purpose and they do not form part of any agreement. No liability is taken for any error, omission or misstatement. A party must rely upon its own inspection(s). Powered by www.propertybox.io



check out more properties at williamhbrown.co.uk



welcome to

Elvington, King's Lynn

- Detached Property
- Three Bedrooms
- Spacious Accommodation
- Driveway and Garage
- Enclosed Rear Garden

Tenure: Freehold EPC Rating: Awaited
Council Tax Band: D

£325,000



Please note the marker reflects the
postcode not the actual property

check out more properties at williamhbrown.co.uk



Property Ref:
KLN115844 - 0002

1. MONEY LAUNDERING REGULATIONS Intending purchasers will be asked to produce identification documentation at a later stage and we would ask for your co-operation in order that there is no delay in agreeing the sale. 2. These particulars do not constitute part or all of an offer or contract. 3. The measurements indicated are supplied for guidance only and as such must be considered incorrect. Potential buyers are advised to recheck measurements before committing to any expense. 4. We have not tested any apparatus, equipment, fixtures or services and it is in the buyers interest to check the working condition of any appliances. 5. Where an EPC, or a Home Report (Scotland only) is held for this property, it is available for inspection at the branch by appointment. If you require a printed version of a Home Report, you will need to pay a reasonable production charge reflecting printing and other costs. 6. We are not able to offer an opinion either written or verbal on the content of these reports and this must be obtained from your legal representative. 7. Whilst we take care in preparing these reports, a buyer should ensure that his/her legal representative confirms as soon as possible all matters relating to title including the extent and boundaries of the property and other important matters before exchange of contracts.

William H Brown is a trading name of Sequence (UK) Limited which is registered in England and Wales under company number 4268443, Registered Office is Cumbria House, 16-20 Hockliffe Street, Leighton Buzzard, Bedfordshire, LU7 1GN. VAT Registration Number is 500 2481 05.



01553 771337



KingsLynn@williamhbrown.co.uk



40-42 King Street, KING'S LYNN, Norfolk, PE30 1ES



williamhbrown.co.uk