

## 28 Burch Close, King's Lynn PE30 4UJ

£199,995

🛏 2 🚗 1 🛋 2

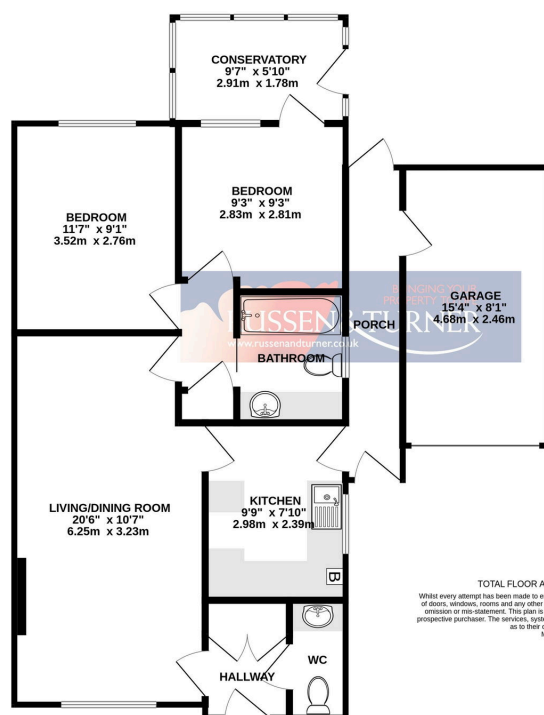


**NO ONWARD CHAIN!!** Are you searching for a well-located, easy-to-live-in home close to the hospital, all on one level? This deceptively spacious semi-detached bungalow could be exactly what you've been waiting for. The property delivers an appealing blend of comfort, practicality and location, ticking nearly every box you could ask for.

## Key Features

- Semi-Detached Bungalow
- Close to the Hospital
- Private Rear Garden
- Generous 20ft Living/Dining Room
- Bright and Airy Accommodation
- Two Double Bedrooms
- No Onward Chain
- Garage and Off-road Parking
- Gas Central Heating
- Handy Second Cloakroom

GROUND FLOOR  
824 sq.ft. (76.6 sq.m.) approx.



TOTAL FLOOR AREA: 824 sq.ft. (76.6 sq.m.) approx.

Whilst every attempt has been made to ensure the accuracy of the floorplan contained here, measurements of floors, windows, rooms and any other items are approximate and no responsibility is taken for any error, omission or mis-statement. This plan is for illustrative purposes only and should be used as such by any prospective purchaser. The services, systems and appliances shown have not been tested and no guarantee as to their operability or efficiency can be given.  
Made with Metagor ©2023