



ST. ERVANS ROAD, W10

£550,000

Split Level
Private Balcony
Two Bedrooms
Separate Kitchen
Spacious Living
Golborne Road Location

@marshandparsons
marshandparsons.co.uk

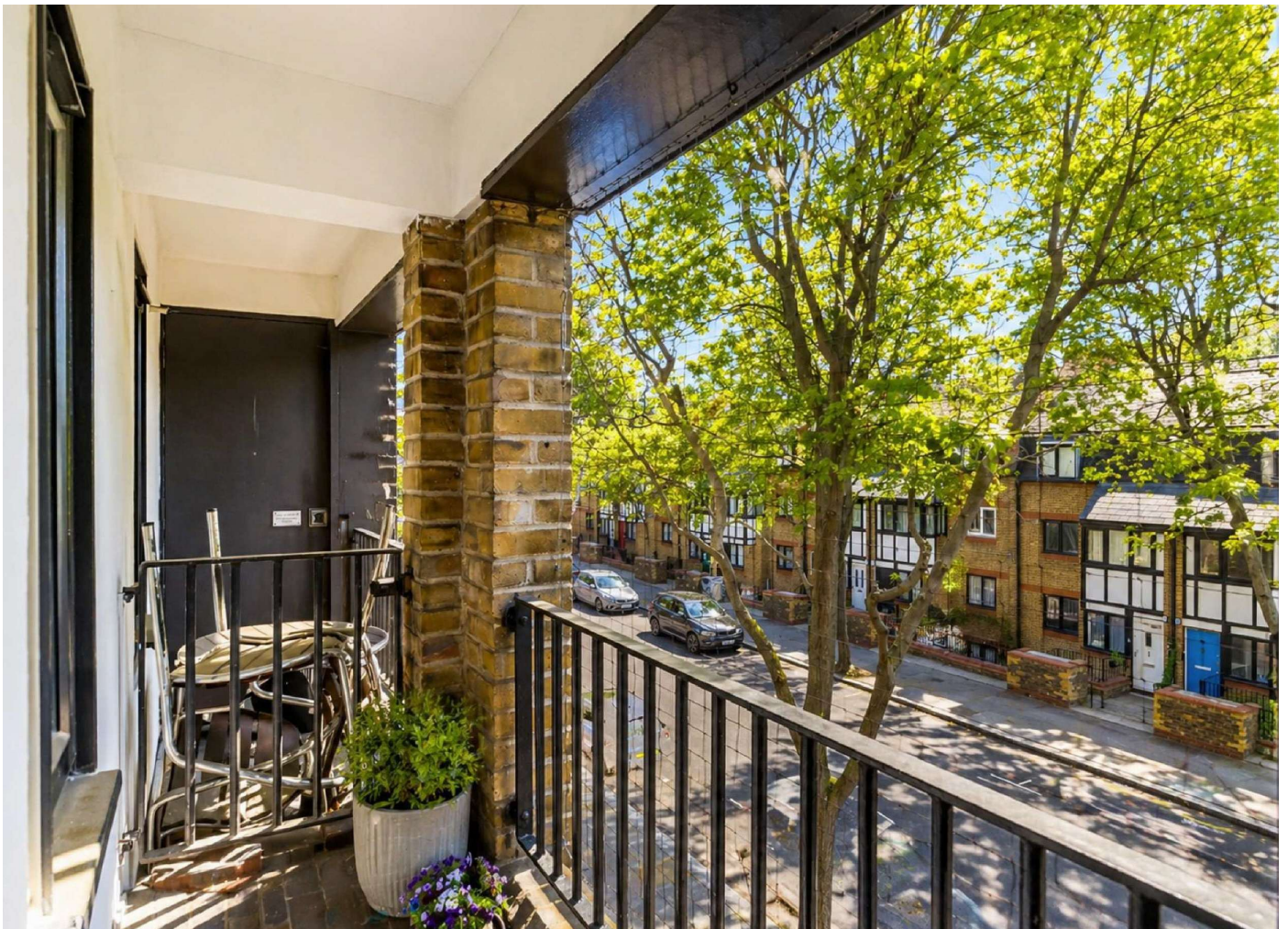
MARSH &
PARSONS



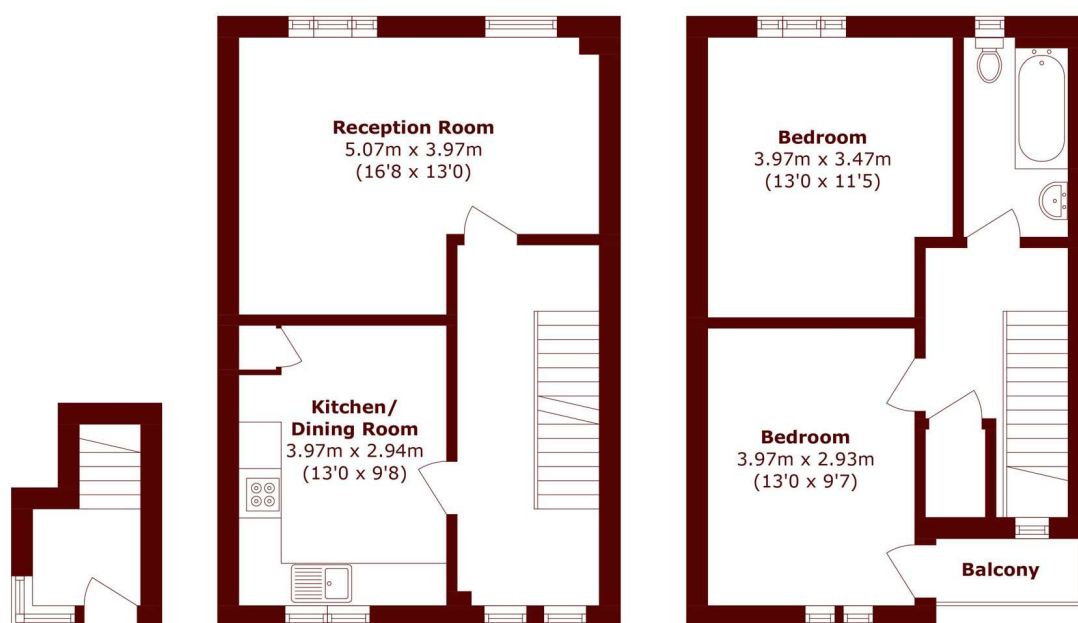
ABOUT THE PROPERTY

A well-presented two bedroom maisonette arranged over two floors, with a private balcony, separate kitchen and generous living space on a popular residential street.

Situated just off Golborne Road, close to Queen's Park and Portobello Road, with a range of cafés, restaurants and transport links nearby, offering easy access into central London.



STEP INSIDE ST. ERVANS ROAD



Ground Floor

First Floor

Second Floor

Total area (approx.): 82.5 sq. m (888.0 sq. ft)
Balcony area (approx.): 2.1 sq. m (22.6 sq. ft)

North Kensington
020 7313 8350

Energy Rating: C We aim to make our particulars both accurate and reliable. However, they are not guaranteed; nor do they form part of an offer or contract. If you require clarification on any points then please contact us, especially if you're traveling some distance to view. Please note that appliances and heating systems have not been tested and therefore no warranties can be given as to their good working order

**MARSH &
PARSONS**