

Scott Ellis Gardens, NW8

£1,950 Per calendar month

Spacious one bedroom apartment in a purpose built block close to Lords Cricket Ground in St Johns Wood. Bright reception room, separate kitchen, double bedroom and modern bathroom. Wood floors throughout.

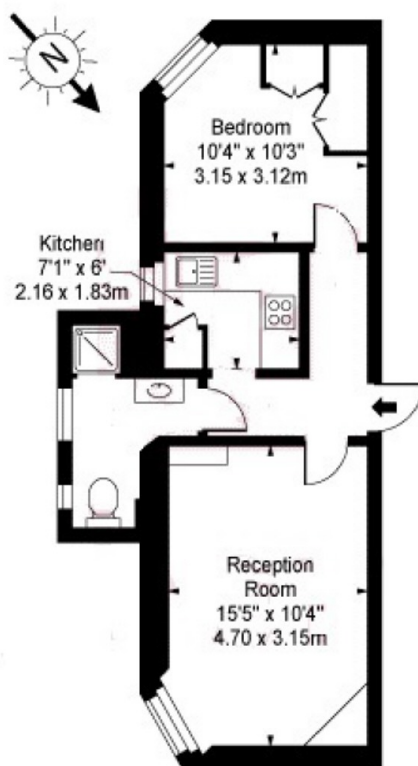
Scott Ellis Gardens is located close to Lords Cricket Ground and a short walk to St Johns Wood tube and High Street.

Features

- One Double Bedroom
- Spacious Reception Room
- Wood Floors
- Private Purpose Built Block
- Modern Throughout
- Furnished

Scott Ellis Gardens, London, NW8

Scott Ellis Gardens, St John's Wood, NW8 9HG



Third Floor

Approx Gross Internal Area 422 Sq Ft - 39.20 Sq M

For Illustration Purposes Only - Not To Scale Floor Plan by www.nogaphotostudio.com Ref: No.11952

This floor plan should be used as a general outline for guidance only. Any intending purchaser or lessee should satisfy themselves by inspection, searches, enquiries and full survey as to the correctness of each statement. Any areas, measurements or distances quoted are approximate and should not be used to value a property or be the basis of any sale or let.