



Sheen Court

Richmond, TW10

Asking Price £475,000

A beautifully appointed two-bedroom first-floor apartment, offered with a share of freehold and no onward chain.

The elegant reception room is enhanced by a sweeping bay window that floods the space with natural light and provides generous proportions for both formal dining and relaxed seating. A decorative fireplace serves as an attractive focal point, adding to the room's period charm. The principal bedroom enjoys an impressive dual aspect and features extensive bespoke fitted wardrobes, while the second bedroom—a versatile small double—functions perfectly as a stylish home office, nursery or inviting guest bedroom.

Sheen Court is one of the area's most distinguished Art Deco developments, renowned for its graceful architecture and well-kept communal grounds. Residents benefit from on-site parking, communal gardens and balconies, and are positioned just one mile from the heart of historic Richmond, with its exceptional boutiques, dining, Richmond Green and the riverside.

Only a fifteen-minute stroll away lies the magnificent Richmond Park. Spanning 2,500 acres, it offers breath taking landscapes, cycling and walking routes, and is home to the famous roaming deer, ancient woodland trails, the Isabella Plantation, horse-riding schools and The Royal Ballet School. Secure cycle storage is conveniently available within Sheen Court.

Quietly positioned towards the rear of the development, the apartment enjoys open views across neighbouring allotments.

CHESTERTONS



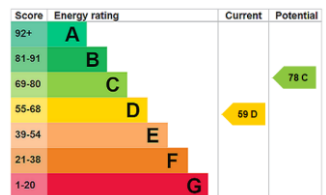
Sheen Court

Richmond, TW10

- First Floor
- Communal Balcony
- No Onward Chain
- Share of Freehold
- Bike Storage
- Off Street Car Parking
- Double Glazed



Tenure: Share of Freehold 122 years 8 months
Service Charge: £1700
Ground Rent: £0
Local Authority: London Borough of Richmond upon Thames
Council Tax Band: D

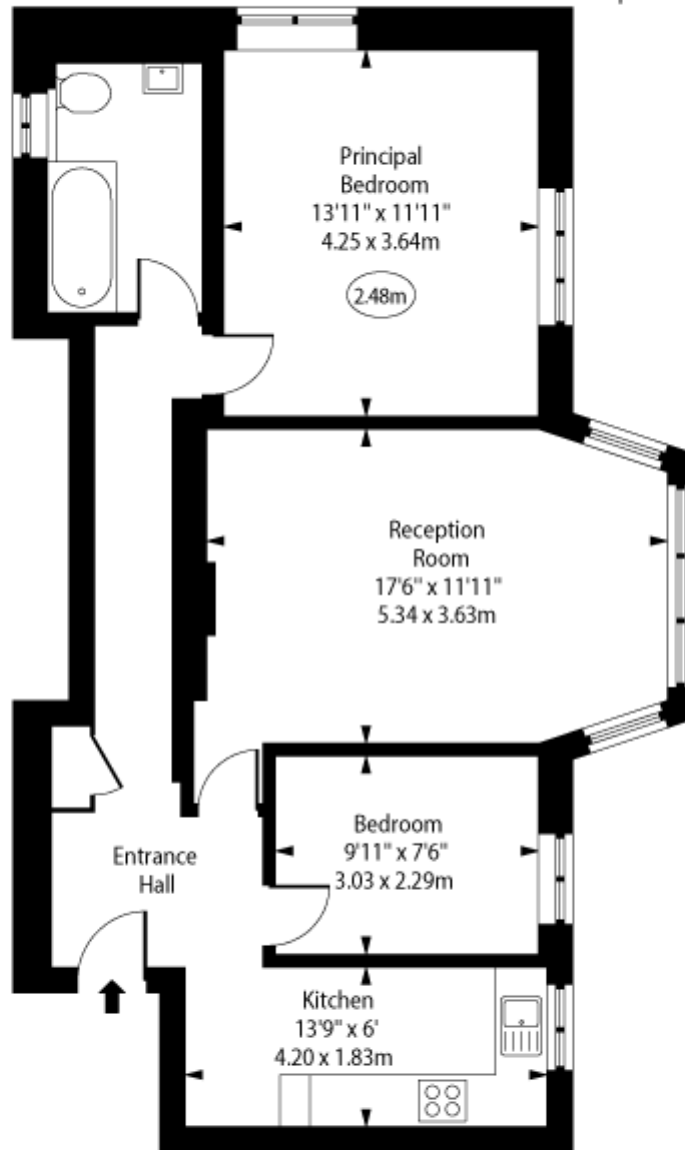


Chestertons East Sheen Sales

254A Upper Richmond Road West
East Sheen
London
SW14 8AG
sheen@chestertons.co.uk
020 8104 0580
chestertons.co.uk

Sheen Court,
Richmond, TW10

○ - Ceiling Height



First Floor

Approx Gross Internal Area 754 Sq Ft - 70.05 Sq M

Every attempt has been made to ensure the accuracy of the floor plan shown. However, all measurements, fixtures, fittings, and data shown are approximate interpretations and for illustrative purposes only. Measured according to the RICS. Not To Scale.

www.goldlens.co.uk

Ref. No. 029944W1

