

Walham Green Court, SW6

£550,000

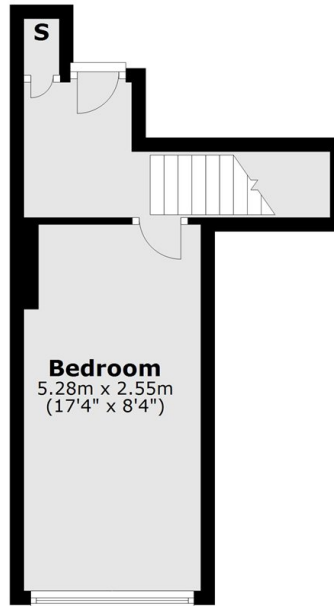
An immaculately refurbished, bright and spacious two bedroom split-level maisonette, ideally positioned on the Chelsea/Fulham border within the sought after Moore Park Estate. The property benefits from its own private entrance and a secluded patio, offering a rare sense of privacy. The generous kitchen and dining area is fitted with fully integrated appliances and flows seamlessly into a spacious living room; creating an excellent layout for both everyday living and entertaining.

Ideally located moments from the transport links, amenities, and restaurants of Fulham Broadway, with Chelsea and Parsons Green both within easy walking distance. The green open spaces of Eel Brook Common are also just a short stroll away.

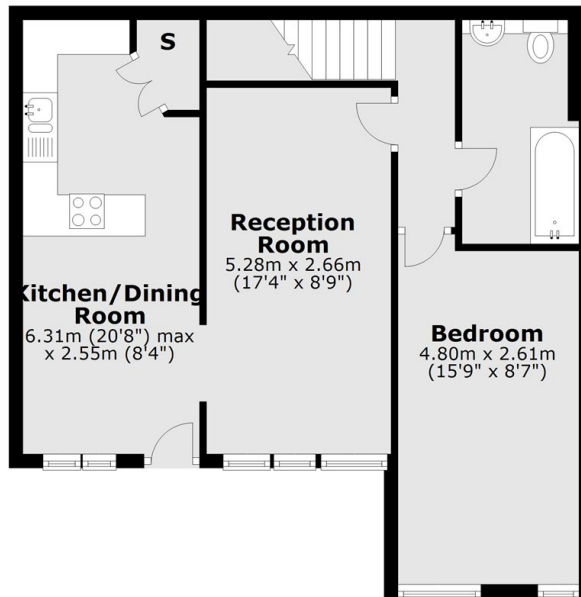
Features

- Two Double Bedrooms
- Long Lease
- Abundance Of Living Space
- Chain Free
- Private Entrance
- Secluded Patio

Walham Green Court, London, SW6



Ground Floor



Lower Ground Floor

Total area: approx. 75.0 sq. metres (806.9 sq. feet)