



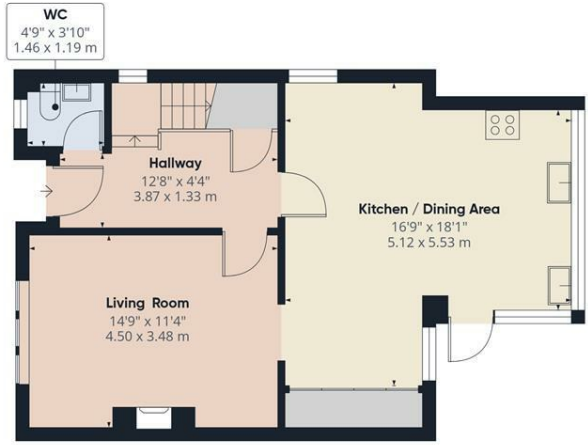
## Miriams Lea Dale Road North, Matlock DE4 2HY £1,190 Per Calendar Month

We are delighted to bring this superb three bedroom detached home to the rental market. Boasting beautiful views of the open countryside and private off road parking, this property perfectly blends rural charm with modern convenience.

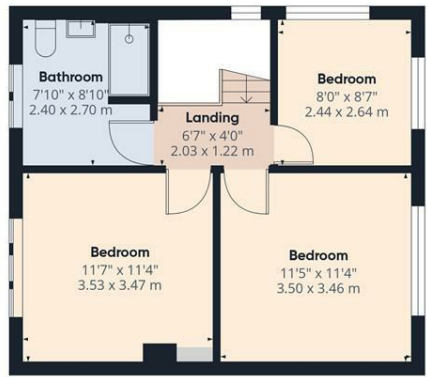
Location is everything, and this home sits proudly in a popular Derbyshire village. Local shops, cafes, and amenities are conveniently situated in the surrounding neighbourhood, with the excellent market towns of Bakewell and Matlock just a short drive away. It is also ideally positioned within the catchment area for highly regarded local schools.

Inside, the home has undergone a complete refresh, featuring full redecoration and plush new carpets throughout. The fully double glazed and gas centrally heated accommodation includes an entrance hallway with a WC, a cozy lounge centered around a lovely feature fireplace, and a spacious open plan kitchen/dining room with handy extra storage. Upstairs, you will find a generous master bedroom, two additional well proportioned bedrooms, and a beautiful, newly fitted family bathroom.

This property is offered unfurnished. Please note that smoking is not permitted within the property. The Energy Efficiency Rating is E and the Council Tax Band is C.



Ground Floor



Floor 1

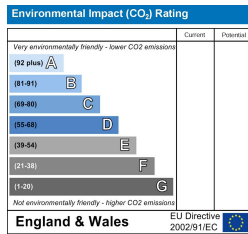
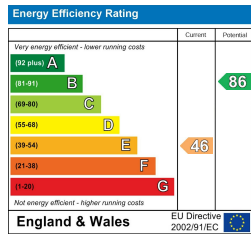


Approximate total area<sup>m</sup>  
988 ft<sup>2</sup>  
91.9 m<sup>2</sup>

(1) Excluding balconies and terraces

Calculations reference the RICS IPMS 3C standard. Measurements are approximate and not to scale. This floor plan is intended for illustration only.

GIRAFFE360



Banner Cross  
Hathersage  
Bakewell  
Matlock  
www.saxtonmee.co.uk

949-951 Ecclesall Road, Sheffield S11 8TN  
3 Bank View, Main Road, Hathersage S32 1BB  
Matlock Street, Bakewell DE45 1EE  
27 Causeway Lane, Matlock, DE4 3AR

T: 0114 268 3241  
T: 01433 650009  
T: 01629 815307  
T: 01629 828250

E: bannercross@saxtonmee.co.uk  
E: hathersage@saxtonmee.co.uk  
E: bakewell@saxtonmee.co.uk  
E: matlock@saxtonmee.co.uk