



CHAPTER HOUSE, WC2B

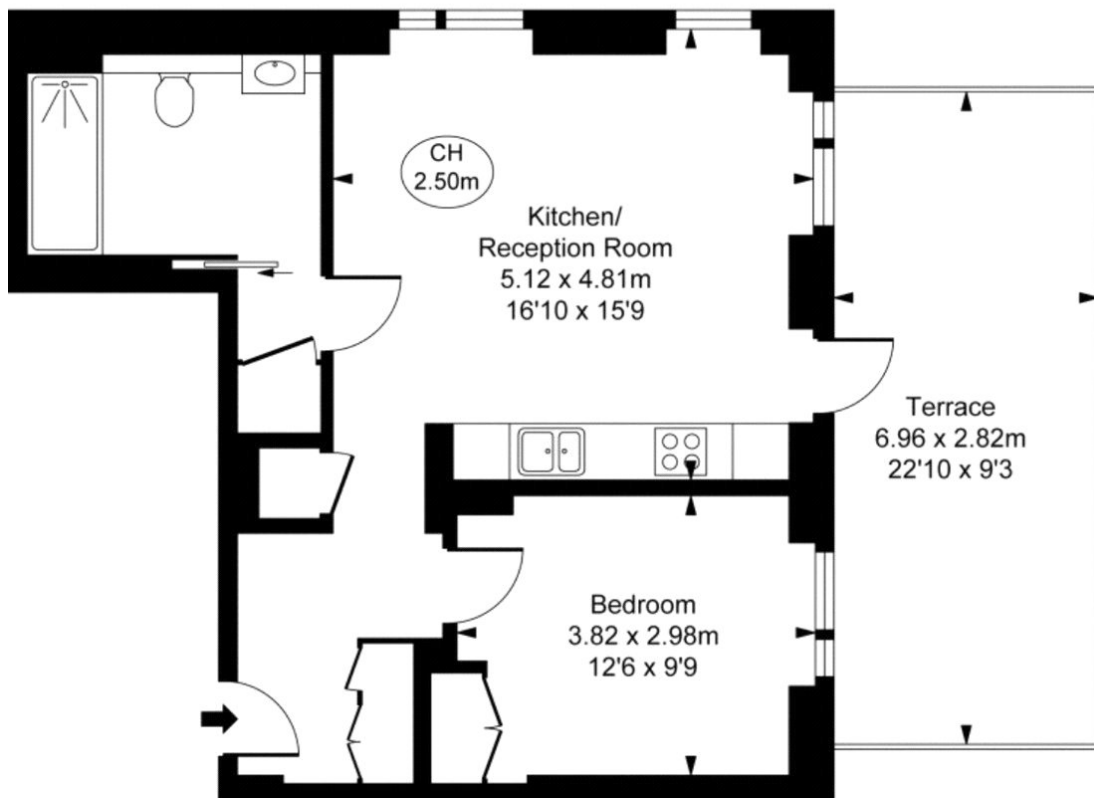
£3,900 pcm

Stunning furnished one bed apartment with a modern integrated kitchen, smoked oak flooring and a rare private terrace. Part of Chapter House a stylish Victorian building in the heart of Covent Garden, with concierge service and a private gym.

- First Floor Flat
- One Bedroom
- Open Plan
- Integrated Kitchen
- Private Gym & Concierge
- Private Terrace

Chapter House,
Parker Street,
Covent Garden, WC2B
Approximate Gross Internal Area
52.02 sq m / 560 sq ft

(CH = Ceiling Heights)



First Floor

This plan is not to scale. It is for guidance and not for valuation purposes.
All measurements and areas are approximate only, and have been prepared in accordance with the current edition of the RICS Code of Measuring Practice.
© Fulham Performance

LiFE RESIDENTIAL

11 Flagstaff House, London,
SW8 2LZ

Sales: 020 7476 1408

Lettings: 020 7582 7989

Energy Rating: B. We aim to make our particulars both accurate and reliable. However they are not guaranteed; nor do they form part of an offer or contract. If you require clarification on any points then please contact us, especially if you're traveling some distance to view. Please note that appliances and heating systems have not been tested and therefore no warranties can be given as to their good working order.