

## Victoria Road, KT6

£525,000

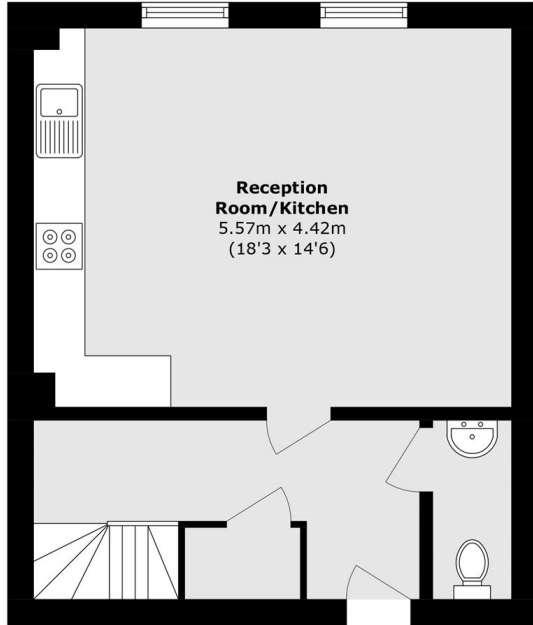
A spacious split level apartment with it's own front door functions rather like a semi detached property. There are two double bedrooms, two bathrooms and a large open plan kitchen/living/dining room and further benefits from secure underground parking.

Victoria Road runs through the heart of Surbiton, offering the mainline train station and selection of gastro pubs, excellent restaurants and local shops.

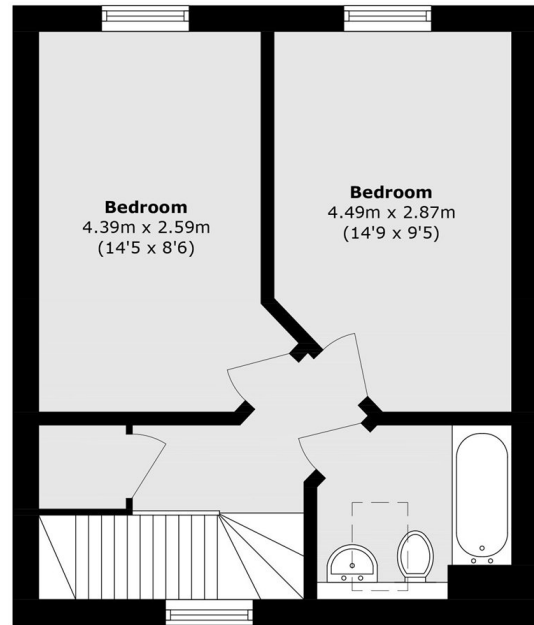
### Features

- Split Level
- Two Double Bedrooms
- Two Bathrooms
- Modern Finish
- Underground Parking
- Central Location

# Victoria Road, Surbiton, KT6



**First Floor**



**Second Floor**

Total area (approx.): 73.5 sq. m (791.1 sq. ft)