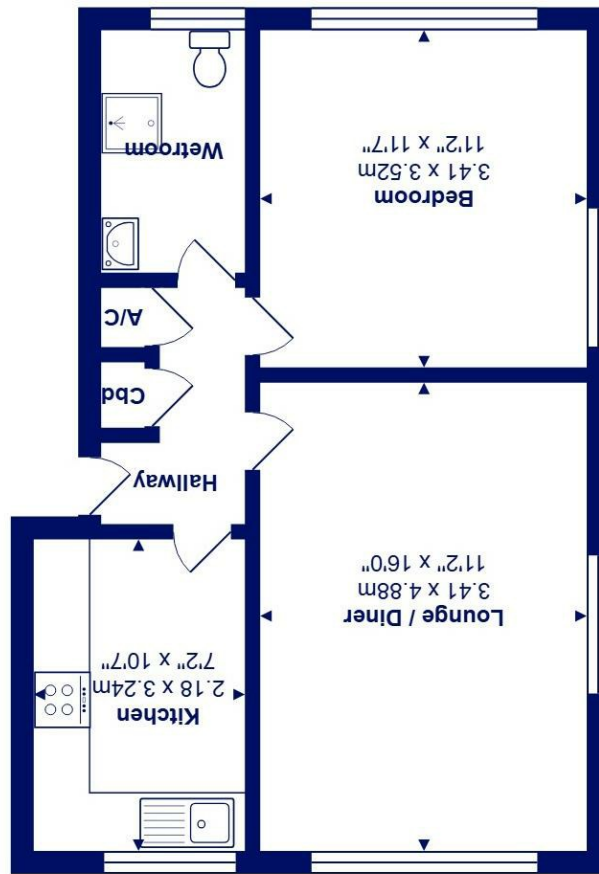




Total Area: 45.8 m² ... 493 ft²
All measurements are approximate and for display purposes only



First Floor



48 Bure Park, Friars Cliff, BH23 4EF *£225,000*

Mitchells
1963 — TODAY

Situated on this highly acclaimed development within a short stroll of the award winning Friars Cliff beaches and set amidst its own beautifully landscaped gardens and grounds is this purpose built first floor flat presented in very clean and tidy order throughout.

There is a good size double bedroom, a spacious reception room, a fitted kitchen and separate shower room. Bure Park is superbly situated meaning that the local shops are within just a short level walk and the historic Mudeford Quay with its excellent boating facilities just a little further on. An ideal retirement or second home proposition.

- First floor one bedroom apartment
- Good size wet room
- Spacious kitchen including white goods
- Bright and airy dual aspect sitting room
- Close to Christchurch amenities and local beaches
- Located in the well maintained Bure Park Development
- Communal washing lines throughout development,
- Easy access to transport links
- Share of Freehold, Maintenance £1303.00 p/a Buildings Insurance £280 p/a
- Viewing highly recommended

EPC Rating Band: D
Council Tax Band: B
Share of Freehold

Successful buyers will be required to complete online identity checks provided by Lifetime Legal. The cost of these checks is £45 inc. VAT per purchase which is paid in advance, directly to Lifetime Legal. This check verifies your identity in line with our obligations as stipulated by our regulatory body, HMRC

