

Highfield Road

Isleworth, TW7

£700,000

Situated on a prime residential road, ideally located for access to a number of excellent local schools, Isleworth train station & Osterley tube station, this beautifully presented three bedroom family home is offered to the market with no forward chain.

Council Tax band: D

Tenure: Freehold

EPC Energy Efficiency Rating: C

EPC Environmental Impact Rating:

- No Forward Chain
- Beautifully Presented
- Large Rear Garden
- Potential to Extend Further (STPP)
- Modern Fitted Kitchen
- Downstairs WC
- Close to Public Transport
- Summerhouse



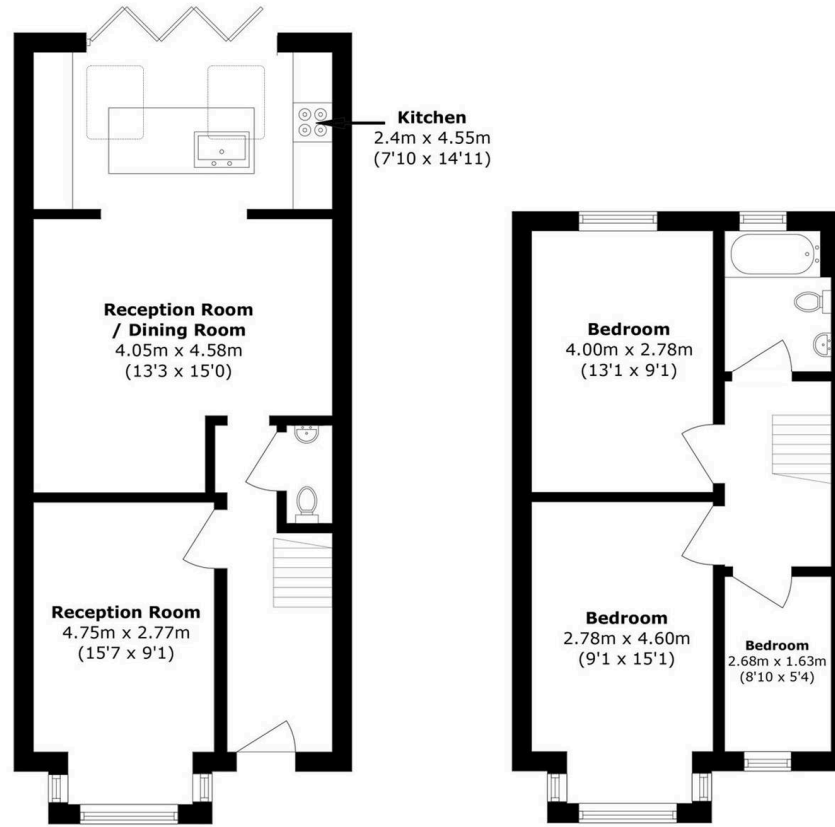
SCAN HERE
FOR
PROPERTY
DETAILS





Highfield Road, TW7

Approximate Internal Area = 88.6sq m / 953.69sq ft
For illustrative purposes only NOT TO SCALE



Ground Floor

First Floor

This Floorplan is been produced in accordance with RICS Property Measurements Standards (IPMS2 Residential) Floorplan was produced for Oakhill.
. Produced by HPS

