



# NEWPORT

Guide price **£260,000**



# 100 ALMA STREET

Newport, NP20 2EQ



Three reception rooms  
Close to local shops and amenities  
Ideal family home or first time purchase

Situated on Alma Street in Newport, this three bedroom terraced property offers an excellent opportunity for families seeking a well-located and versatile home. The property provides generous living accommodation throughout, including multiple reception areas and a spacious kitchen, ideal for both everyday living and entertaining. Upstairs, three well-proportioned bedrooms are complemented by a family bathroom, with an additional loft space adding further flexibility for a home office or guest room.

Perfectly positioned, the property is within close proximity to well-regarded primary and secondary schools, making it an ideal choice for growing families. It is also just a stone's throw from Newport city centre, offering easy access to a wide range of shops, pubs, restaurants, and everyday amenities, as well as excellent transport links.



Guide price  
£260,000



### KEY FEATURES

- Three bedrooms
- Close to M4 corridor
- Downstairs WC
- Three reception rooms
- Close to local shops and amenities
- Loft Conversion



# STEP INSIDE



As you step inside, you are welcomed by a bright and spacious entrance hall, providing access to the ground floor rooms and setting the tone for the rest of the home.

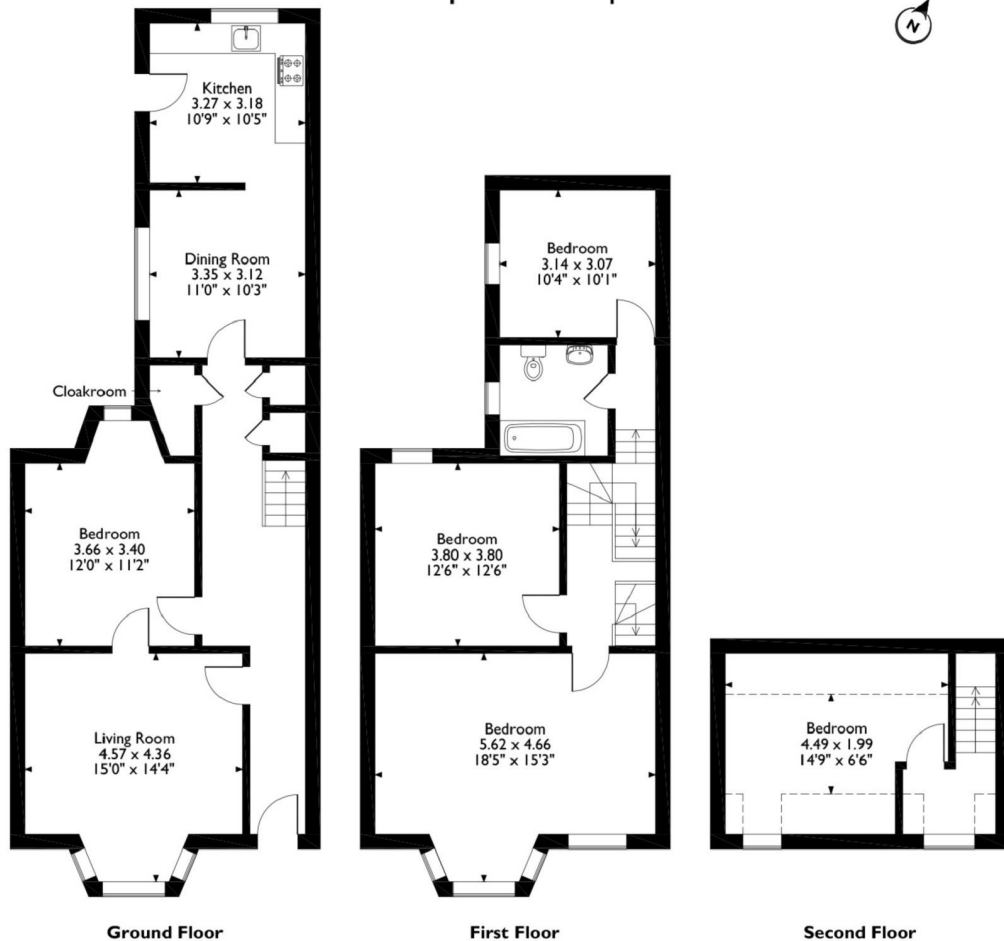
To the front, a generous living room features a bay window, allowing natural light to pour in and creating a warm, inviting atmosphere.

Adjacent, a separate reception room offers excellent flexibility and could be used as a formal dining room, snug, or home office.

Continuing through, the dining room sits centrally and provides a great space for entertaining, flowing seamlessly into the well-appointed kitchen at the rear.

The kitchen offers ample worktop and storage space, along with direct access to the garden. A convenient ground floor WC completes this level.

100, Street: Alma Street, Newport, Newport  
Approximate Gross Internal Area  
145 Sq M/1561 Sq Ft



**Ground Floor** **First Floor** **Second Floor**  
Please note that the location of doors, windows and other items are approximate and this floorplan is to be used for illustrative purposes only. Unauthorized reproduction is prohibited.

Upstairs, the first floor hosts three well-proportioned bedrooms, including a spacious principal bedroom, along with a family bathroom.

Stairs rise again to a converted loft space, offering additional versatility, ideal as a home office, hobby room, or occasional guest area, completing this well-laid-out and adaptable home.

# STEP OUTSIDE



To the front, this mid-terraced home showcases a traditional stone facade with decorative masonry and a classic bay window. A low-level brick wall encloses a small forecourt with mature shrubbery, providing natural curb appeal. The rear garden has great potential.

## INFORMATION

Postcode: NP20 2EQ  
Tenure: Freehold  
Tax Band: C  
Heating: Gas  
Drainage: Mains  
EPC: TBC



## DIRECTIONS

What3words: ///empty.picked.ruled



25 Bridge Street, Usk, NP15 1BQ  
01633 449884  
newport@archerandco.com  
[www.archerandco.com](http://www.archerandco.com)



All measurements are approximate and quoted in imperial with metric equivalents and for general guidance only and whilst every attempt has been made to ensure accuracy, they must not be relied on. The fixtures, fittings and appliances referred to have not been tested and therefore no guarantee can be given that they are in working order. Floorplans and photographs are reproduced for general information and it must not be inferred that any item shown is included with the property.