



[www.knights.uk.com](http://www.knights.uk.com)

*Holton Road*

CARDIFF

VALE

CAERPHILLY

BRISTOL





Comments by Jon Hooper-Nash



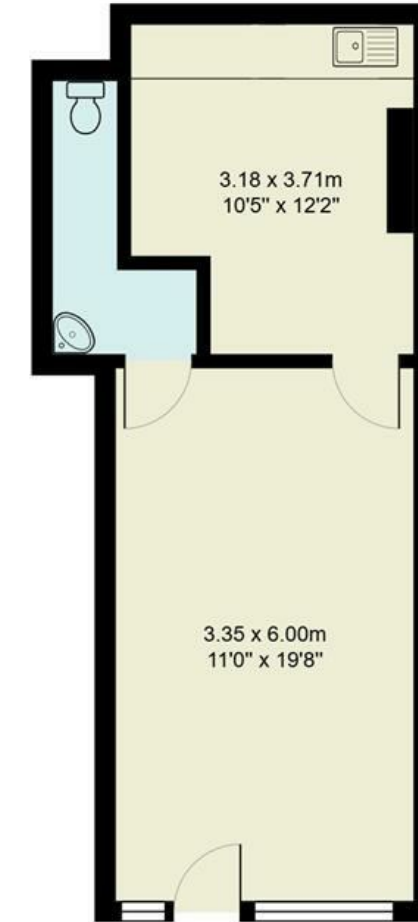
**Property Specialist**

**Jon Hooper-Nash**

Director

jon@jeffreycross.co.uk

## Holton Road, Barry



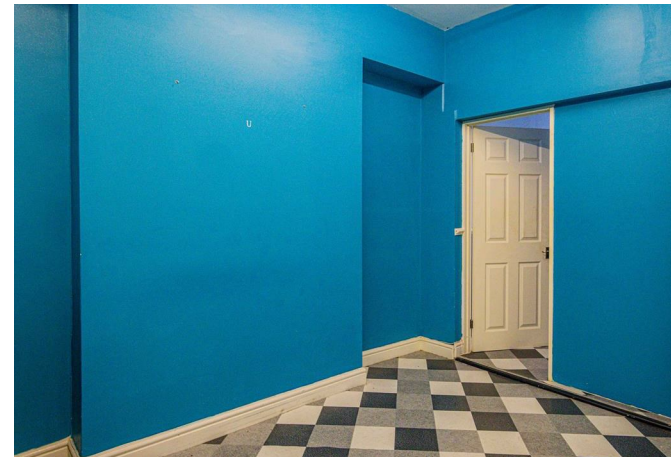
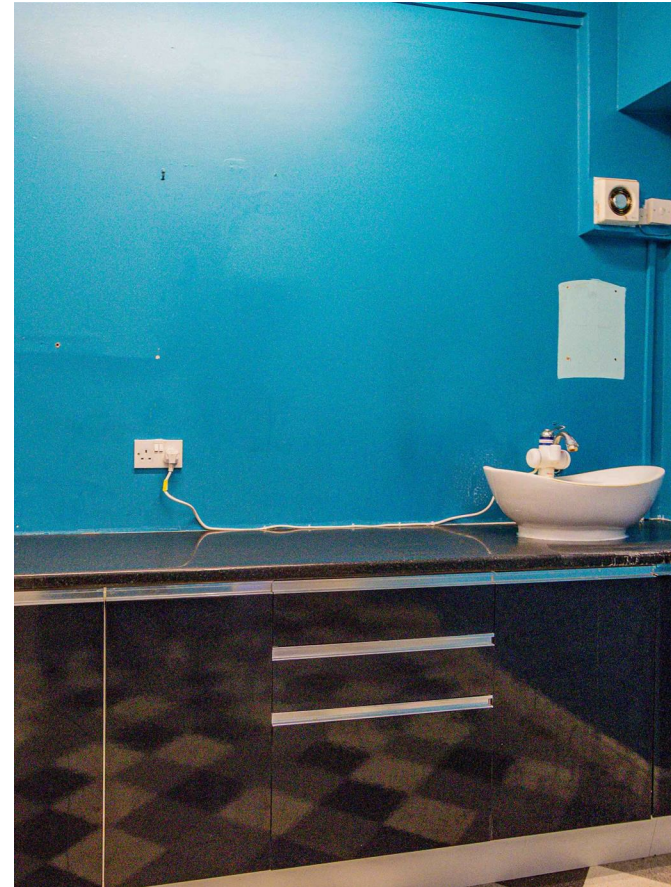
Total Area: 35.2 m<sup>2</sup> ... 379 ft<sup>2</sup>

All measurements are approximate and for display purposes only

*Excellent ground-floor retail unit in the heart of Barry.*

Comments by the Homeowner





# Holton Road

, Barry, CF63 4HR

PCM

£6,000 PCM



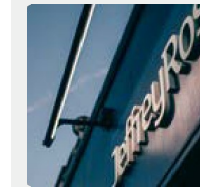
0 Bedroom(s)



1 Bathroom(s)



379.00 sq ft



Contact our  
**Knights Barry Branch**

01446 700222

Knights are pleased to offer a ground-floor commercial unit at the residential end of Holton Road. Offering shop frontage with roller shutter and circa 379 square foot of floor space, it is an excellent opportunity in the heart of Barry.

For more information, please call Jon in our Barry Office on 01446 700222.





CARDIFF

VALE

CAERPHILLY

BRISTOL



Energy Efficiency Rating

	Current	Potential
Very energy efficient - lower running costs		
(92 plus) <b>A</b>		
(81-91) <b>B</b>		
(69-80) <b>C</b>		
(55-68) <b>D</b>		
(39-54) <b>E</b>		
(21-38) <b>F</b>		
(1-20) <b>G</b>		
Not energy efficient - higher running costs		

England & Wales

EU Directive  
2002/91/EC

