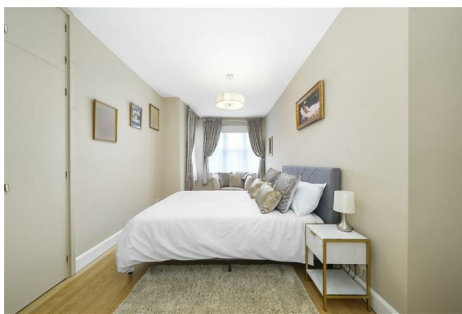


PARKER JAMES

ESTATES

Established since 1995



30 Floral Street London WC2E 9DP

- Available immediately
- Fourth floor
- Porter
- Student friendly
- Two bathrooms
- Furnished
- Lift
- Heart of Covent Garden
- Two double bedrooms
- Covent Garden station one minutes walk

£4,000 Per Month

30 Floral Street

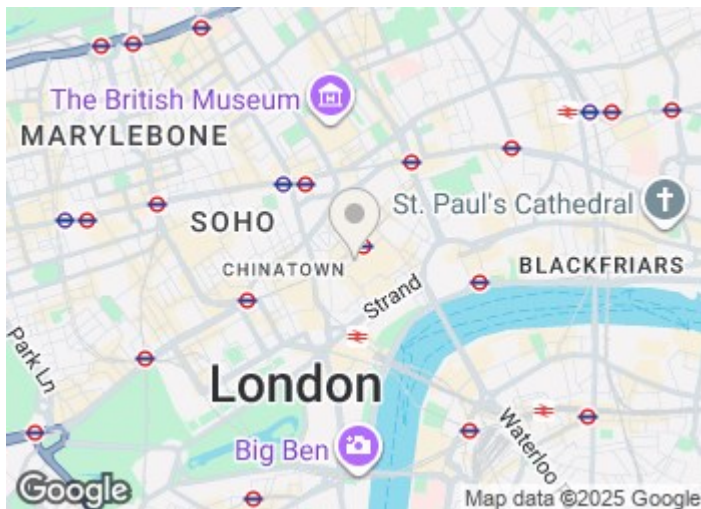
London WC2E 9DP



Available immediately on a furnished basis is this extremely well presented fourth floor flat with lift and porter in the heart of Covent Garden.

The tastefully furnished 77sqm property, which can be found on pretty Floral Street a pedestrianised cobbled street which runs parallel with Long Acre, briefly comprises a dual aspect reception room with ample space for dining, fully fitted kitchen with integrated appliances including a dishwasher, two generously sized double bedrooms with the main bedroom benefitting from a fully tiled ensuite shower room and fitted wardrobes and a further fully tiled bathroom off the central hallway.

Floral Street is within a few minutes walk of Covent Garden (Piccadilly line) and Leicester Square (Northern and Piccadilly) stations, bars, highly rated restaurants and some of the West End's best known cultural attractions.



[Directions](#)





Floor Plan

These particulars, whilst believed to be accurate are set out as a general outline only for guidance and do not constitute any part of an offer or contract. Intending purchasers should not rely on them as statements of representation of fact, but must satisfy themselves by inspection or otherwise as to their accuracy. No person in this firms employment has the authority to make or give any representation or warranty in respect of the property.

