



**Durley Avenue, Pinner – HA5 1JJ**  
Offers In Excess £650,000 | Freehold

**Lr** **LAWRENCE RAND**





## Key Features & Description

- Four bedroom terraced house
- Driveway for two cars
- Conveniently located near Pinner High School and Cannon Lane School.
- Excellent public transport links
- Private well-maintained rear garden

This well-maintained four-bedroom terraced home is situated in a sought-after residential area close to the High Streets of Pinner and Eastcote. It is conveniently positioned for transport links, local amenities, and highly regarded schools including Cannon Lane School and Pinner High School, making it ideal for families.

Arranged over three floors, the property offers bright, well-proportioned accommodation. The ground floor features a welcoming hallway, a spacious bay-fronted reception room, and an open-plan kitchen/dining room to the rear with direct access to the garden — perfect for both everyday living and entertaining.

The first floor comprises two double bedrooms with fitted wardrobes, a single bedroom suitable as a study or nursery, and a modern family bathroom. The second floor hosts a generous principal bedroom with built-in storage and a contemporary en-suite shower room.

Further benefits include a ground floor guest WC and a well-maintained rear garden with patio and lawn.

**Presented with care by Lawrence Rand - helping you find the place you'll love to call home.**







## Nearest Stations

Rayners Lane Station 0.6miles

Eastcote Station 0.8miles

North Harrow Station 0.8miles

## Verified Material

Council Tax band: E

EPC Energy Efficiency Rating: C

## Suppliers:

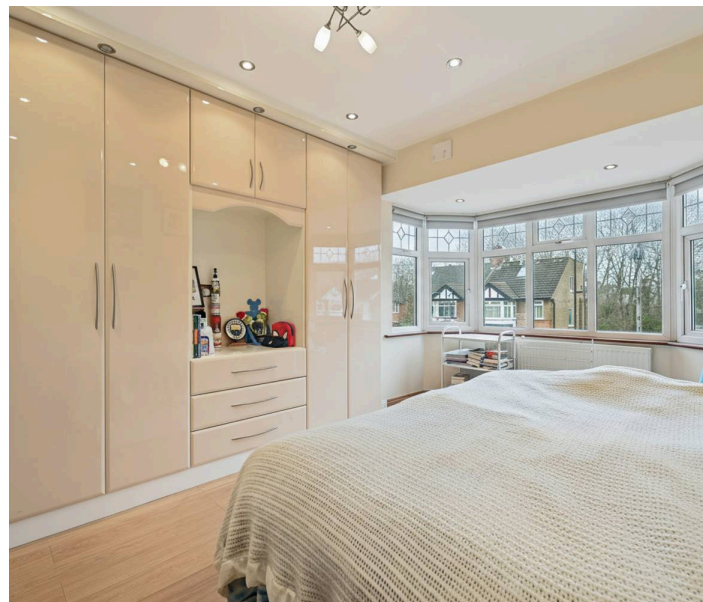
Electricity supply: Mains, Water supply: Mains  
water, Sewerage: Mains

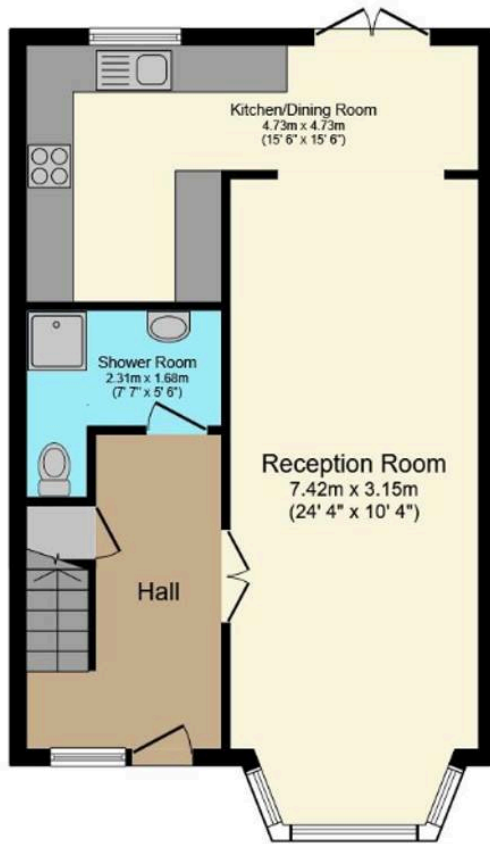
Heating: Gas central heating

## Broadband & mobile coverage:

Broadband: FTTP (Fibre to the Premises)

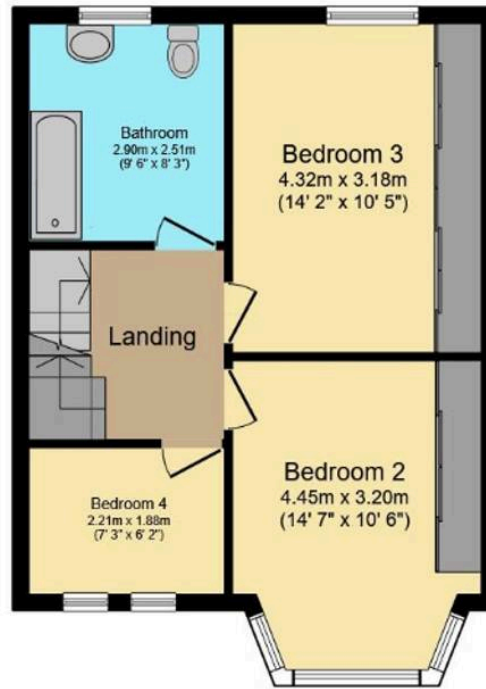
Mobile coverage: O2 - Excellent, Vodafone -  
Excellent, Three - Excellent, EE - Excellent





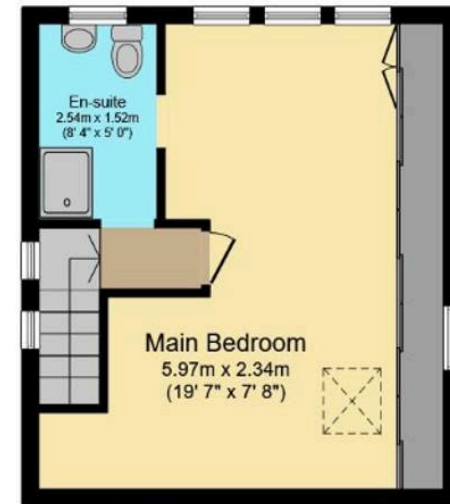
### Ground Floor

Floor area 54.6 sq.m. (588 sq.ft.)



### First Floor

Floor area 44.7 sq.m. (481 sq.ft.)



### Second Floor

Floor area 31.0 sq.m. (334 sq.ft.)

Total floor area: 130.3 sq.m. (1,403 sq.ft.)

## Lawrence Rand

51 Victoria Road, Ruislip - HA4 9BH

01895 632211

[Sales@lawrence-rand.co.uk](mailto:Sales@lawrence-rand.co.uk)

[www.lawrence-rand.co.uk/](http://www.lawrence-rand.co.uk/)

Lawrence Rand Limited has made every reasonable effort to ensure the accuracy of the information provided. However, we accept no responsibility for errors, omissions, or misstatements. All measurements, distances, and descriptions are approximate and for guidance only. Prospective purchasers or tenants must verify all details independently. Some images may include AI-generated virtual staging to illustrate the potential of the property and are for visual guidance only. No warranty is given or implied, and these particulars do not form part of any offer or contract. Lawrence Rand reserves the right to amend or withdraw any property without notice.