



London Road, TW1

£350,000

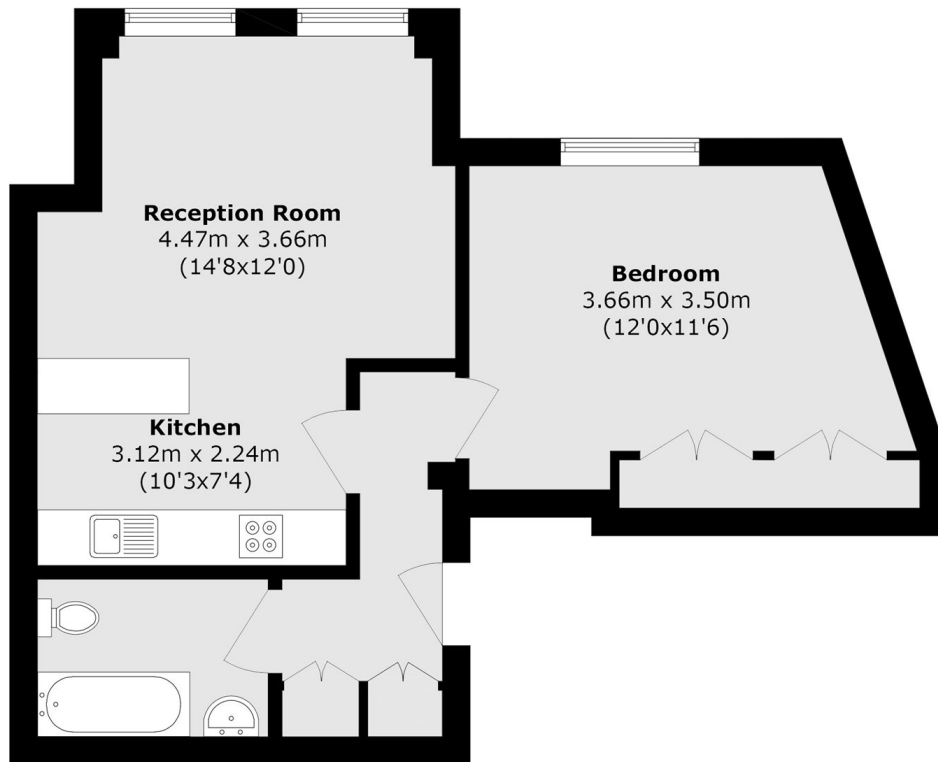
This beautifully presented contemporary top floor apartment is ideally located in the heart of Twickenham town centre. Featuring one double bedroom, ample open kitchen / living space and lift access, the property is a perfect first time purchase or investment.

Fraser House is located on London Road in Twickenham town centre, with its shops and restaurants, the River Thames and local parks all within easy reach. Twickenham mainline station with its fast links to London Waterloo is just moments away.

Features

- One Double Bedroom
- Central Location
- Close To Twickenham Station
- Modern Development
- Great Condition
- Lift Service

London Road, Twickenham, TW1



Total area (approx.): 48.6 sq. m (523.1 sq. ft)