



## 4 Scholars Corner, 26 Arnolds Way, Oxford, OX2 9JB

£1,900 PCM - 8th July 2026

- Duplex apartment
- Two double bedrooms
- Parking for 1 car
- Mains gas electricity and water
- Unfurnished
- Two ensuite bathrooms
- EPC rating B
- Integrated appliances
- Gas CH
- Council Tax banding C

## 4 Scholars Corner, Oxford OX2 9JB

Located within walking distance of Cumnor Hill with regular buses to the City Centre and train station, a two bedroom, two bathroom duplex apartment located on the first and second floors of this recently built development. Unfurnished including integrated kitchen appliances. Gas CH. Parking for 1 car  
PLEASE NOTE: PHOTOS TAKEN PRIOR TO CURRENT TENANCY



Council Tax Band: C

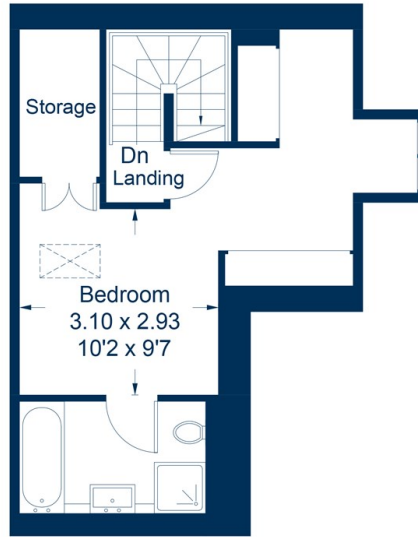


Located within walking distance of Cumnor Hill with regular buses to the City Centre and train station, a two bedroom, two bathroom duplex apartment located on the first and second floors of this brand new development. Unfurnished. Top floor - Double bedroom with dressing area and fitted wardrobes - ensuite bathroom, First Floor - Double bedroom with fitted wardrobes and ensuite shower room, Open plan style Living/Dining room/Kitchen - fully fitted including integrated appliances. Gas CH. Parking for 1 car

Approximate Gross Internal Area  
 First Floor = 45.4 sq m / 489 sq ft  
 Second Floor = 32.9 sq m / 354 sq ft  
 Total = 78.3 sq m / 843 sq ft



**First Floor**



**Second Floor**

This plan is for layout guidance only. Not drawn to scale unless stated. Windows and door openings are approximate. Whilst every care is taken in the preparation of this plan, please check all dimensions, shapes and compass bearings before making any decisions reliant upon them.  
 © CJ Property Marketing Ltd



**Directions**

**Viewings**

Viewings by arrangement only. Call 01865 515900 to make an appointment.

**Council Tax Band**

C

Energy Efficiency Rating		
	Current	Potential
Very energy efficient - lower running costs		
(92 plus) <b>A</b>		
(81-91) <b>B</b>	84	84
(69-80) <b>C</b>		
(55-68) <b>D</b>		
(39-54) <b>E</b>		
(21-38) <b>F</b>		
(1-20) <b>G</b>		
Not energy efficient - higher running costs		
<b>England &amp; Wales</b>	EU Directive 2002/91/EC	