

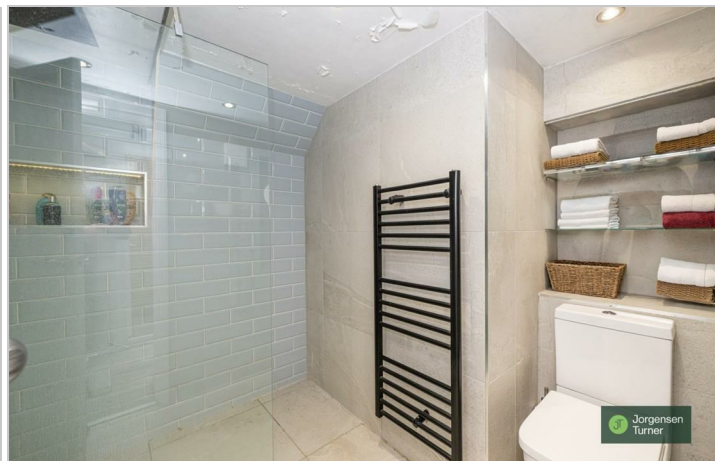
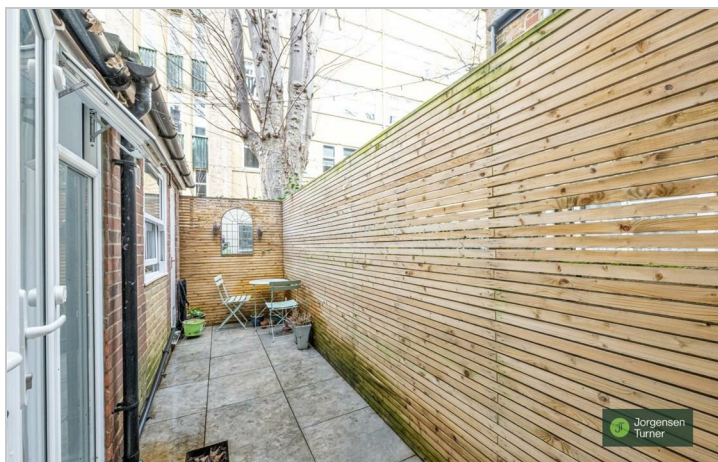
Minford Gardens, London,
W14

Offers In Excess Of £600,000



Minford Gardens, London, W14

Offers In Excess Of £600,000



Summary Description

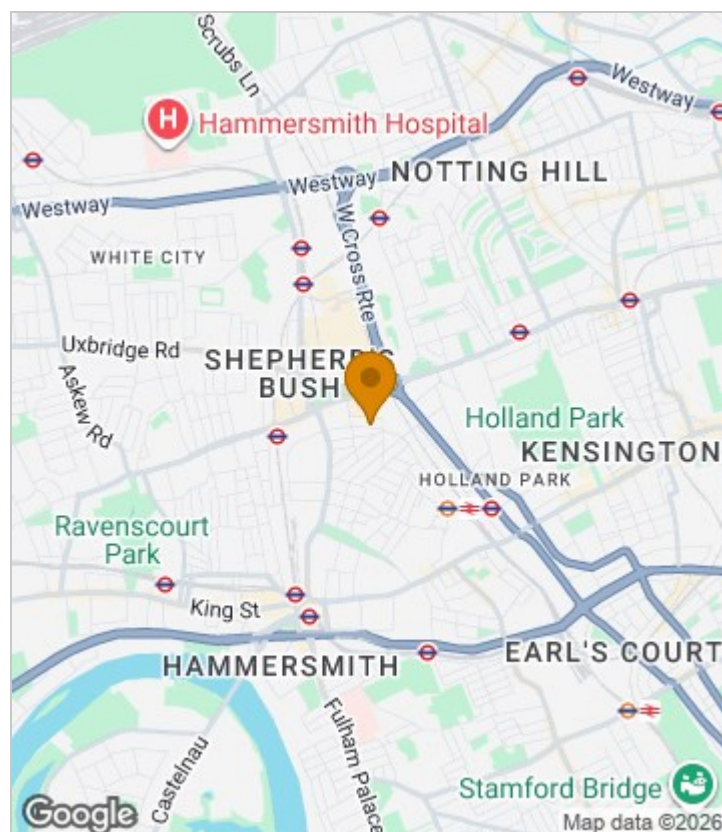
Minford Gardens W14. A centrally located two bedroom garden flat. Internally the property offers a spacious reception room, fully fitted kitchen, two double bedrooms and a modern shower room. Externally there's an attractive private patio garden. The property benefits from being offered chain free and with a Share of Freehold.

Minford Gardens is ideally situated between Kensington Olympia, Shepherds Bush and Brook Green. The location has a fantastic choice of shops, bars and restaurants at either Brook Green or Westfield Centre at White City. Transport wise the location is extremely well served with the Shepherd's Bush Central Line, Overland at Shepherds Bush and Kensington Olympia (Circle and District Lines). The lovely open spaces of Holland Park or Brook Green are also only a short walk away.

Share of Freehold, Service charge TBC, GR NA

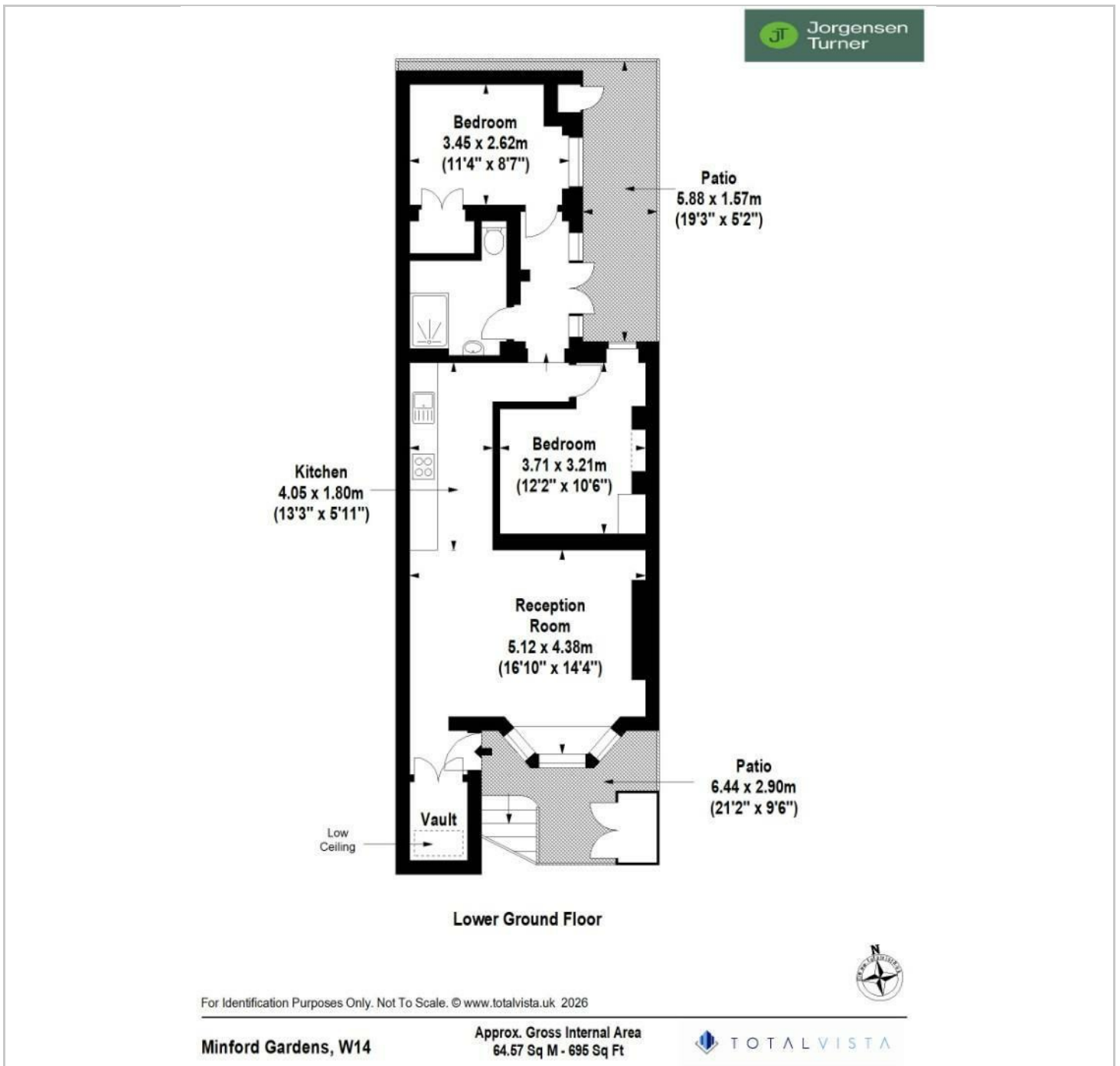
Council Tax Band C

Area Map

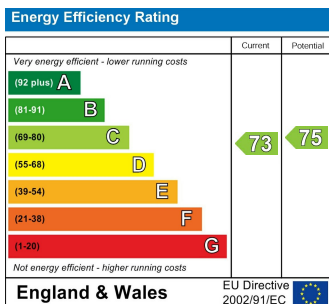




Floor Plan



Energy Efficiency Graph



Viewing

Please contact our Sales SB Office on 0208 740 8740 if you wish to arrange a viewing appointment for this property or require further information.

- TWO BEDROOMS
- PRIVATE PATIO GARDEN
- SPACIOUS RECEPTION ROOM
- CHAIN FREE
- SHARE OF FREEHOLD
- MOMENTS FROM WESTFIELD WHITE CITY
- CLOSE TO BROOK GREEN
- CENTRAL LINE TUBE

For further information contact:

Sales SB, 234 Uxbridge Road, Shepherds Bush, London, W12 7JD

Tel: 0208 740 8740 Email: enquiries@jorgensenturner.com

<https://www.jorgensenturner.com/>

Disclaimer

These particulars, whilst believed to be accurate are set out as a general outline only for guidance and do not constitute any part of an offer or contract. Intending purchasers should not rely on them as statements of representation of fact, but must satisfy themselves by inspection or otherwise as to their accuracy. No person in this firm's employment has the authority to make or give any representation or warranty in respect of the property.