

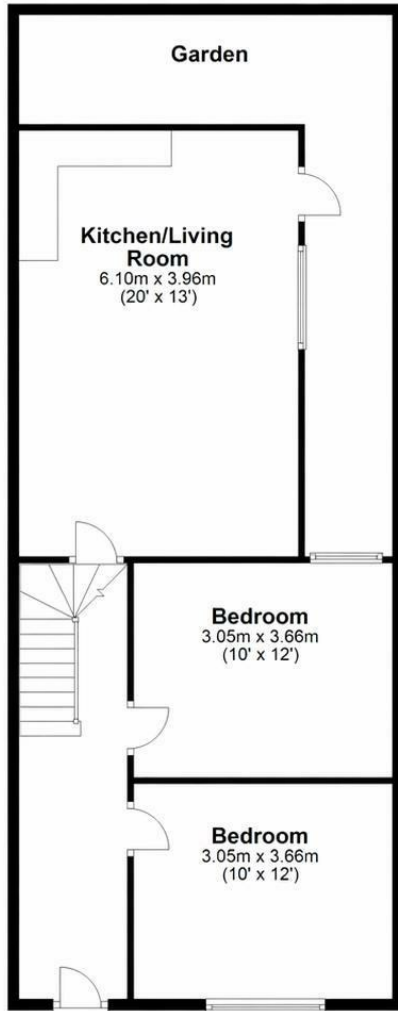


**3 Bed
House - Terraced
located in**

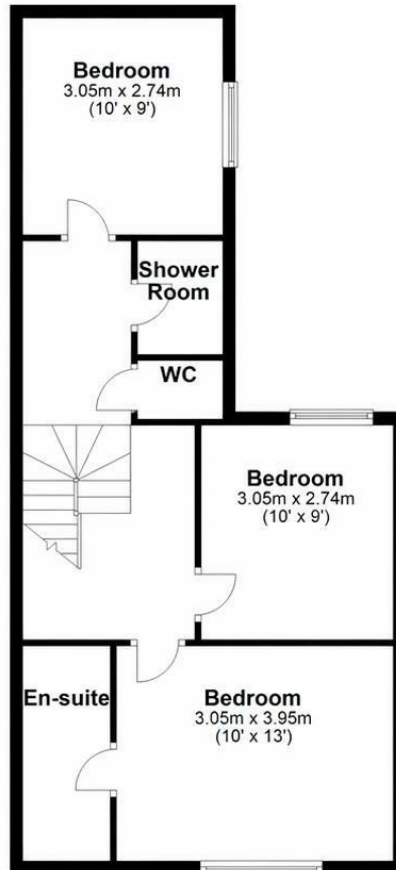
£675,000



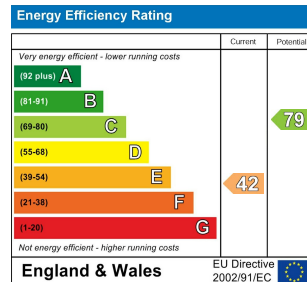
Ground Floor
Approx. 73.9 sq. metres (795.8 sq. feet)



First Floor
Approx. 48.9 sq. metres (526.4 sq. feet)



Total area: approx. 122.8 sq. metres (1322.2 sq. feet)



DIRECTIONS

CONTACT

Kendrick Property Services - Brighton
10-12 Lewes Road
Brighton
East Sussex
BN2 3HP

E:
sales@kendrickpropertyservices.co.uk
T: 01273 600162
www.kendrickpropertyservices.co.uk

