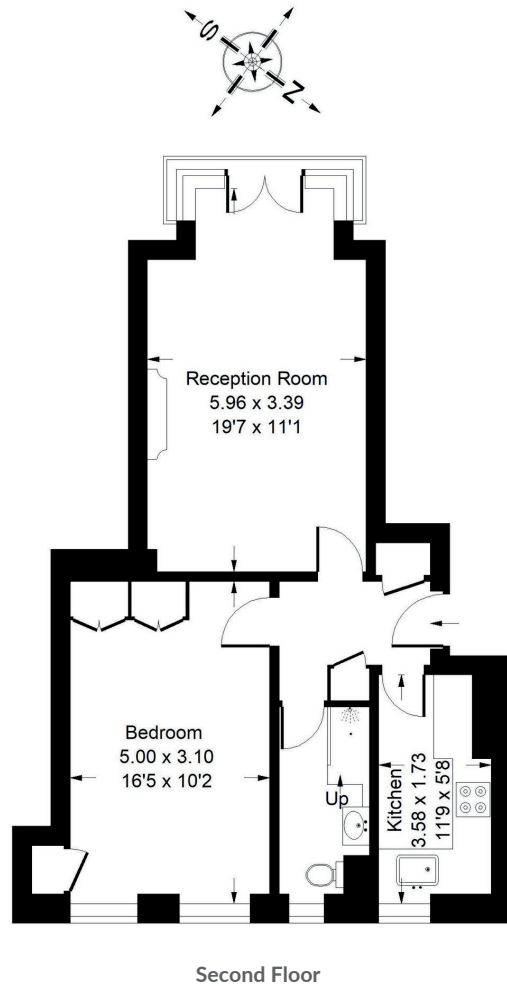




HOLLAND PARK AVENUE, W11

Approx. Gross Internal Area
= 52.2 sq m / 562 sq ft



Whilst every attempt has been made to ensure the accuracy of the floor plan, measurements are approximate and not to scale. No guarantee is given on the total square footage of the property quoted on the plan. Figures given are for guidance. Plan is for illustration purposes only, not to be used for valuations.



Holland Park Avenue, W11 - Leasehold

Local Authority - Royal Borough of Kensington & Chelsea

A bright flat in this superbly located block between Notting Hill and Holland Park. Arranged on the second floor (with lift) this one bedroom flat is well-presented and would be an ideal pied-a-terre or investment. Linton House provides, a porter, communal roof, inclusive heating and hot water. Linton House is situated on Holland Park Avenue and is very close to Notting Hill Gate with its many excellent shops, restaurants and transport facilities.

- One Bedroom
- One Bathroom
- Communal Roof Terrace
- Large Reception
- EPC = C
- Council Tax Band = F