

****BRAND NEW****



305 CURZON WHARF, GLASSWATER LOCKS 3 PITT STREET, BIRMINGHAM. B4

£1,150 PCM

FEATURES

- FULL INTERIOR DESIGN- RENT AS SEEN
- LUXURY DEVELOPMENT BY BERKELEY GROUP
- 2 JULIETTE BALCONIES
- CONCIERGE, GYM, CINEMA, GAMES ROOM & MORE
- 10 MINUTE WALK TO BULLRING / NEW STREET
- BRAND NEW- BE THE FIRST TO MOVE IN



1 Bedroom Apartment located in Birmingham

Welcome to this exquisite brand new apartment in the highly sought-after Creative Quarter of Birmingham, Belmont Row, B4. Be the very first to move in and enjoy a beautifully finished home with full interior design exactly as shown in the photos – stylish, modern, and ready to live in.

Spanning approximately 480 sq ft, this thoughtfully designed residence offers a bright and spacious reception area, a comfortable double bedroom, and a sleek contemporary bathroom. The elegant Juliette balconies provide picturesque, uninterrupted views while allowing natural light to flood the living space, creating a warm and inviting atmosphere throughout.

As part of a stunning new development, residents benefit from exceptional on-site amenities including a concierge service for added convenience and security, a fully equipped gym for an active lifestyle, dedicated co-working spaces, and a private library – ideal for professionals and students alike.

Set within a vibrant canalside community, this home offers the perfect balance between dynamic city living and peaceful waterside surroundings. With excellent transport links and easy access to Birmingham's shops, restaurants, and cultural attractions, everything you need is right on your doorstep.

Available now, this is a rare opportunity to secure a brand new, fully furnished and interior-designed apartment in one of Birmingham's most desirable locations. Don't miss your chance to make this stunning property at Glasswater Locks your new home.

Call us on

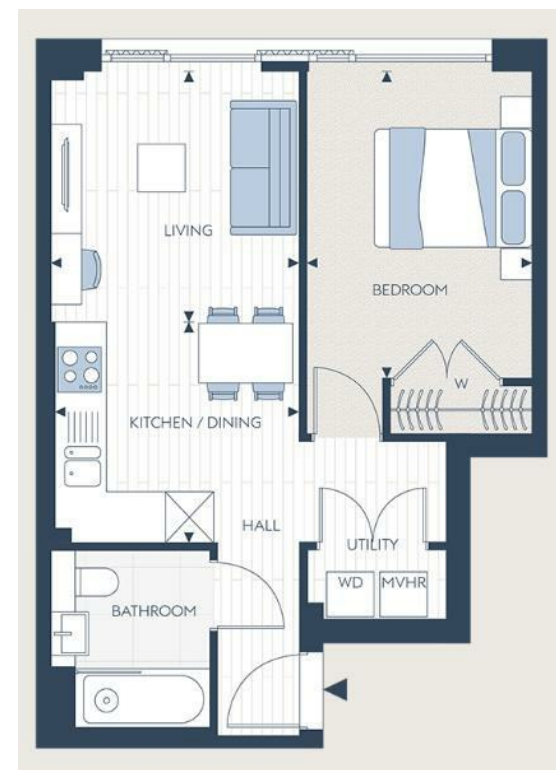
0121 667 0343

hello@swift-property.co.uk

www.swift-property.co.uk

Council Tax Band

B



Agents Note: Whilst every care has been taken to prepare these particulars, they are for guidance purposes only. All measurements are approximate and are for general guidance purposes only and whilst every care has been taken to ensure their accuracy, they should not be relied upon and potential buyers are advised to recheck the measurements.