

Frank Harris & Co.



Whitehall, Bloomsbury Square, WC1A

£850,000

A wonderful opportunity to acquire a spacious one bedroom apartment in prime Bloomsbury. Positioned within an impressive period building and benefiting from lift access and stunning views overlooking Bloomsbury Square, the accommodation boasts a generous reception/dining room with high ceilings and large windows overlooking the square, a separate kitchen, large bedroom with ample storage space and a bathroom with a bath.



Bloomsbury Square, is superbly located in prime Bloomsbury, a vibrant and culturally rich neighbourhood that exudes charm and sophistication, known for its elegant Georgian and Victorian architecture, Bloomsbury is home to a plethora of picturesque squares, including the iconic Bloomsbury Square and Russell Square. Holborn Underground Station (0.6 miles) provides access to the Central and Piccadilly lines. Russell Square Underground Station (0.4 miles) It is served by the Piccadilly line, offering direct links to major attractions and transportation hubs.

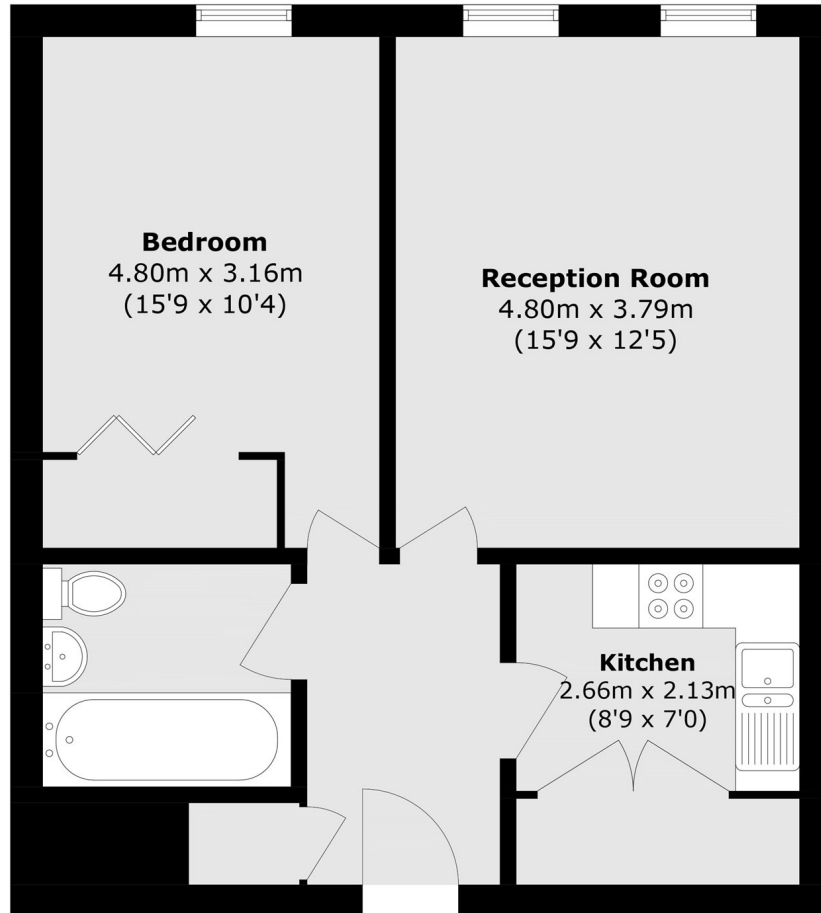
- Period building • Conceirge • Stunning views •
- Lift access • Garden square • Prime Bloomsbury •







Frank Harris & Co.



Third Floor

Total area (approx.): 56.5 sq. m (608.1 sq. ft)

Frank Harris & Co. Bloomsbury and Kings Cross
81 Marchmont Street,
London, WC1N 1AL
020 7405 4444
bloomsburysales@frankharris.co.uk

Energy Rating: . We aim to make our particulars both accurate and reliable. However they are not guaranteed; nor do they form part of an offer or contract. If you require clarification on any points then please contact us, especially if you're traveling some distance to view. Please note that appliances and heating systems have not been tested and therefore no warranties can be given as to their good working order.

