



3 Lavender Terrace, Ewelme, Wallingford, Oxon, OX10 6GR

£1,950 Per Month - 26th June 2026.

- Three-bedroom end-terrace cottage
- LPG gas central heating
- Council Tax Band D
- Wood-burning stove
- Large boarded loft space
- EPC Rating D
- Enclosed rear garden with outdoor home office
- Designated parking for two cars

3 Lavender Terrace, Wallingford OX10 6GR

Three-bedroom end-terrace cottage conveniently located between Wallingford and Henley-on-Thames, with easy access to the M4 and M40 motorways and on a bus route. The property comprises of a sitting room with a wood-burning stove, a kitchen/breakfast room fitted with a hob, electric oven, washing machine, fridge/freezer, and slim-line dishwasher, as well as a downstairs cloakroom. There are three bedrooms, a family bathroom with a shower over the bath,. A large boarded loft space. Outside, the property includes an enclosed rear garden with outdoor home office, (insulated with broadband, electrics and TV point). Designated parking for two cars. LPG gas central heating. EPC D, Council Tax Band D.

The Ofcom Broadband Checker states there is:

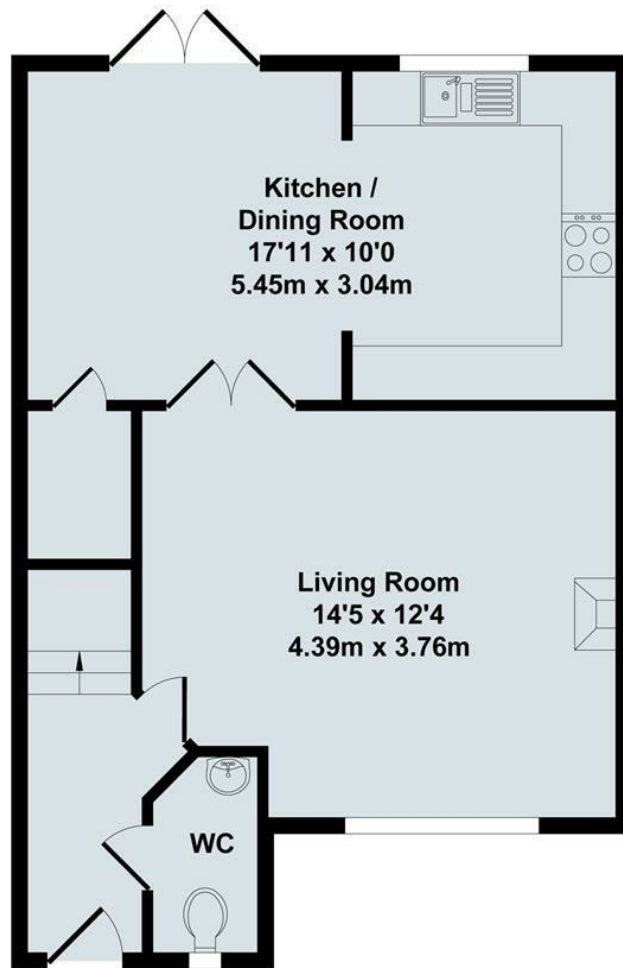
- Standard broadband has download speeds of 14Mbps.

When an application is agreed a holding deposit will be required of a maximum of one weeks rent.

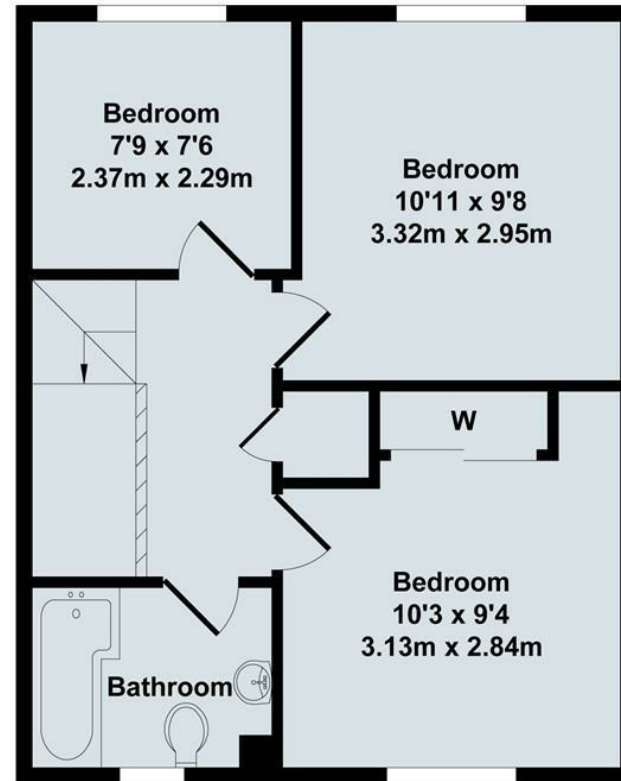


Council Tax Band: D





Ground Floor



First Floor




Total Approx. Floor Area 838 Sq.Ft. (77.90 Sq.M.)

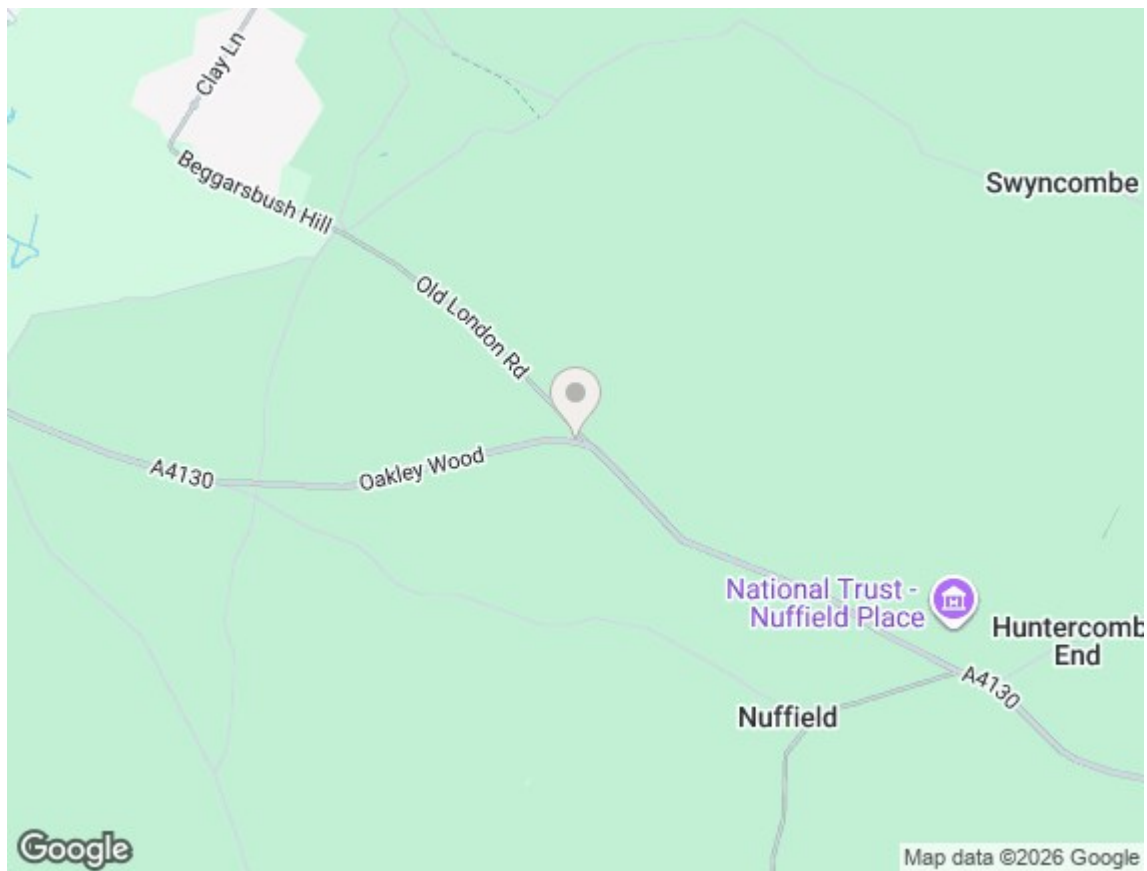
All items illustrated on this plan are included in the "Total Approx Floor Area"





Energy Efficiency Rating

	Current	Potential
Very energy efficient - lower running costs		
(92 plus) A		96
(81-91) B		
(69-80) C		
(55-68) D	62	
(39-54) E		
(21-38) F		
(1-20) G		
Not energy efficient - higher running costs		
England & Wales	EU Directive 2002/91/EC	



Directions

Viewings

Viewings by arrangement only. Call 01235 514267 to make an appointment.

Council Tax Band

D