



Penn Road, N7

£750,000

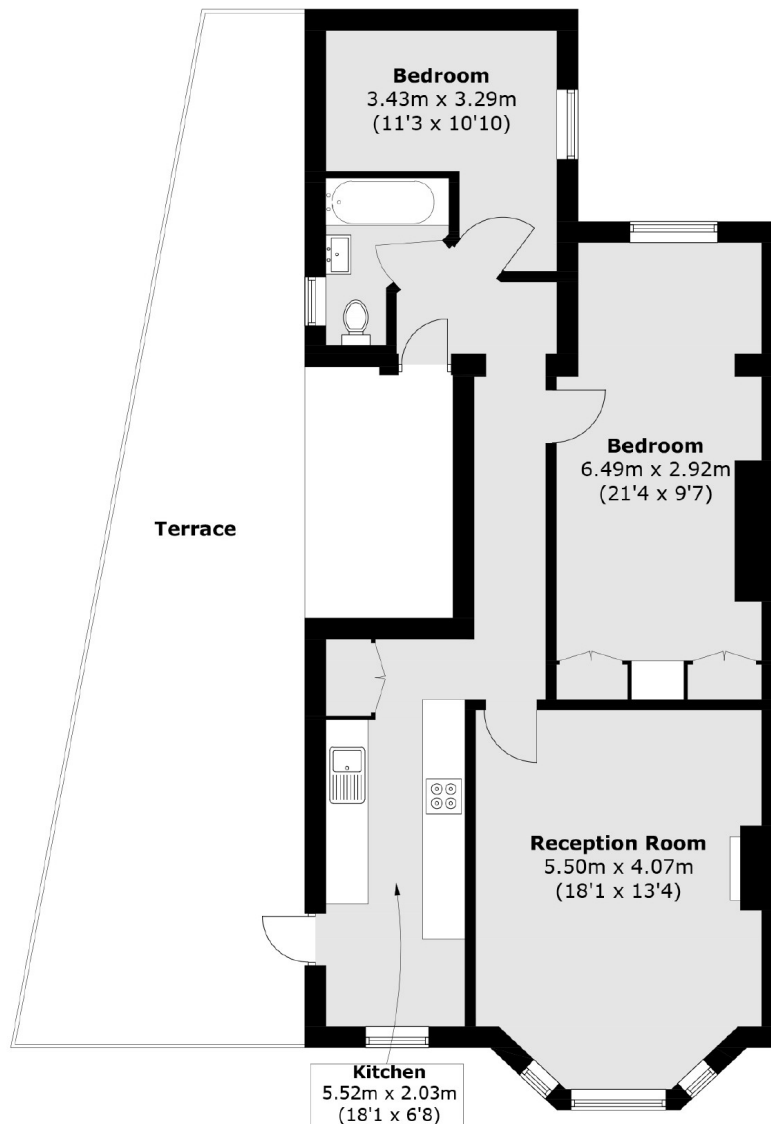
A lovely two bedroom apartment on the second floor of a Victorian house offering an abundance of natural light, a large reception room and a separate kitchen that leads out to a large, private terrace.

Penn Road is a one way tree-lined street within the sought after Hillmarton Conservation Area. Both Caledonian Road and Holloway Road underground stations are within half a mile.

Features

- Two Bedrooms
- Separate Kitchen
- Private Terrace
- Great Transport Links
- Victorian Conversion
- Chain Free

Penn Road, London, N7



First Floor

Total area (approx.): 72.9 sq. m (784.7 sq. ft)
Terrace area : 40.7 sq. m (438.1 sq. ft)