



**Connells**

Farmers Close  
Witney



### Property Description

A well-presented three bedroom family home situated within the popular Farmers Close area of Witney, offering balanced accommodation across two floors along with the benefit of a separate garage. The property is approached via an entrance hall which provides access to the main living areas and staircase to the first floor.

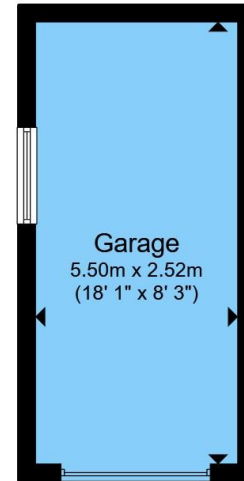
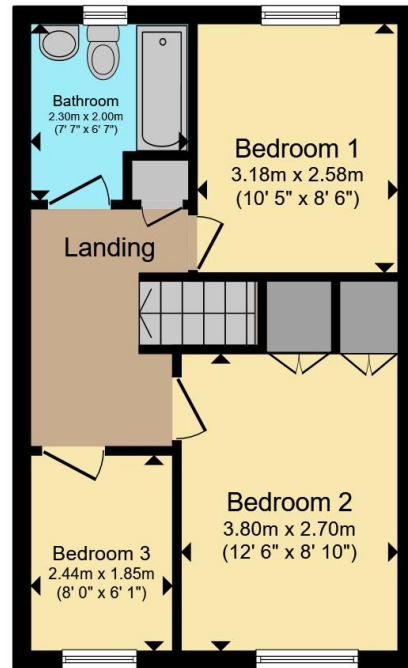
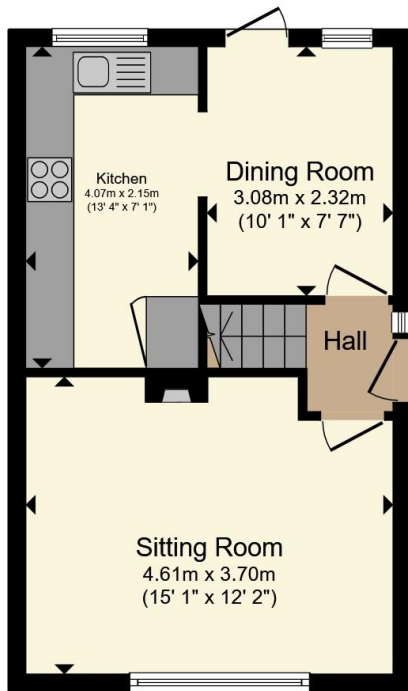
The ground floor features a generous sitting room which is the full width of the property providing an excellent space for relaxing and entertaining, with plenty of natural light from the rear aspect. To the rear of the property there is a separate dining room, conveniently positioned adjacent to the fitted kitchen, which offers a practical layout with ample worktop space and direct access. The overall arrangement lends itself well to both modern family living and formal dining.

Upstairs, the first floor comprises three bedrooms, including a spacious principal bedroom and a well-proportioned second bedroom, both suitable for double beds. The third bedroom provides a versatile space ideal for use as a home office, nursery, or guest room. A family bathroom serves all bedrooms and is accessed from the central landing, with additional built-in storage completing the upper floor.

Externally, the property benefits from a garage measuring approximately 5.50m x 2.52m, providing secure parking or additional storage. Located in a quiet residential setting, the home is well placed for access to local amenities, schools, and Witney town centre.







Total floor area 85.1 m<sup>2</sup> (916 sq.ft.) approx

This floor plan is for illustrative purposes only. It is not drawn to scale. Any measurements, floor areas (including any total floor area), openings and orientation are approximate. No details are guaranteed, they cannot be relied upon for any purpose and they do not form part of any agreement. No liability is taken for any error, omission or misstatement. A party must rely upon its own inspection(s). Powered by www.propertybox.io



To view this property please contact Connells on

**T 01993 778 281**  
**E witney@connells.co.uk**

13 Corn Street  
WITNEY OX28 6DB

EPC Rating: Council Tax  
Awaited Band: C

**view this property online [connells.co.uk/Property/WNY305932](http://connells.co.uk/Property/WNY305932)**

Tenure: Freehold



1. MONEY LAUNDERING REGULATIONS Intending purchasers will be asked to produce identification documentation at a later stage and we would ask for your co-operation in order that there will be no delay in agreeing the sale. 2. These particulars do not constitute part or all of an offer or contract. 3. The measurements indicated are supplied for guidance only and as such must be considered incorrect. Potential buyers are advised to recheck measurements before committing to any expense. 4. We have not tested any apparatus, equipment, fixtures, fittings or services and it is in the buyers interest to check the working condition of any appliances.

Connells Residential is registered in England and Wales under company number 1489613, Registered Office is Cumbria House, 16-20 Hockliffe Street, Leighton Buzzard, Bedfordshire, LU7 1GN. VAT Registration Number is 500 2481 05.

**See all our properties at [www.connells.co.uk](http://www.connells.co.uk) | [www.rightmove.co.uk](http://www.rightmove.co.uk) | [www.zoopla.co.uk](http://www.zoopla.co.uk)**

Property Ref: WNY305932 - 0004