

Chalton Street, NW1

£2,300 Per calendar month

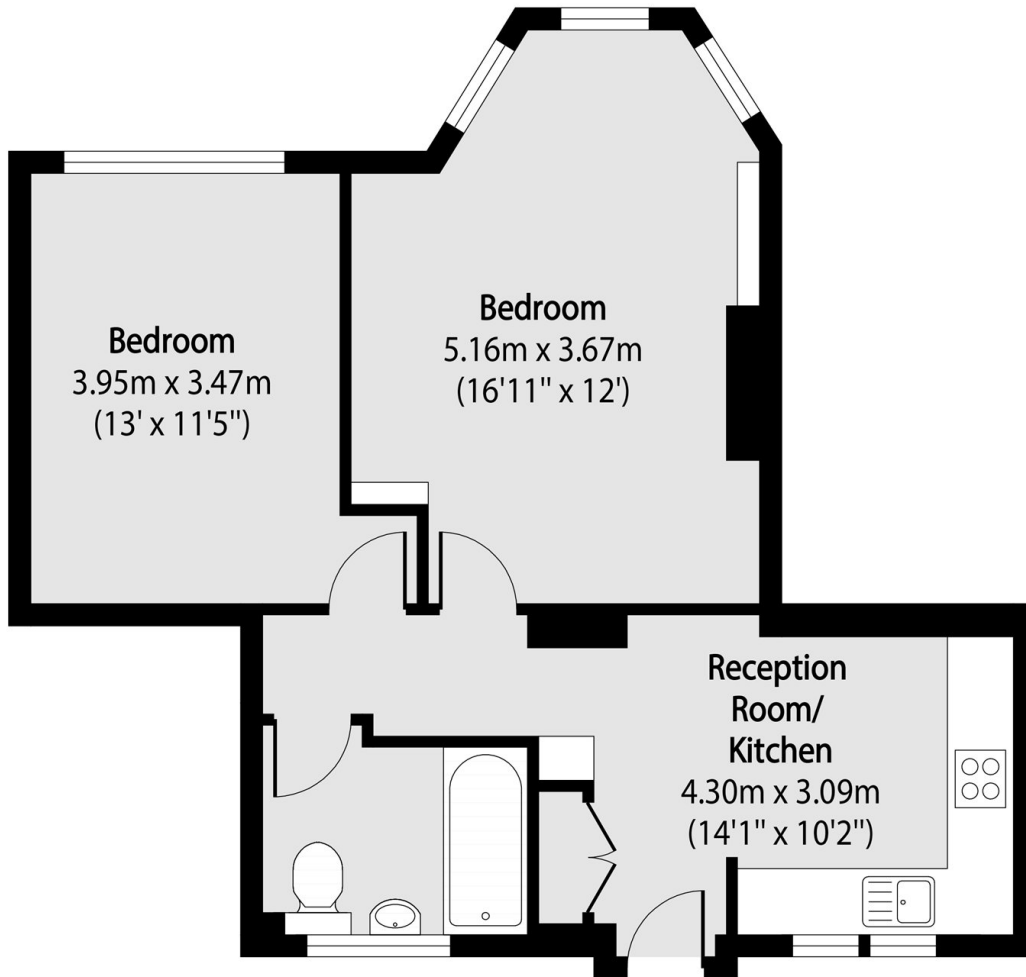
A well-presented two-bedroom flat offering two generously sized double bedrooms. The property benefits from large windows throughout, allowing for plenty of natural light, along with good storage options. The open-plan kitchen and living area provides a practical and comfortable space for both relaxing and entertaining.

Situated on Chalton Street, the property is conveniently located close to local amenities, cafes, and transport links, offering easy access into central London and surrounding areas.

Features

- Prime Location
- Two Bedroom
- Excellent Transport Links
- Good Storage
- Open Plan Kitchen
- Large Windows

Chalton Street,
London, NW1



Total area (approx): 48.37 sq m (521 sq. ft)