



RESIDE — MANCHESTER

3603 Three60 11 Silvercroft Street
New Jackson, Manchester, M15 4ZT

Asking Price £440,000

2 2 1 B

3603 Three60 11 Silvercroft New Jackson, Manchester, M15 4ZT

Two Bedroom Apartment with Parking at Three60, Manchester City Centre.

Reside Manchester are pleased to offer this well presented two-bedroom apartment on the 36th floor of the landmark Three60 development on New Jackson Street, just moments from Deansgate and Manchester's main business, retail and leisure districts.

The property is offered vacant and fully furnished to a high standard, featuring an open plan living/kitchen area, two double bedrooms, two bathrooms and an allocated underground parking space, making it ideal for both owner occupiers and investors.

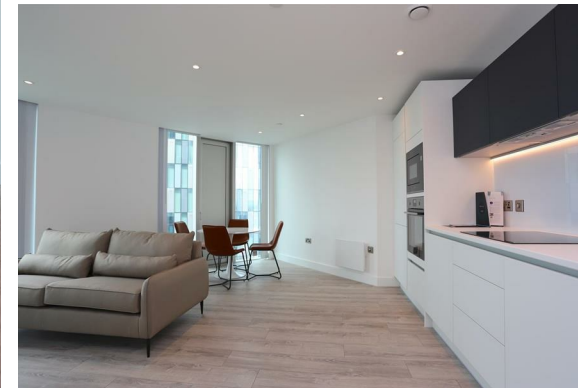
Residents benefit from a premium range of on-site amenities including a gym, spinning studio, residents' lounge and roof terrace.

Amenity Spaces

The gym at Three60 is designed as a high-spec resident fitness space, featuring modern Technogym and Hammer Strength equipment, dedicated strength and cardio areas, and specialist studios including a spin studio with Peloton bikes and a yoga studio. The facilities are designed to feel more like a private health club than a typical apartment gym.

The communal areas are equally impressive, with a stylish residents' lounge providing space to relax or work, co-working areas with private booths, and bookable private dining/meeting suites. There is also a landscaped communal roof terrace with seating areas, offering impressive views across the New Jackson neighbourhood and Manchester skyline.

- Two Double Bedrooms
- Two Bathrooms
- Available Fully Furnished

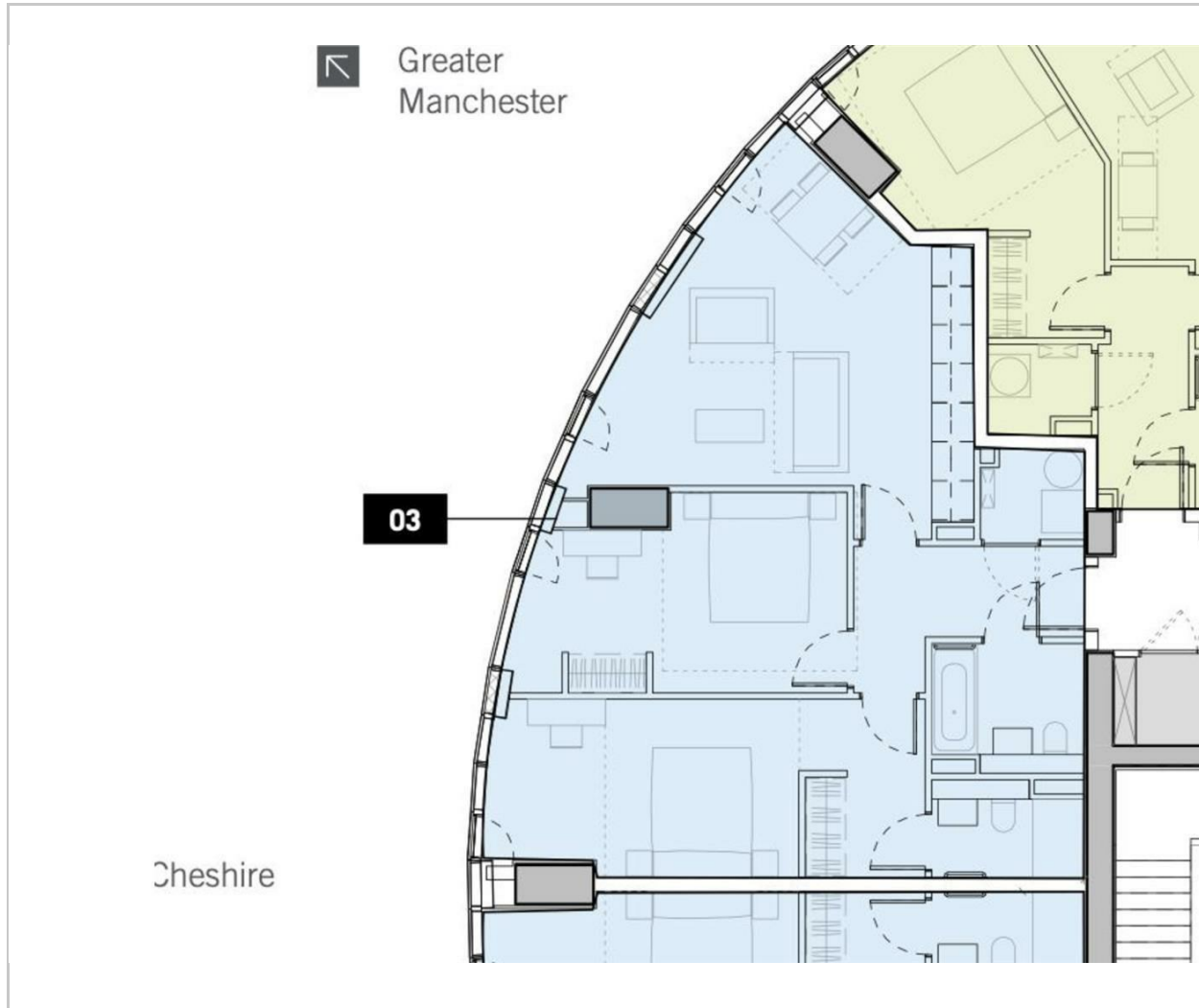




- Allocated Parking Space Included with EV Charge point
- EPC rating B
- Vacant Possession
- Residents' Amenities Including A Gym, Roof Terrace & Lounge
- 24hr Concierge
- 36th Floor
- Central Manchester Location



Floor Plan

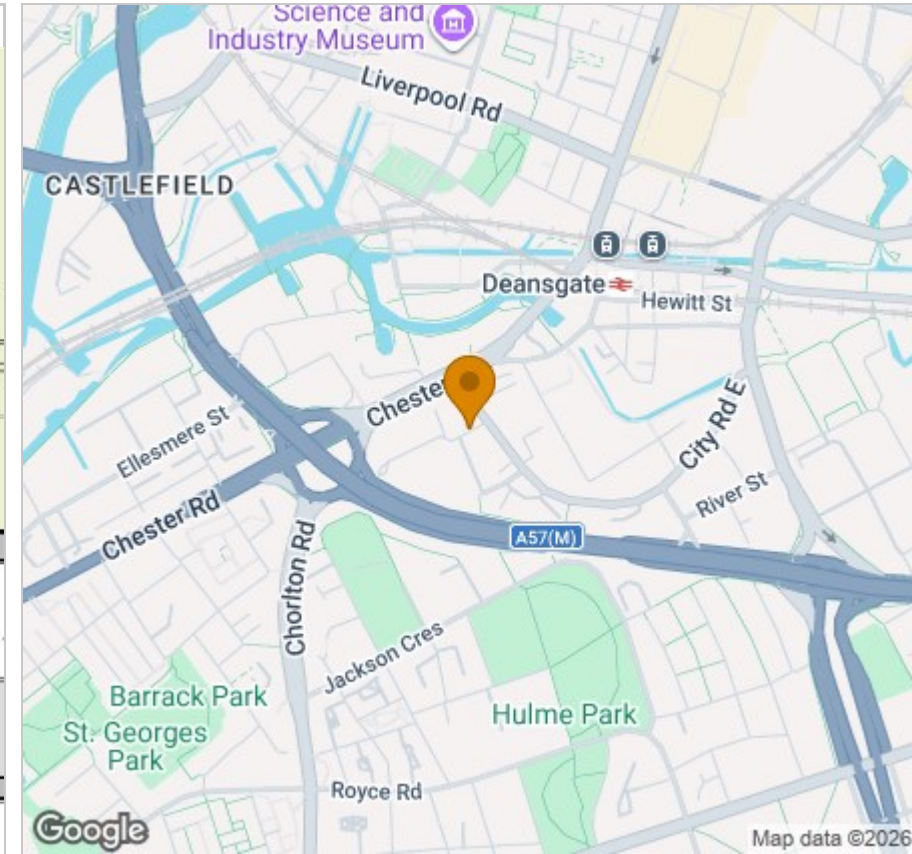


Viewing

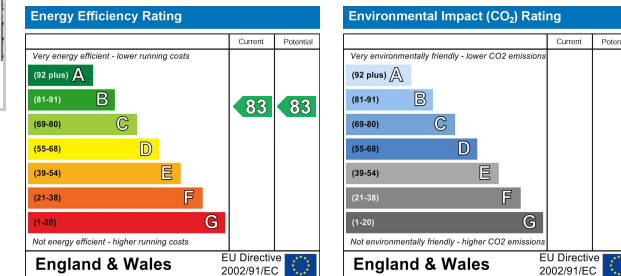
Please contact our Reside Manchester Office on 0161 837 2840 if you wish to arrange a viewing appointment for this property or require further information.

These particulars, whilst believed to be accurate are set out as a general outline only for guidance and do not constitute any part of an offer or contract. Intending purchasers should not rely on them as statements of representation of fact, but must satisfy themselves by inspection or otherwise as to their accuracy. No person in this firm's employment has the authority to make or give any representation or warranty in respect of the property.

Area Map



Energy Efficiency Graph



Upper Ground, 4 Jordan Street, Manchester, Greater Manchester, M15 4PY

Tel: 0161 837 2840 Email: info@residemanchester.com www.reside-property.com