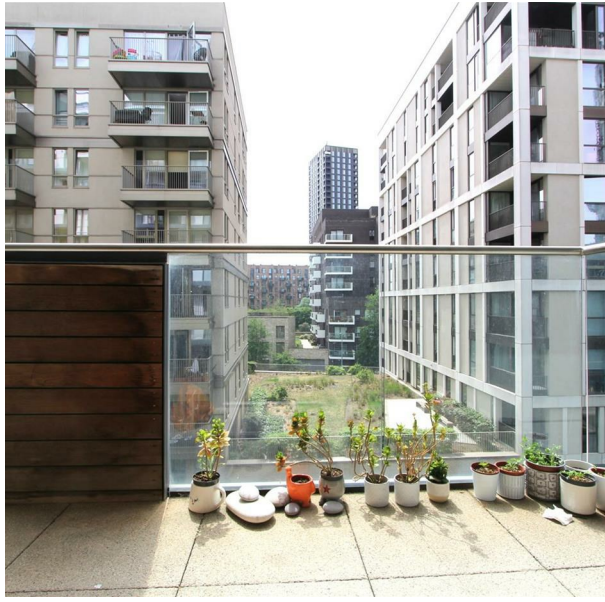


25 Barge Walk, London, SE10 0NB

£250,000

Council Tax Band: B



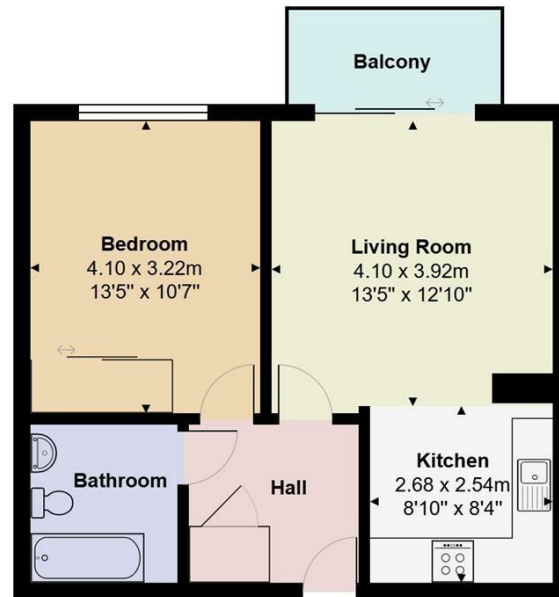
Being sold via Secure Sale online bidding. Terms & Conditions apply. Starting Bid £250,000

This luxurious one-bedroom apartment is situated within a stunning waterside development in the heart of Greenwich Peninsula, moments from the iconic O2 Arena. Designed with modern living in mind, the property features a spacious open-plan reception and high-specification kitchen, a generous double bedroom with fitted wardrobes, a sleek contemporary bathroom, and a private balcony offering an ideal spot to unwind.

Perfectly positioned for connectivity, North Greenwich station (Jubilee Line) is only a short walk away, providing fast links to Canary Wharf, London Bridge, and the West End. The Emirates Cable Car and Thames Clipper offer alternative, scenic routes across the capital. Everyday essentials are close at hand, with Sainsbury's, Aldi, Asda, and Ikea all within easy reach, while the Peninsula's primary school, nursery, and eco-park add to the area's family appeal. The development is surrounded by landscaped open spaces, parks, and playgrounds, creating a calm and welcoming environment.

The O2 Arena sits on your doorstep, offering world-class concerts, sporting events, a wide selection of restaurants, bars, a cinema, bowling, and a wide selection of shops. This is contemporary riverside living at its finest.

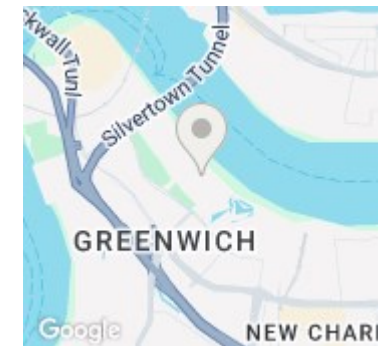
The property is currently tenanted and achieving £1650 PCM



Total Area: 51.0 m² ... 549 ft²
All measurements are approximate and for display purposes only



Open House South East



Energy Efficiency Rating		Current	Potential
Very energy efficient - lower running costs			
(92 plus)	A		
(81-91)	B	82	
(69-80)	C		
(55-68)	D		
(39-54)	E		
(21-38)	F		
(1-20)	G		
Not energy efficient - higher running costs			
England & Wales		EU Directive 2002/91/EC	