



PERIOD
HOMES

Honeywood Cottage, Holloway Road, Heybridge

In Excess of £500,000

Honeywood Cottage, Holloway Road

Heybridge, Maldon

This charming, detached cottage, believed to date back more than 250 years, is a wonderful blend of period character and practical family living.

Council Tax band: E

Tenure: Freehold

EPC Energy Efficiency Rating: D

EPC Environmental Impact Rating: D





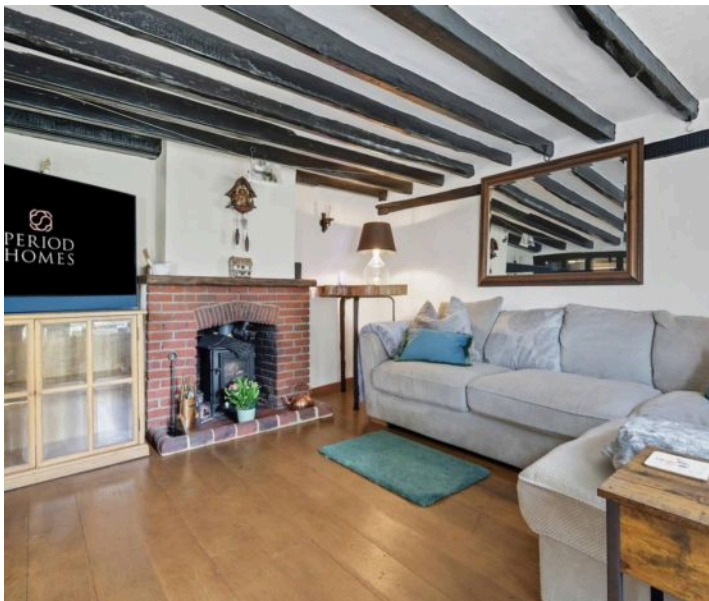
Honeywood Cottage, Holloway Road

Heybridge, Maldon

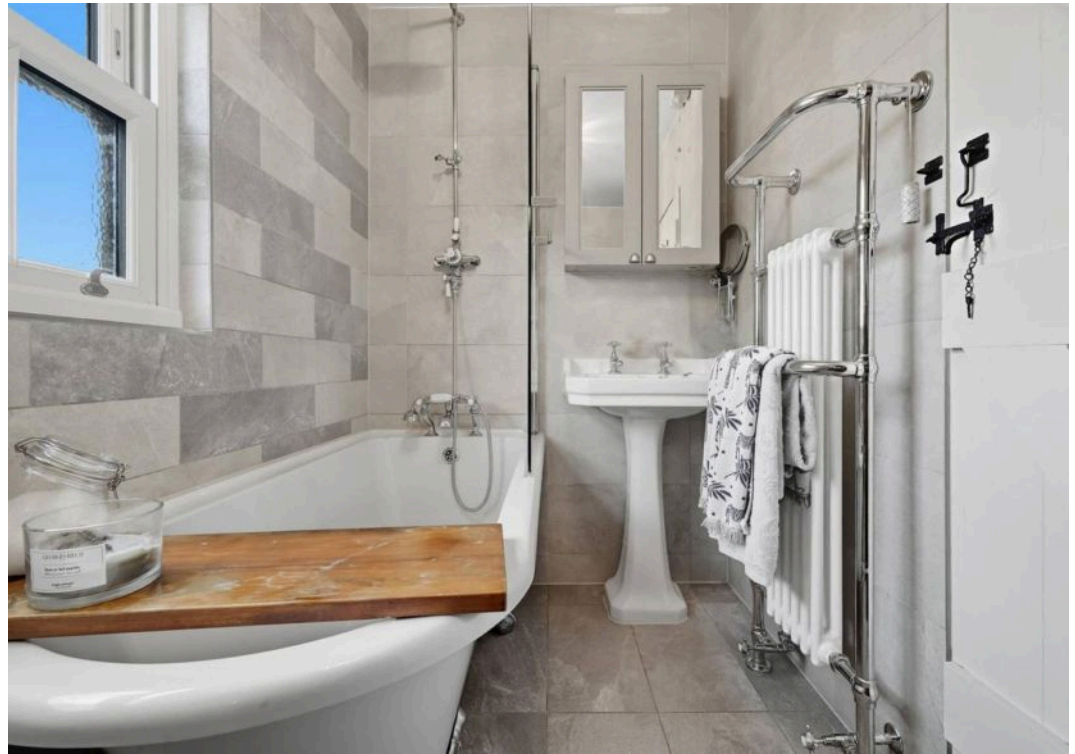
This charming, detached cottage, believed to date back more than 250 years, is a wonderful blend of period character and practical family living. From the welcoming hallway you step into a cosy lounge complete with exposed beams and a log burner, creating the perfect atmosphere on cooler evenings. To the rear, the heart of the home is the open-plan kitchen and dining area with French doors opening onto the garden, making it a fantastic space for entertaining or enjoying relaxed family time. Upstairs, four well-proportioned bedrooms, complemented by a stylish family bathroom.

This wonderful period home is ideally located within walking distance to Heybridge shops and Maldon High Street, offering a variety of local amenities, cafés, and boutiques. Chelmsford City Centre is also within easy reach, providing excellent shopping & leisure facilities plus fast rail connections into London Liverpool Street. The balance of village life and convenient access to larger centres makes this location particularly attractive.

On the ground floor, the spacious hallway leads to a welcoming lounge filled with period features, including timber beams and a log-burning stove. The open-plan kitchen and dining room to the rear offers modern convenience with direct access to the garden, making it an ideal layout for entertaining. Upstairs, the first floor is home to four bedrooms, three of which are generous doubles, plus a single room ideal







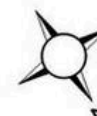


HONEYWOOD COTTAGE

Approx. Gross Internal Area 142.3 Sq M (1532.1 Sq Ft)

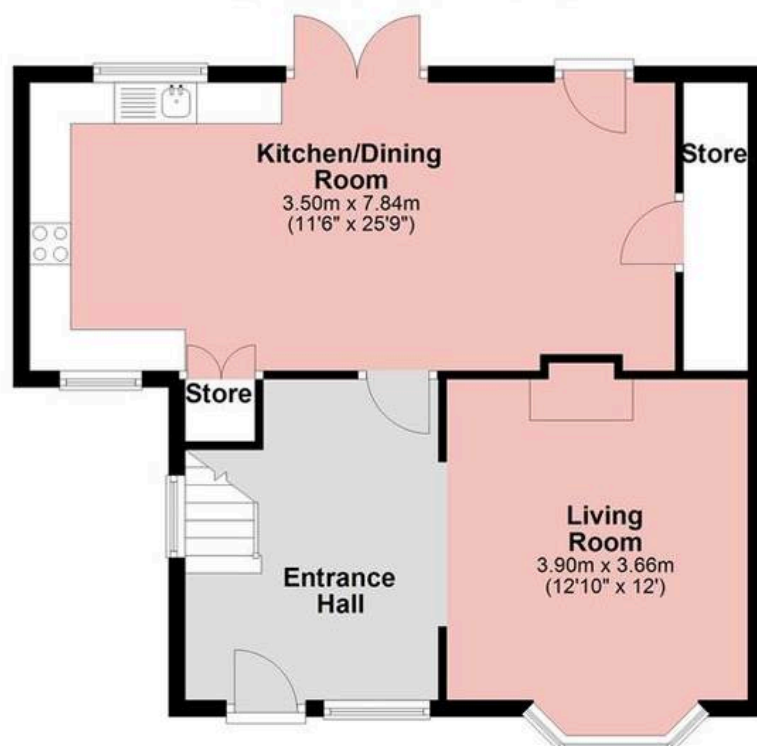


PERIOD
HOMES



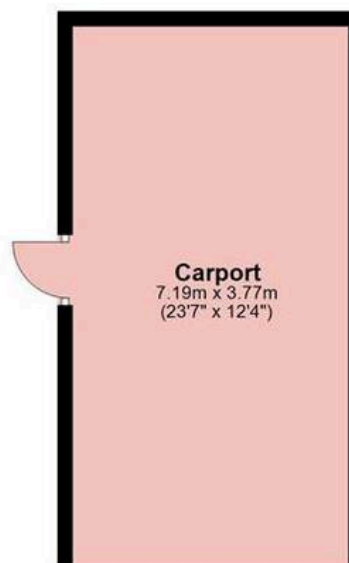
Ground Floor

Approx. 58.2 sq. metres (626.1 sq. feet)



Carport

Approx. 27.1 sq. metres (291.4 sq. feet)



First Floor

Approx. 57.1 sq. metres (614.5 sq. feet)



Measurements are approximate and for illustration purposes only. While we do not doubt the accuracy and completeness, we advise you conduct a careful independent assessment of the property to determine monetary value.

© @modephotouk www.modephoto.co.uk

About Us

From charming cottages to country estates, all our homes have a story to tell. 'Period Homes' is one of a kind, an agency dedicated to the sale of character and period properties across Essex.

If you would like to buy a period home but you have a modern home to sell first, we can assist via our sister company, Walkers, which just so happens to have been voted Britain's Best Estate Agency in the British Property Awards. That way, both elements of your move are in the very best of hands.

Get In Touch



Browse Properties



Contact Us
01245 206000



Our Website
periodhomes.co.uk



Our Address

The Spinney, 121 Main Rd, Danbury,
Chelmsford CM3 4DL



PERIOD
HOMES

Pst... Have you heard of
discreet marketing?

Many people lose out on their dream home to someone in a better position.

Often, it is because they have delayed putting their house on the market, preferring to find somewhere first and then sell.

That is why we have innovated a totally unique and high confidential moving home solution to put you in a competitive position.

Let us find you a buyer without any advertising or pressure and without the neighbours knowing.

Your secret is safe with us...

Get in touch for a
complimentary valuation.

Looking To Sell Or Let Your Home?

Book your free valuation to see how much your home is worth.