



NATAL ROAD, SW16

£1,000,000

- Victorian Terraced House
- Five double bedrooms
- Three bathrooms
- High specification property
- Popular location
- Energy rating: F





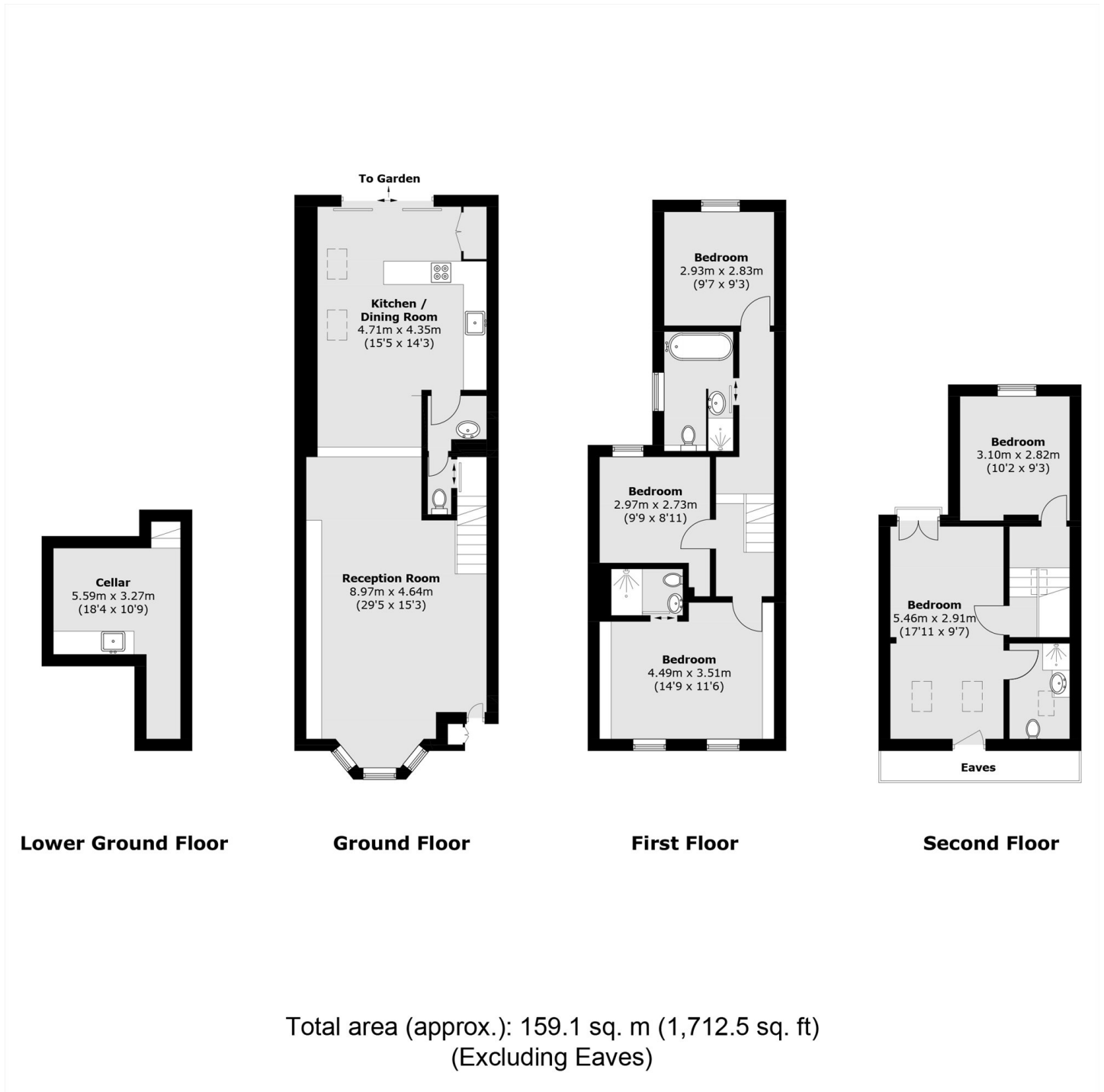
ABOUT THE HOME

A semi-detached five bedroom home finished to an extremely high specification. This immaculate house benefits from being extended into the side return to create a spacious kitchen/diner, as well as in to the loft to add two additional double bedrooms and a second bathroom. There is also an ensuite in the principle bedroom. In addition to the living space, which measures in excess of 1700 square feet, there is also a cellar which the owners have converted into a utility space.

Natal Road is well located for all the amenities of the area including many pubs, independent coffee shops, restaurants, several large supermarkets, leisure centre and the Common. Transport links are also excellent, with Streatham and Streatham Common offering quick links in to Victoria, London Bridge and the Thameslink service.







JACKSONS STREATHAM

1-3 De Montfort Parade,
 Streatham High Road,
 Sales: 020 8487 3179
 Lettings: 020 8487 3180

Energy Rating: F We aim to make our particulars both accurate and reliable. However they are not guaranteed; nor do they form part of an offer or contract. If you require clarification on any points then please contact us, especially if you're traveling some distance to view. Please note that appliances and heating systems have not been tested and therefore no warranties can be given as to their good working order.