

Property ref: 167690

Verto, Reading, RG1 3FR

£1,800 PCM

HASLAM'S
Lettings



A well presented, fully furnished two bedroom apartment located in the sought after Verto building. This luxury apartment is located in Reading town centre, just a short walk from Reading train station. The apartment comprises of open plan fully integrated kitchen / lounge area with door leadings to balcony, two double bedrooms and modern bathroom. Reading Borough Council tax band D.

Broadband/Mobile Info: Connections available. For an indication of specific speeds and supply of Broadband and Mobile, we advise applicants go to the Ofcom website Broadband and Mobile Coverage Checker.

Available 24/07/2026

*Fees For Assured Shorthold Tenancies: when you rent a property from us you will be required to pay a sum equivalent to one weeks' rent for a holding deposit. Upon successful application, this amount will be off set against your first months' rent. You will also be required to pay a security deposit equivalent to 5 weeks' rent which will be held and protected in line with Deposit legislation. For more information about our fees please visit: www.haslams.net
Fees for all other tenancies (Non Housing Act Tenancies / Company Lets): when you rent a property from us we will charge you a one-off fee per property. This charge is the equivalent of 15 days of the monthly rental charge (+VAT) with a minimum fee of £450 (inc.VAT) up to a maximum of £650 (inc.VAT). Other fees may apply depending on your circumstances.

- Two double bedrooms
- Open plan kitchen/living area
- Private balcony; Residents gym on site
- EPC rating B; Fully furnished
- No parking; Electric heating
- Managed by HASLAM'S

0118 960 1055

lettings@haslams.net www.haslams.net

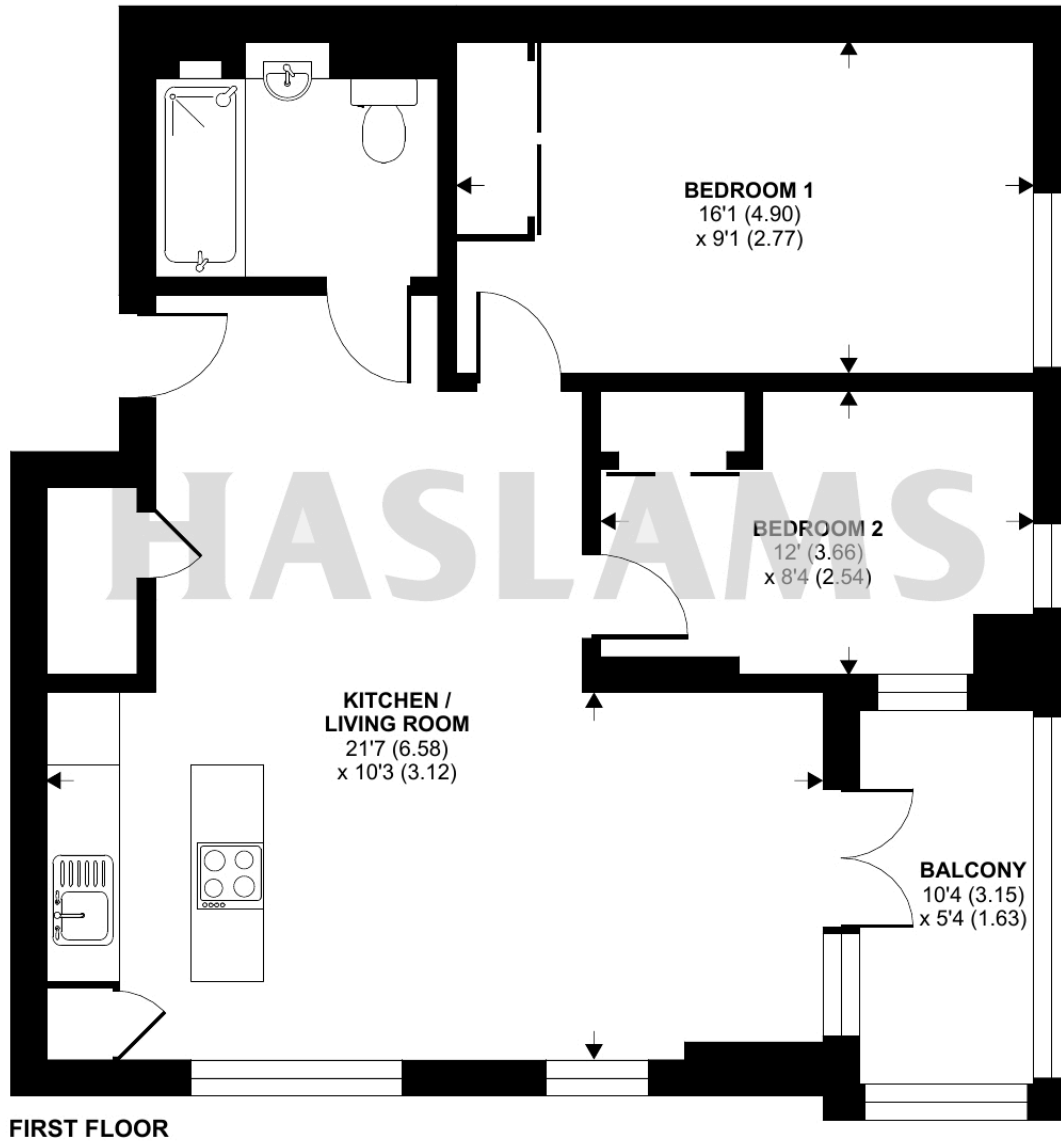
Haslams Estate Agents Ltd, 159 Friar Street, Reading, Berkshire, RG1 1HE



Kings Road, Reading, RG1

Approximate Area = 670 sq ft / 62.2 sq m

For identification only - Not to scale



 Floor plan produced in accordance with RICS Property Measurement 2nd Edition, Incorporating International Property Measurement Standards (IPMS2 Residential). © nchecon 2024. Produced for Haslams. REF: 1217517