



Firbank Brighton Road  
Busbridge Godalming Surrey GU7 1PW  
Asking Price: £1,000,000 Freehold





- Popular Busbridge Area of Godalming
- Easy Reach of Town Centre & Main Line Station
- Walking Distance of Local Schools
- Sitting Room
- Family room
- Kitchen/Dining Room
- Utility Room & Cloakroom
- Four Double Bedrooms & Two Bathrooms
- Off Road Parking for Several Cars
- Secluded South Facing Rear Garden



A tastefully refurbished four bedroom detached character house offering 1,851sqft of spacious and adaptable accommodation ideally suited to family life. The house occupies an enviable elevated location set back from the Brighton Road in the popular Busbridge area of Godalming and is with walking distance of local schools and within half a mile of the Town Centre.











Main Line Station – 0.9 miles (Waterloo approx. 45 mins)

Godalming Town Centre – 0.5 miles

Busbridge Infant School – 0.7 miles Busbridge Junior School – 0.3 miles

Secondary School – 1.8 miles Doctors – 1.4 miles Dentist – 0.5 miles

A3 – 3.1 miles M25 – 15.9 miles M3 – 14.9 miles

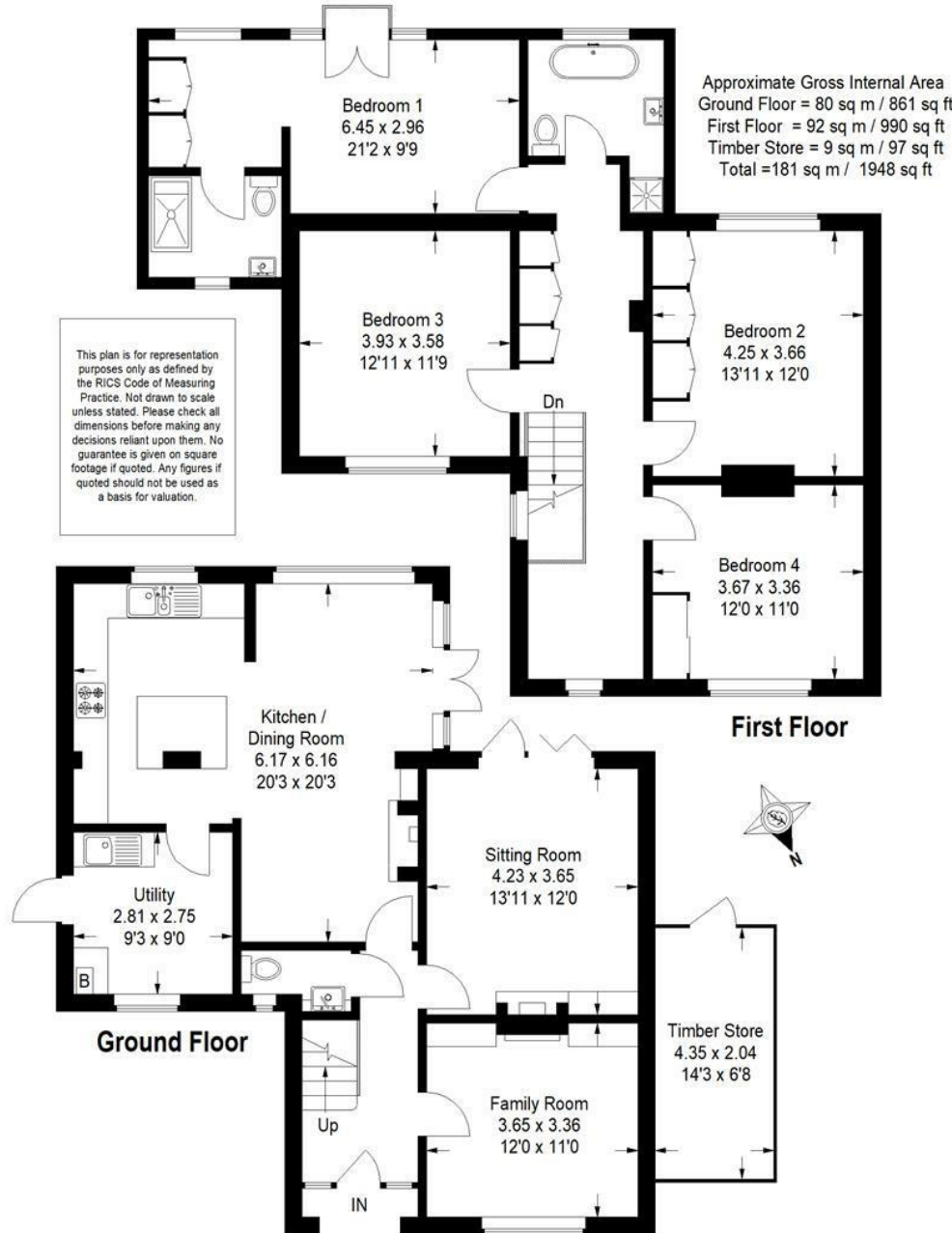
Council Tax Band - DF Payable - £2643.33 (2026/27)

Energy Efficiency Rating D



Directions: From our office in the High Street, proceed down Bridge Street and at the mini roundabout turn right into Flambard Way. Continue to the second set of traffic lights and turn left into Brighton Road. Continue up Brighton Road and Firbank will be found after approximately ½ mile on your right just after Crownpits Green.





This plan is for representation purposes only as defined by the RICS Code of Measuring Practice. Not drawn to scale unless stated. Please check all dimensions before making any decisions reliant upon them. No guarantee is given on square footage if quoted. Any figures if quoted should not be used as a basis for valuation.



**Emery & Orchard**  
ESTATE AGENTS

01483 419 300

20 High Street  
Godalming  
Surrey  
GU7 1EB

email:office@emery-orchard.co.uk

Note: These details are intended as a guide only and whilst believed to be correct are not guaranteed and they do not form part of any contract. We would inform prospective purchasers that we have not tested any equipment, appliances, fixtures, fittings or services. Any items not referred to in these particulars are excluded from the sale unless separately agreed. The distance to services & schools are approximate and given as a guide only. Prospective purchasers must check the admission policy for any school mentioned as these may vary.

