



## Marsh Wall, E14

£553 Per week

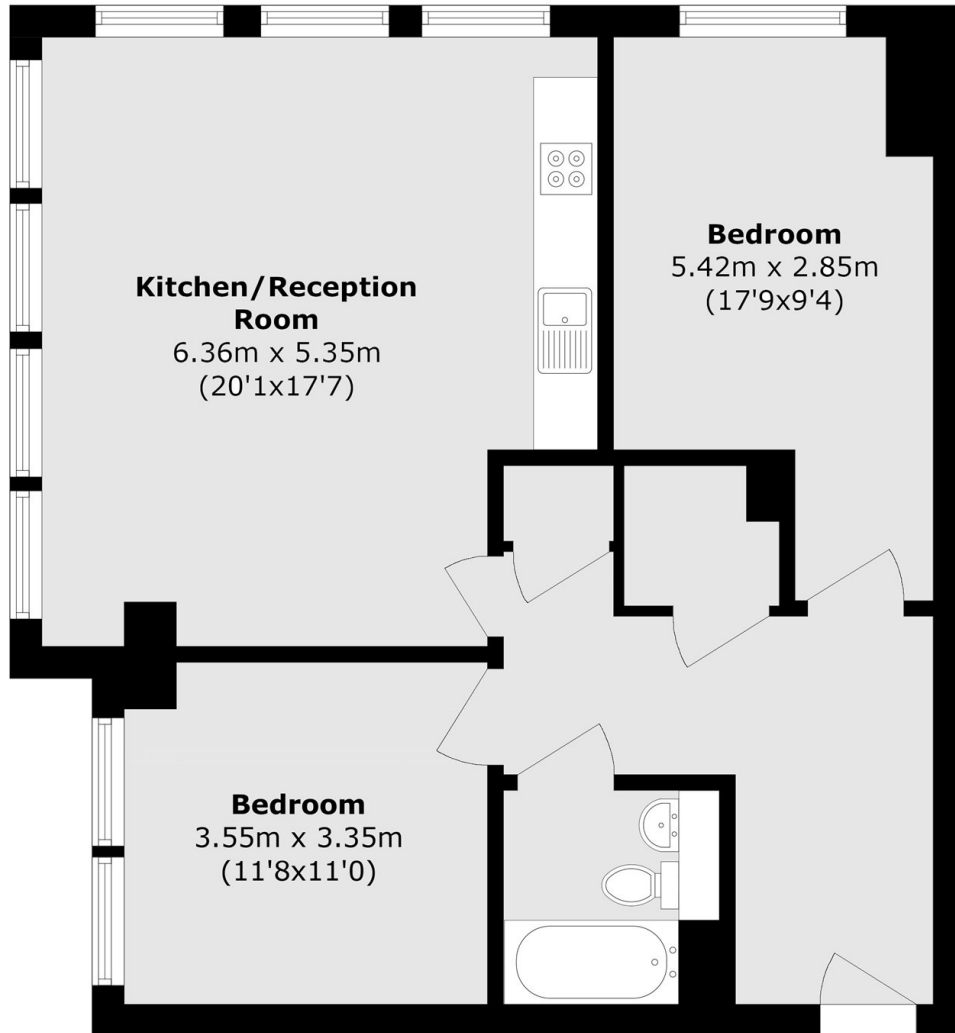
A modern two-bedroom apartment in the heart of Canary Wharf, comprising a large open-plan reception and two double bedrooms. The property has been recently refurbished and is offered furnished.

Located in the heart of Canary Wharf, with excellent access to the Jubilee Line.

### Features

- Two Double Bedrooms
- Furnished
- Large Space
- Ample Storage
- Great location
- Newly Refurbished

# Marsh Wall, London, E14



Total area (approx.): 72.9 sq. m (784.6 sq. ft)