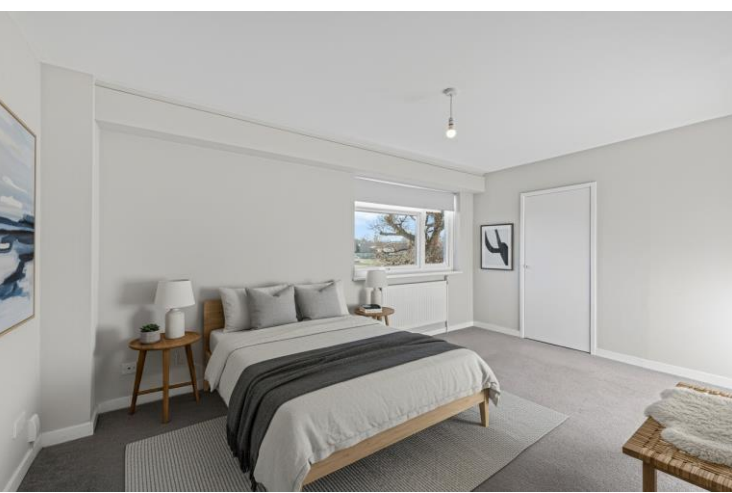




Carisbrooke House  
Courtlands, TW10









Stunning Two Double Bedroom Apartment with Spectacular Views in Prestigious Courtlands Development. Nestled within the highly sought-after Courtlands development, this exceptional two double bedroom apartment offers a unique blend of space, luxury, and tranquillity. Situated on the third floor, the property benefits from far-reaching views over pristine sports fields and the expansive greenery of Richmond Park, creating a serene and picturesque setting.

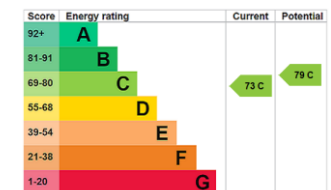
Offered for sale with no onward chain and vacant possession, this immaculate residence also comes with a share of freehold, providing ultimate peace of mind and ownership. The apartment is easily accessible via a lift, ensuring effortless convenience, while the large internal garage with an electronic door and roller shutters offers secure and private parking. Upon entering, you are greeted by a wide, welcoming entrance hallway, immediately evoking a sense of space and sophistication. Both generously proportioned double bedrooms feature built-in wardrobes, providing an abundance of storage while maintaining the apartment's sleek, contemporary design. The luxurious bathroom is fitted with both a bath and a separate shower, ensuring that you can unwind in ultimate comfort and style.

The heart of the home is the expansive semi-open plan kitchen and reception room, which spans the full width of the apartment. This bright and airy living space enjoys direct access to a spectacular south-facing balcony, the perfect spot to entertain guests or simply enjoy the peaceful, panoramic views.

With **North Sheen Station** just 0.4 miles away and **Richmond town centre** nearby, this location also benefits from proximity to top-rated schools like Marshgate and Holy Trinity. An exceptional residence offering unparalleled comfort and style.

- Secure Private Garage
- Lift
- No Onward Chain
- Two Double Bedrooms
- Large Balcony

Asking Price £680,000



**Tenure:** Share of Freehold  
**Service Charge:** £5826.10  
**Ground Rent:** £0  
**Local Authority:** London Borough of Richmond upon Thames  
**Council Tax Band:** D

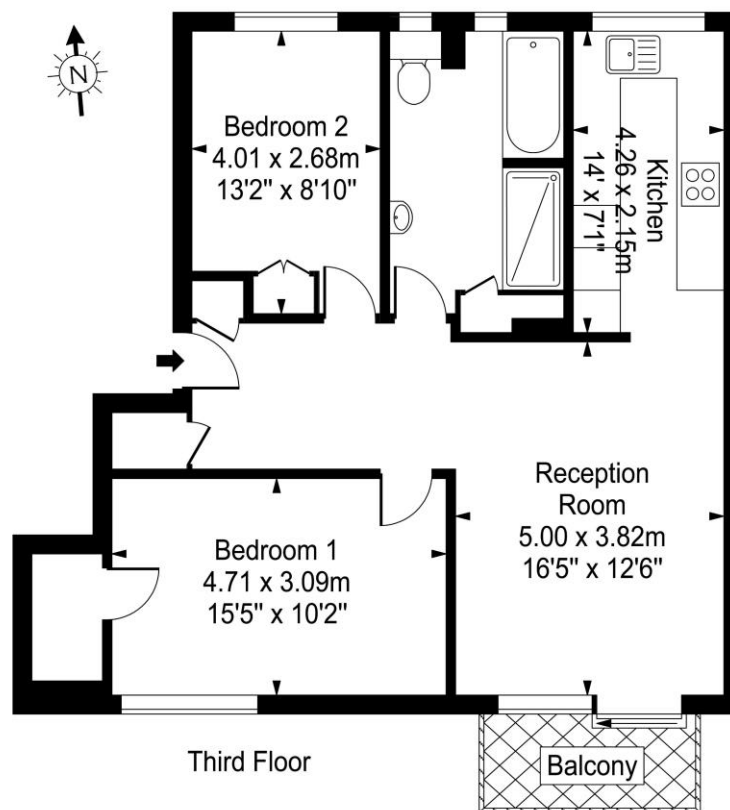
**Chestertons East Sheen Sales**

254A Upper Richmond Road West  
 East Sheen  
 London  
 SW14 8AG  
 sheen@chestertons.co.uk  
 020 8104 0580

# Carisbrooke House

Approx. Gross Internal Area

77 Sq M - 833 Sq Ft



Every attempt is made to assure accuracy, however  
measurements are approximate and for illustrative purposes only. Not to scale.  
Floor plan by [www.frameworkphotos.co.uk](http://www.frameworkphotos.co.uk)

Chesterton UK Services Limited trading as Chestertons for themselves and for the vendor of this property whose agents they are, give notice that (i) these particulars do not constitute any part of an offer or contract, (ii) all statements contained within these particulars are made without responsibility on the part of Chestertons or the vendor, (iii) whilst made in good faith, none of the statements contained within these particulars are to be relied upon as a statement or representation of fact, (iv) any intending purchasers must satisfy themselves by inspection or otherwise as to the correctness of each of the statements contained within these particulars, (v) the vendor does not make or give either Chestertons or any person in their employment any authority to make or give representation or warranty whatsoever in relation to this property. Wide angle lenses may be used. ©Copyright Chestertons | Chesterton UK Services Limited | Registered Office 40 Connaught Street, Hyde Park, London W2 2AB Registered Company Number 05334580.



This paper is  
100% recyclable