

Plot 2, Newtown, Offenham, Evesham, Worcestershire, WR11 8RZ

From £385,000

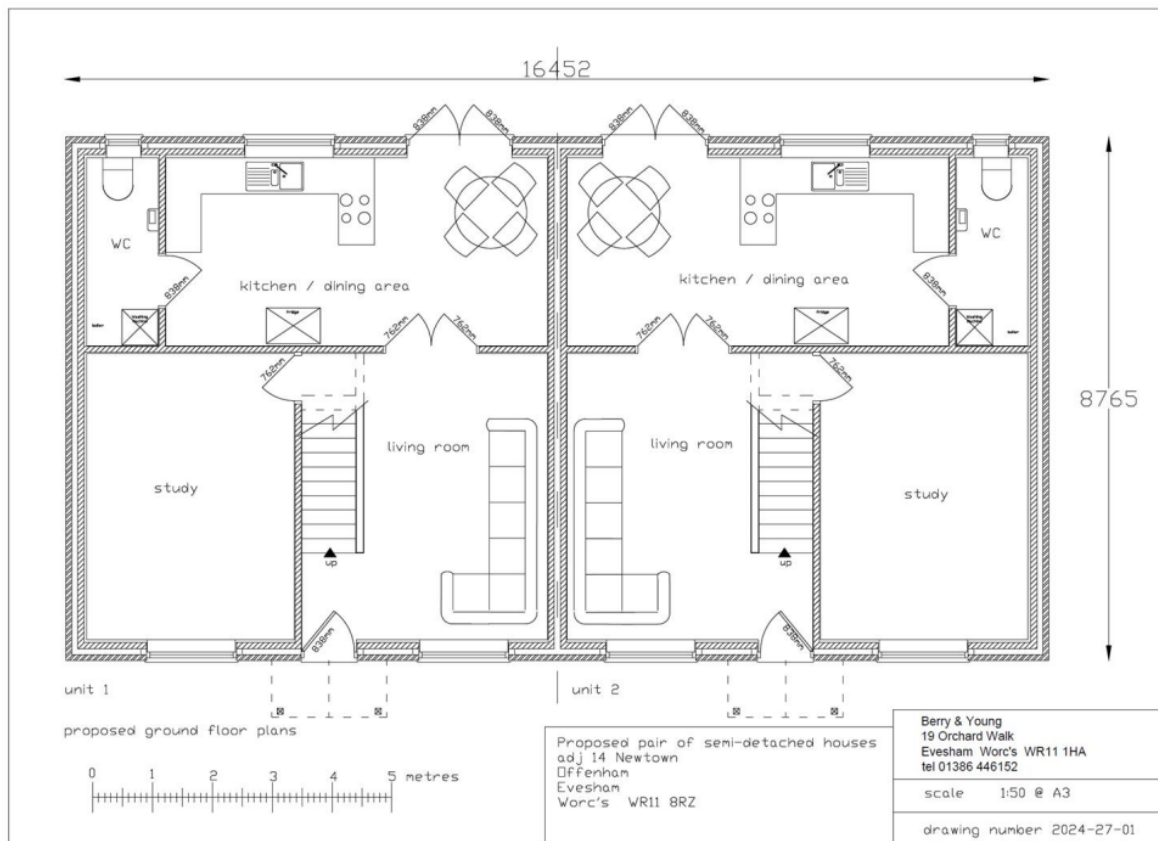
3 2 2



3 Union Road, Shirley, Solihull B90 3BT

sales • new homes • land • commercial • mortgages • auction

- Brand New Spacious Three Bedroom Semi Detached Home
- Open Plan Fully Equipped Kitchen with Open Plan Dining Area
- Air Source Heat Pump For Energy Efficiency
- Underfloor Heating and Double Glazing.
- Off Road Parking For Two Vehicles
- Purchase Off-Plan With The Opportunity To Personalise Internal Finishes
- Principle Bedroom With En-Suite Shower Room Off
- Excellent transport links to Evesham, Worcester, Stratford-upon-Avon, and Cheltenham.
- Two Reception Rooms
- Local Amenities and Countryside Walks Nearby/Semi Rural Location



A stunning spacious 3-bedroom semi-detached home in the sought-after village of Offenham, Evesham. An energy efficient home supplied with an air source heat pump.

Designed with modern family living in mind, this property offers a bright open plan kitchen/diner/lounge for everyday life and entertaining, complemented by a separate lounge for added comfort and a quiet study space. Upstairs, a principle bedroom with ensuite, a stylish family bathroom,

and two further bedrooms provide generous accommodation. With a downstairs W.C. private garden and offroad parking for 2 cars. Underfloor heating to the ground floor and central heating radiators to the first floor. Double glazing throughout.

This home combines comfort, practicality, and contemporary style in a desirable Worcestershire setting.